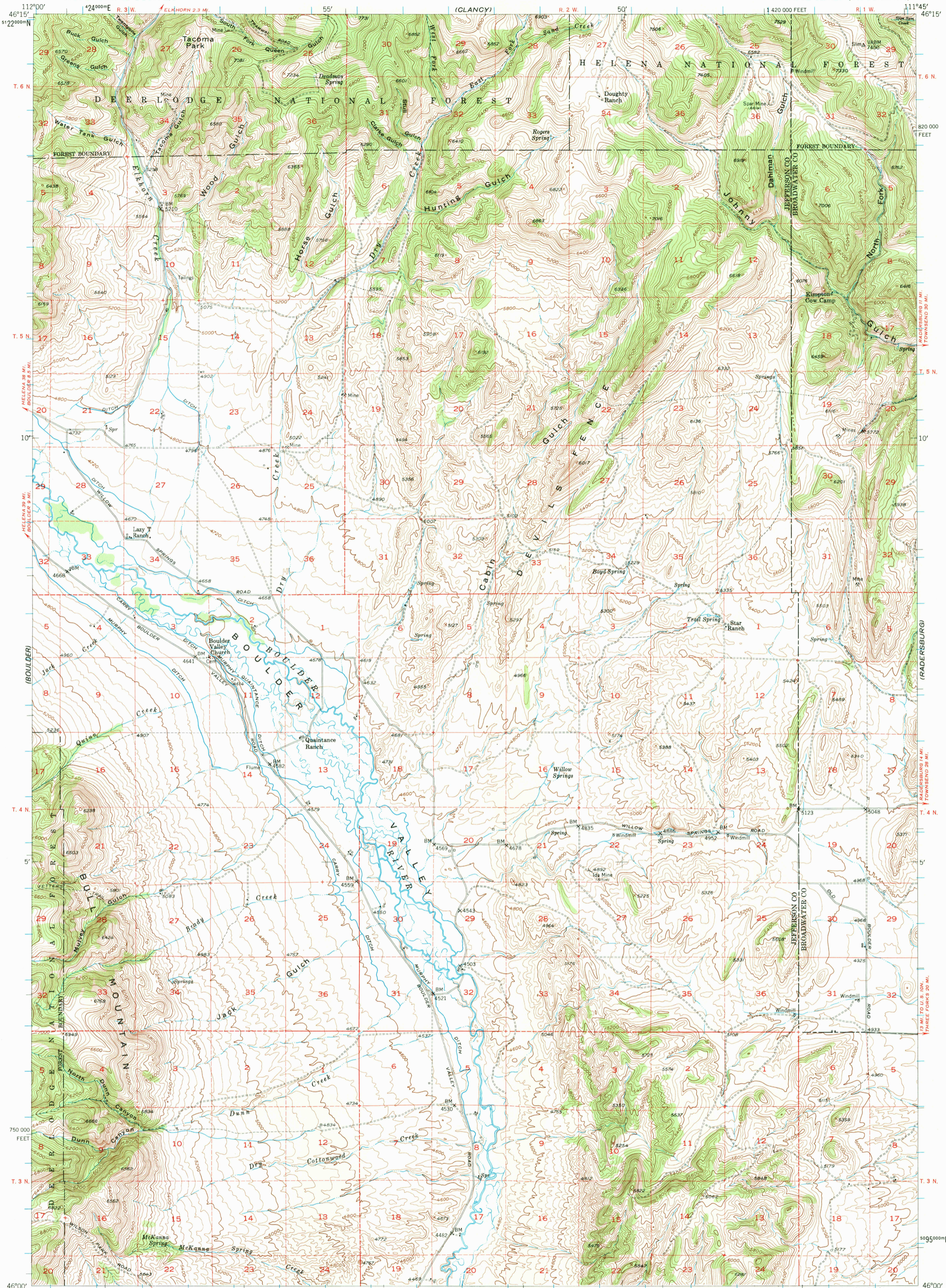


JEFFERSON CITY

UNITED STATES  
DEPARTMENT OF THE INTERIOR  
GEOLOGICAL SURVEY

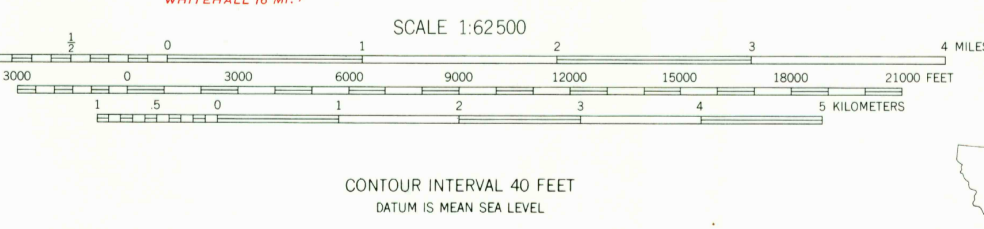
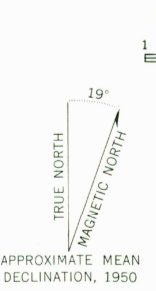
DEVILS FENCE QUADRANGLE  
MONTANA  
15 MINUTE SERIES (TOPOGRAPHIC)

(TOWNSEND)



COLLON 1:250,000

Stereo compilation by Fairchild Aerial Surveys, Inc. for the Bureau of Reclamation. Field examination and publication by the Geological Survey as part of the Department of the Interior program for the development of the Missouri River Basin Control by USGS and USC&GS. Topography from aerial photographs by stereoplanograph methods. Aerial photographs taken 1947. Field check 1950. Polyconic projection. 1927 North American datum 10,000-foot grid based on Montana coordinate system, south zone. Dashed land lines indicate approximate locations. All mines unless otherwise indicated are inactive. 1000-meter Universal Transverse Mercator grid ticks, zone 12, shown in blue.



ROAD CLASSIFICATION

Heavy-duty	4 LANE 6 LANE	Light-duty
Medium-duty	4 LANE 6 LANE	Unimproved dirt
U.S. Route		Slate Route

DEVILS FENCE, MONT.  
N4600-W11145/15  
1950

FOR SALE BY U. S. GEOLOGICAL SURVEY, FEDERAL CENTER, DENVER, COLORADO OR WASHINGTON 25, D. C.  
A FOLDER DESCRIBING TOPOGRAPHIC MAPS AND SYMBOLS IS AVAILABLE ON REQUEST

(THREE FORKS)

RETURN TO:  
USGS NMD HISTORICAL MAP ARCHIVES