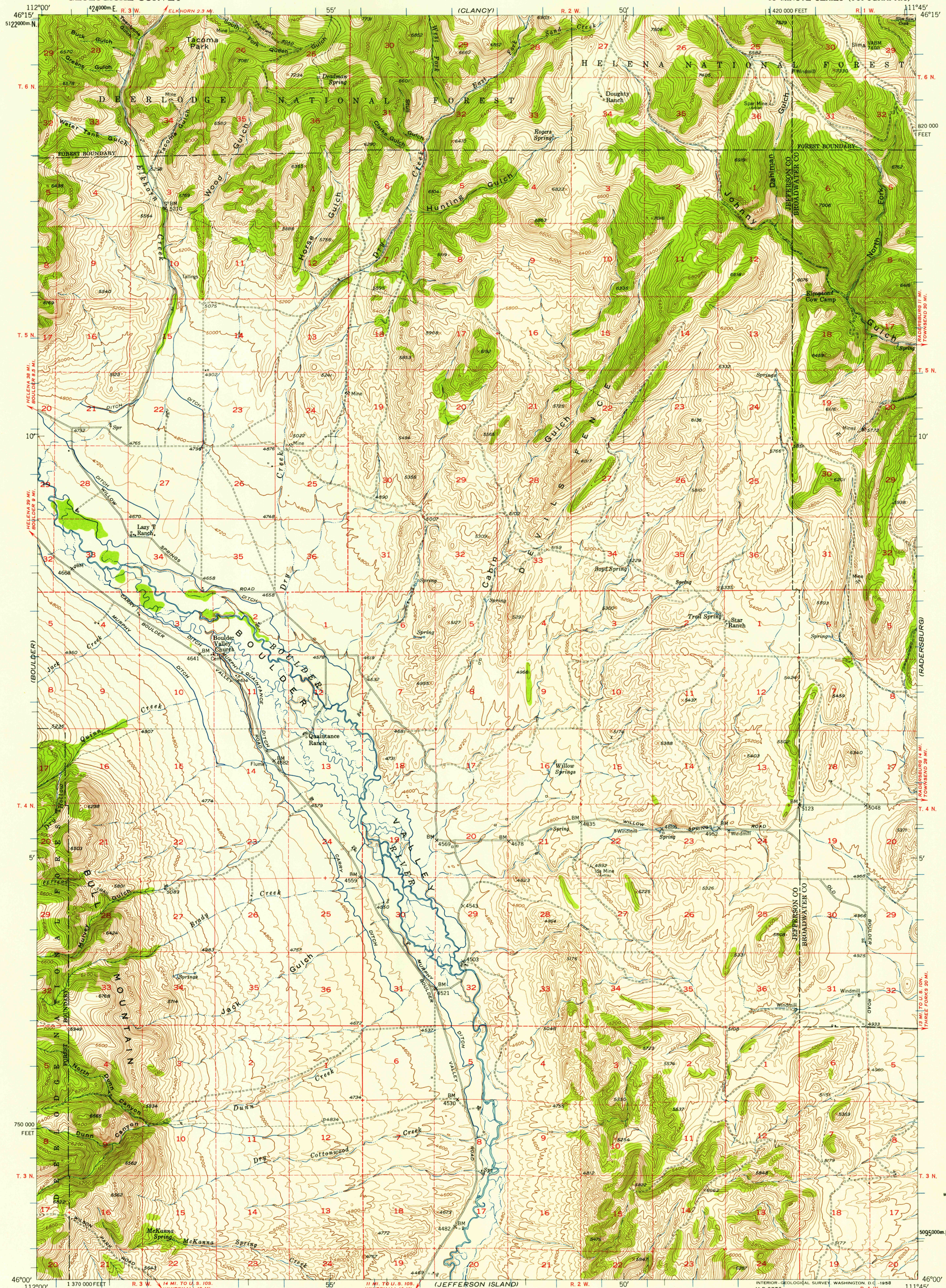


UNITED STATES
DEPARTMENT OF THE INTERIOR
GEOLOGICAL SURVEY

DEVILS FENCE QUADRANGLE
MONTANA
15 MINUTE SERIES (TOPOGRAPHIC)

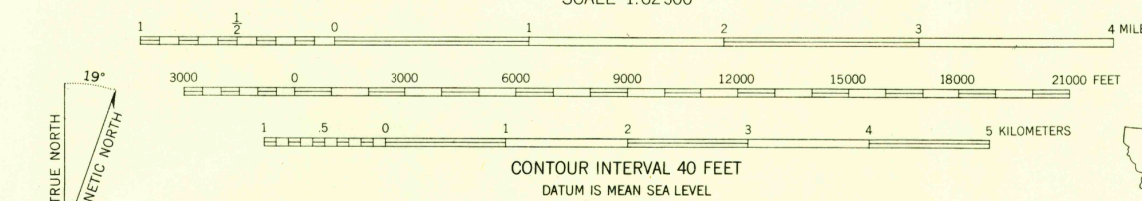


U.S.G.S.
FILE COPY
TOPOGRAPHIC DIVISION

USGS
Historical File
Topographic Division

U.S.G.S.
FILE COPY
TOPOGRAPHIC DIVISION

Stereo compilation by Fairchild Aerial Surveys, Inc. for the Bureau of Reclamation. Field examination and publication by the Geological Survey as part of the Department of the Interior program for the development of the Missouri River Basin. Control by USGS and USC&GS. Topography from aerial photographs by stereoplanigraph methods. Aerial photographs taken 1947. Field check 1950. Polyconic projection, 1927 North American datum, 10,000-foot grid based on Montana coordinate system, south zone. Dashed land lines indicate approximate locations. All mines unless otherwise indicated are inactive. 1000-meter Universal Transverse Mercator grid ticks, zone 12, shown in blue.



ROAD CLASSIFICATION

| | | |
|-------------|----------------|-----------------|
| Heavy-duty | 4 LANE 16 LANE | Light-duty |
| Medium-duty | 4 LANE 16 LANE | Unimproved dirt |
| U. S. Route | | State Route |

DEVILS FENCE, MONT.
N4600-W1145/15

FOR SALE BY U. S. GEOLOGICAL SURVEY, FEDERAL CENTER, DENVER, COLORADO OR WASHINGTON 25, D. C.
A FOLDER DESCRIBING TOPOGRAPHIC MAPS AND SYMBOLS IS AVAILABLE ON REQUEST

1950

DEC 20 1957
2945