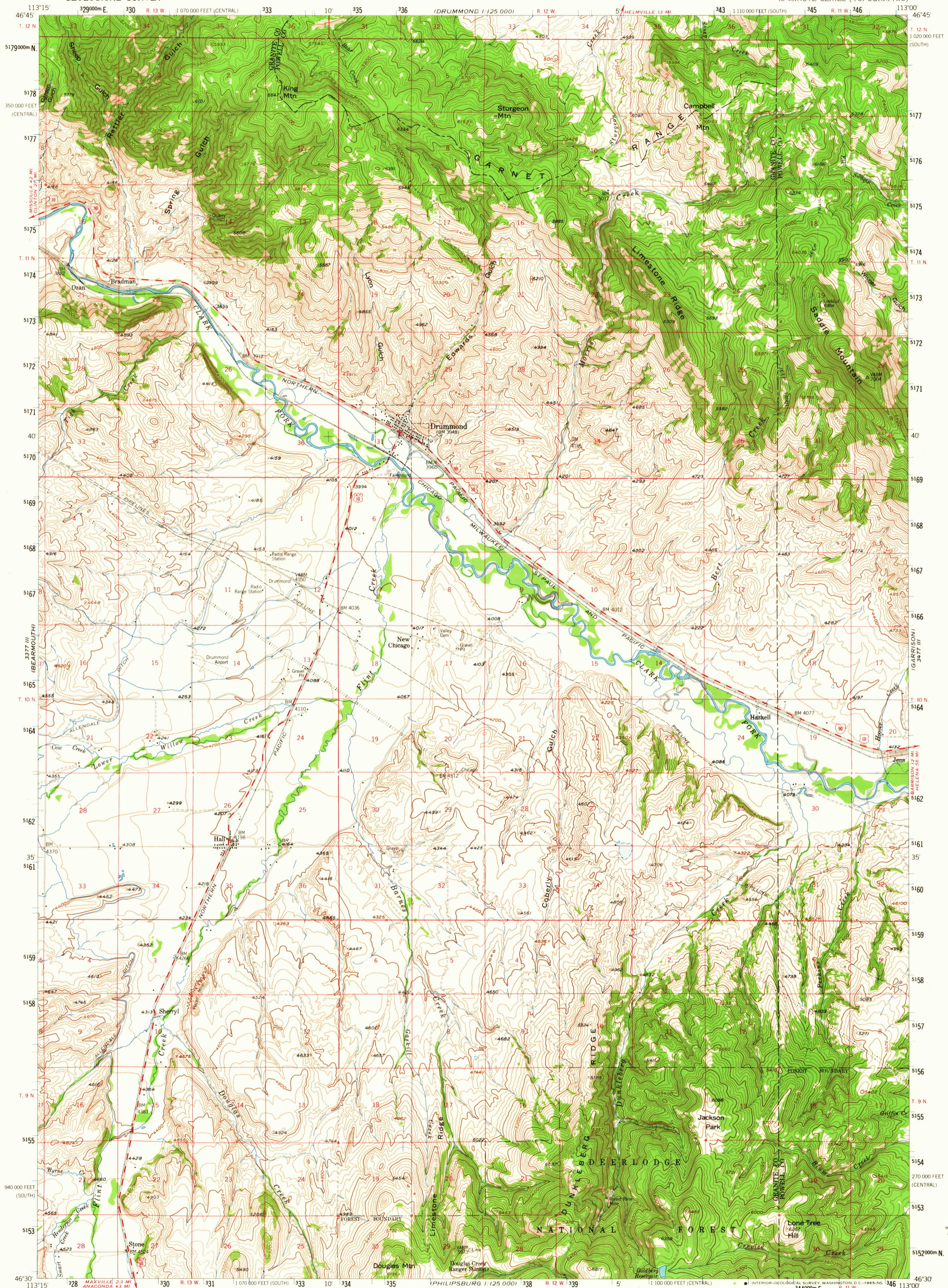
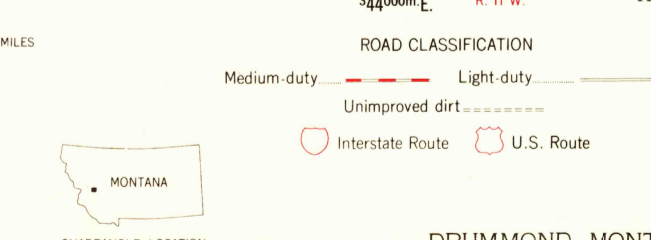
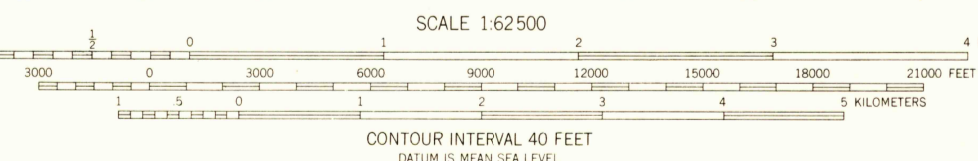
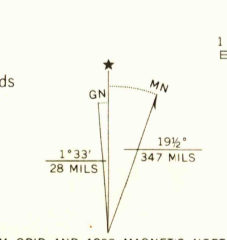


UNITED STATES
DEPARTMENT OF THE INTERIOR
GEOLOGICAL SURVEY

DRUMMOND QUADRANGLE
MONTANA
15 MINUTE SERIES (TOPOGRAPHIC)



Maped, edited, and published by the Geological Survey
Control by USGS and USC&GS
Topography from aerial photographs by photogrammetric methods
Aerial photographs taken 1954-1955. Field check 1958
Polyconic projection. 1927 North American datum
10,000-foot grid based on Montana coordinate system,
south and central zones
1000-meter Universal Transverse Mercator grid ticks,
zone 12, shown in blue
Land lines unurveyed in part of T.9 N., R.12 W.



THIS MAP COMPLIES WITH NATIONAL MAP ACCURACY STANDARDS
FOR SALE BY U.S. GEOLOGICAL SURVEY, DENVER 25, COLORADO OR WASHINGTON 25, D.C.
A FOLDER DESCRIBING TOPOGRAPHIC MAPS AND SYMBOLS IS AVAILABLE ON REQUEST

DRUMMOND, MONT.
N4630-W11300/15
1958
AMS 3377 II-SERIES V794

USGS
Historical File
Topographic Division

U.S.G.S.
FILE COPY
TOPOGRAPHIC DIVISION

FEB 10 1965

3225