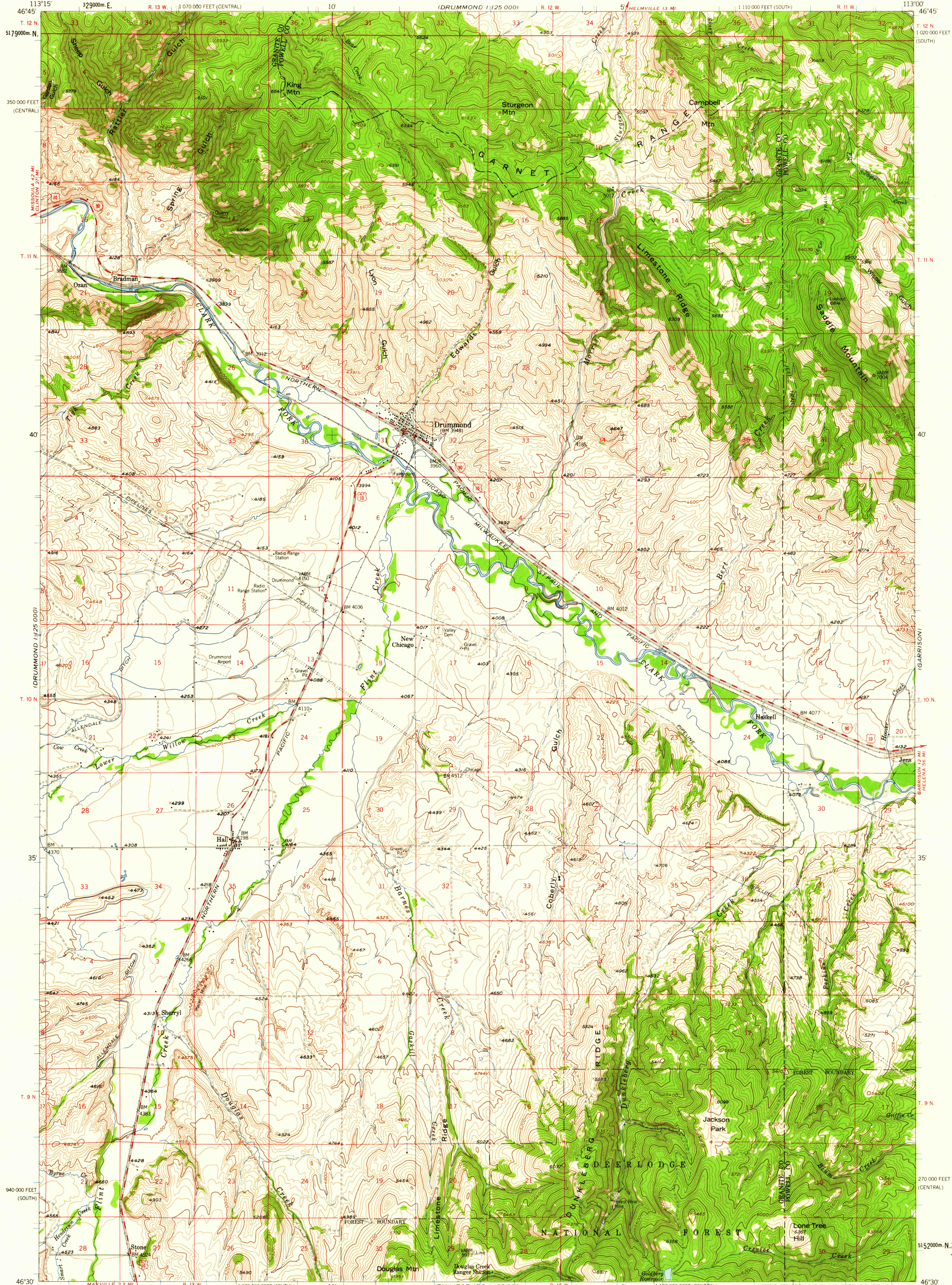
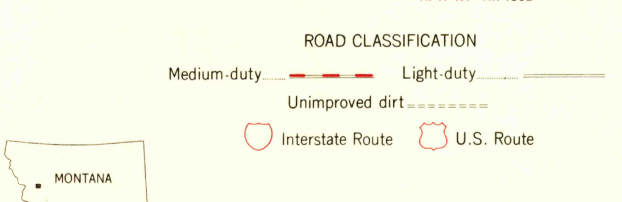
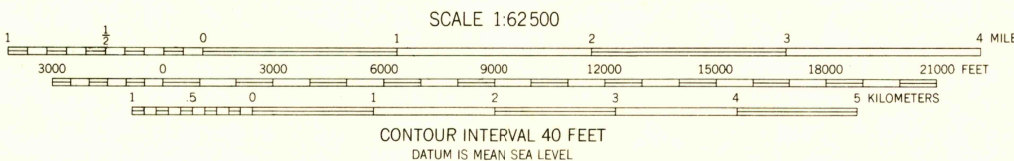


UNITED STATES
DEPARTMENT OF THE INTERIOR
GEOLOGICAL SURVEY

DRUMMOND QUADRANGLE
MONTANA
15 MINUTE SERIES (TOPOGRAPHIC)



Maped, edited, and published by the Geological Survey
Control by USGS and USC&GS
Topography from aerial photographs by photogrammetric methods
Aerial photographs taken 1954-1955. Field check 1958
Polyconic projection. 1927 North American datum
10,000-foot grid based on Montana coordinate system,
south and central zones
1000-meter Universal Transverse Mercator grid ticks,
zone 12, shown in blue
Land lines unsurveyed in part of T.9 N. R.12 W.
Unchecked elevations are shown in brown



DRUMMOND, MONT.
N4630-W11300/15
1958

THIS MAP COMPLIES WITH NATIONAL MAP ACCURACY STANDARDS
FOR SALE BY U.S. GEOLOGICAL SURVEY, DENVER 25, COLORADO OR WASHINGTON 25, D. C.
A FOLDER DESCRIBING TOPOGRAPHIC MAPS AND SYMBOLS IS AVAILABLE ON REQUEST

USGS
Historical File
Topographic Division

U.S.G.S.
FILE COPY
TOPOGRAPHIC DIVISION

FEB 13 1960

18.70