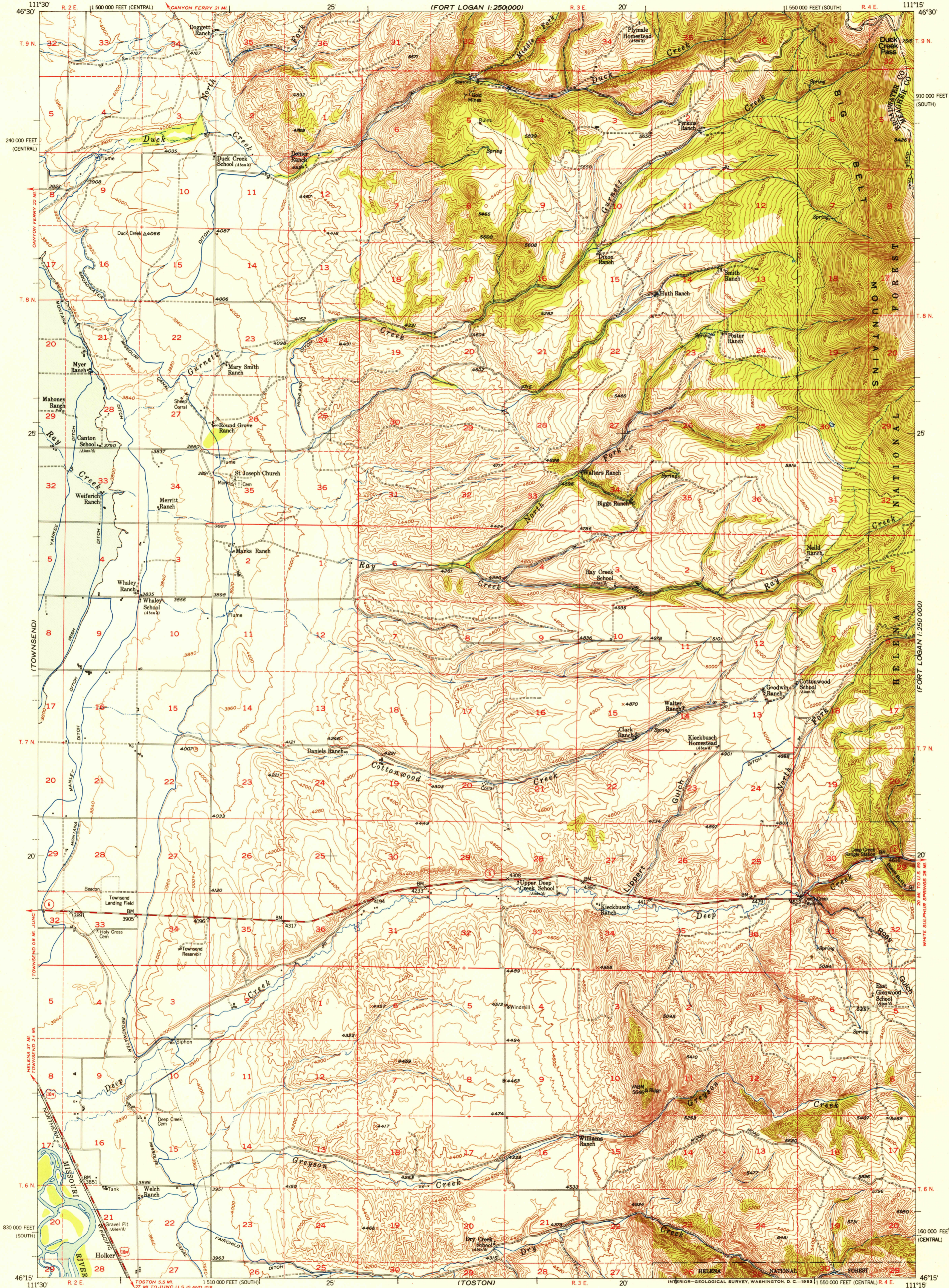


UNITED STATES  
DEPARTMENT OF THE INTERIOR  
GEOLOGICAL SURVEY

DUCK CREEK PASS QUADRANGLE  
MONTANA  
15 MINUTE SERIES (TOPOGRAPHIC)

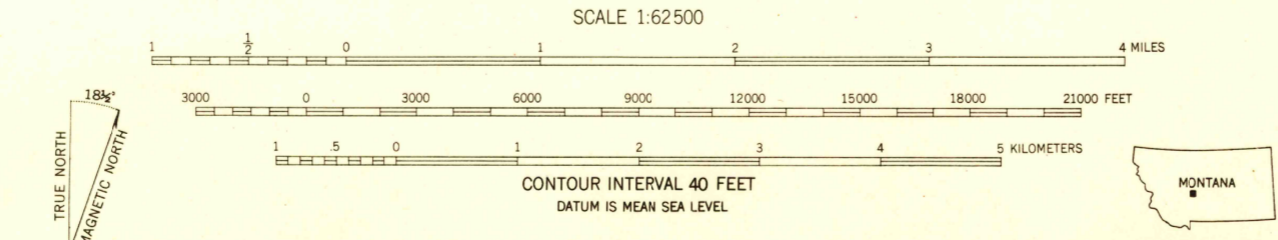


U.S.G.S.  
**FILE COPY**  
Inspection and Editing

U.S.G.S.  
**FILE COPY**  
Inspection and Editing

USGS  
Historical File  
Topographic Division

Stereo compilation by Fairchild Aerial Surveys, Inc. for the Bureau of Reclamation. Field examination and publication by the Geological Survey as part of the Department of the Interior program for the development of the Missouri River Basin. Control by USGS, USC&GS, USFS, and MRC. Topography from aerial photographs by stereoplano-graph methods. Aerial photographs taken 1947. Field check 1950. Polyconic projection. 1927 North American datum. 10,000-foot grid based on Montana coordinate system, central and south zones. Blue hachured area is proposed Canyon Ferry Reservoir (Elevation 3800). Dashed land lines indicate approximate locations.



ROAD CLASSIFICATION  
Heavy-duty ——— 4 LANE 1 LANE Light-duty ———  
Medium-duty ——— 4 LANE 1 LANE Unimproved dirt ———  
U.S. Route ——— State Route ———

DUCK CREEK PASS, MONT.  
N4615—W11115/15  
1950

THIS MAP COMPLIES WITH NATIONAL MAP ACCURACY STANDARDS  
FOR SALE BY U. S. GEOLOGICAL SURVEY, FEDERAL CENTER, DENVER, COLORADO OR WASHINGTON 25, D. C.  
A FOLDER DESCRIBING TOPOGRAPHIC MAPS AND SYMBOLS IS AVAILABLE ON REQUEST

DEC 28 1953 2675