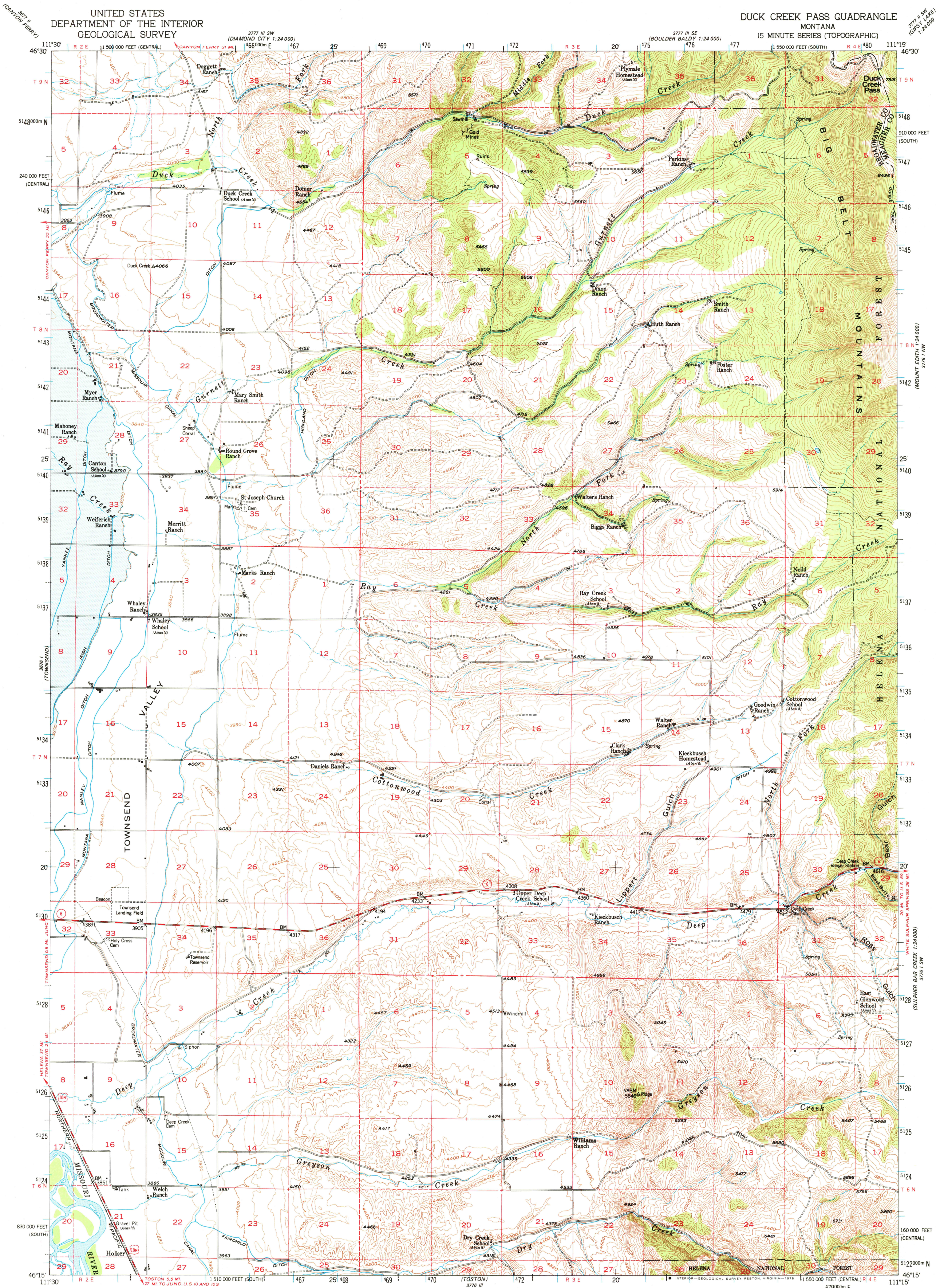
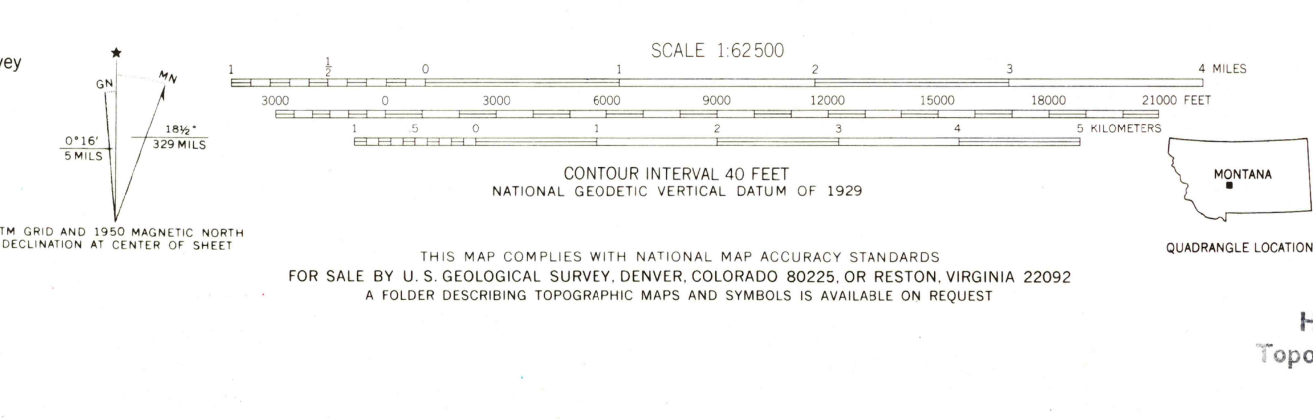


UNITED STATES
DEPARTMENT OF THE INTERIOR
GEOLOGICAL SURVEY

DUCK CREEK PASS QUADRANGLE
MONTANA
15 MINUTE SERIES (TOPOGRAPHIC)



Stereo compilation by Fairchild Aerial Surveys, Inc. for the Bureau of Reclamation. Field examination and publication by the Geological Survey as part of the Department of the Interior program for the development of the Missouri River Basin. Control by USGS, USC&GS, USFS, and MRC. Topography from aerial photographs by stereoplano-graph methods. Aerial photographs taken 1947. Field check 1950. Polyconic projection, 1927 North American datum, 10,000-foot grid based on Montana coordinate system, central and south zones. Blue hatched area is proposed Canyon Ferry Reservoir (Elevation 3800). Dashed land lines indicate approximate locations. 1000-meter Universal Transverse Mercator grid ticks, zone 12, shown in blue.



ROAD CLASSIFICATION
Heavy-duty ——— LANE 6 LANE Light-duty
Medium-duty ——— LANE 6 LANE Unimproved dirt
U. S. Route ○ State Route

DUCK CREEK PASS, MONT.
N4615—W11115/15

USGS 1950
AMS 3776 IV—SERIES V794

NOV 27 1978
2300