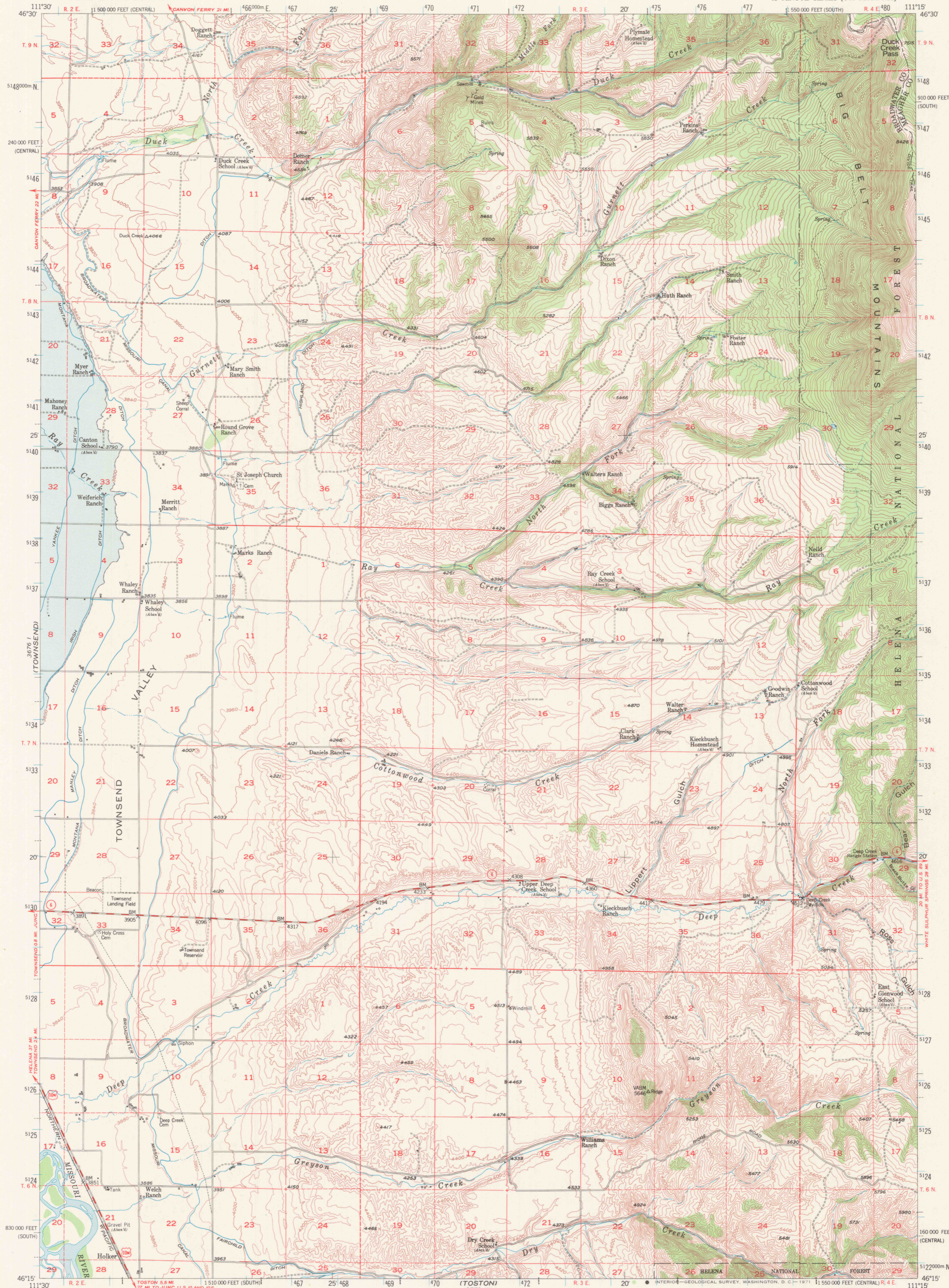
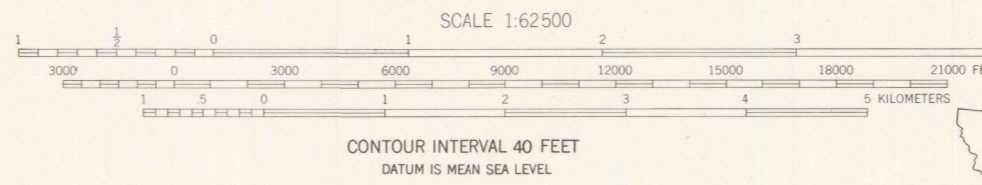
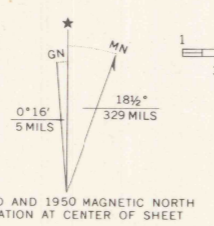


UNITED STATES
DEPARTMENT OF THE INTERIOR
GEOLOGICAL SURVEY

DUCK CREEK PASS QUADRANGLE
MONTANA
15 MINUTE SERIES (TOPOGRAPHIC)



Stereo compilation by Fairchild Aerial Surveys, Inc. for the Bureau of Reclamation. Field examination and publication by the Geological Survey as part of the Interior program for the development of the Missouri River Basin. Control by USGS, USC&GS, USFS, and MRC. Topography from aerial photographs by stereoplanning methods. Aerial photographs taken 1947. Field check 1950. Polyconic projection, 1927 North American datum. 10,000-foot grid based on Montana coordinate system, central and south zones. Blue hatched area is proposed Canyon Ferry Reservoir (Elevation 3800). Dashed land lines indicate approximate locations. 1000-meter Universal Transverse Mercator grid ticks, zone 12, shown in blue.



ROAD CLASSIFICATION

Heavy-duty	4 LANE 16 LANE	Light-duty	2 LANE 16 LANE
Medium-duty	4 LANE 16 LANE	Unimproved dirt	-----
U. S. Route	Ⓜ	Slate Route	Ⓢ



DUCK CREEK PASS, MONT.
N4615-W11115/15

1950

AMS 3776 IV--SERIES V794

THIS MAP COMPLIES WITH NATIONAL MAP ACCURACY STANDARDS
FOR SALE BY U. S. GEOLOGICAL SURVEY, DENVER, COLORADO 80225 OR WASHINGTON, D. C. 20242
A FOLDER DESCRIBING TOPOGRAPHIC MAPS AND SYMBOLS IS AVAILABLE ON REQUEST