

DEER LODGE

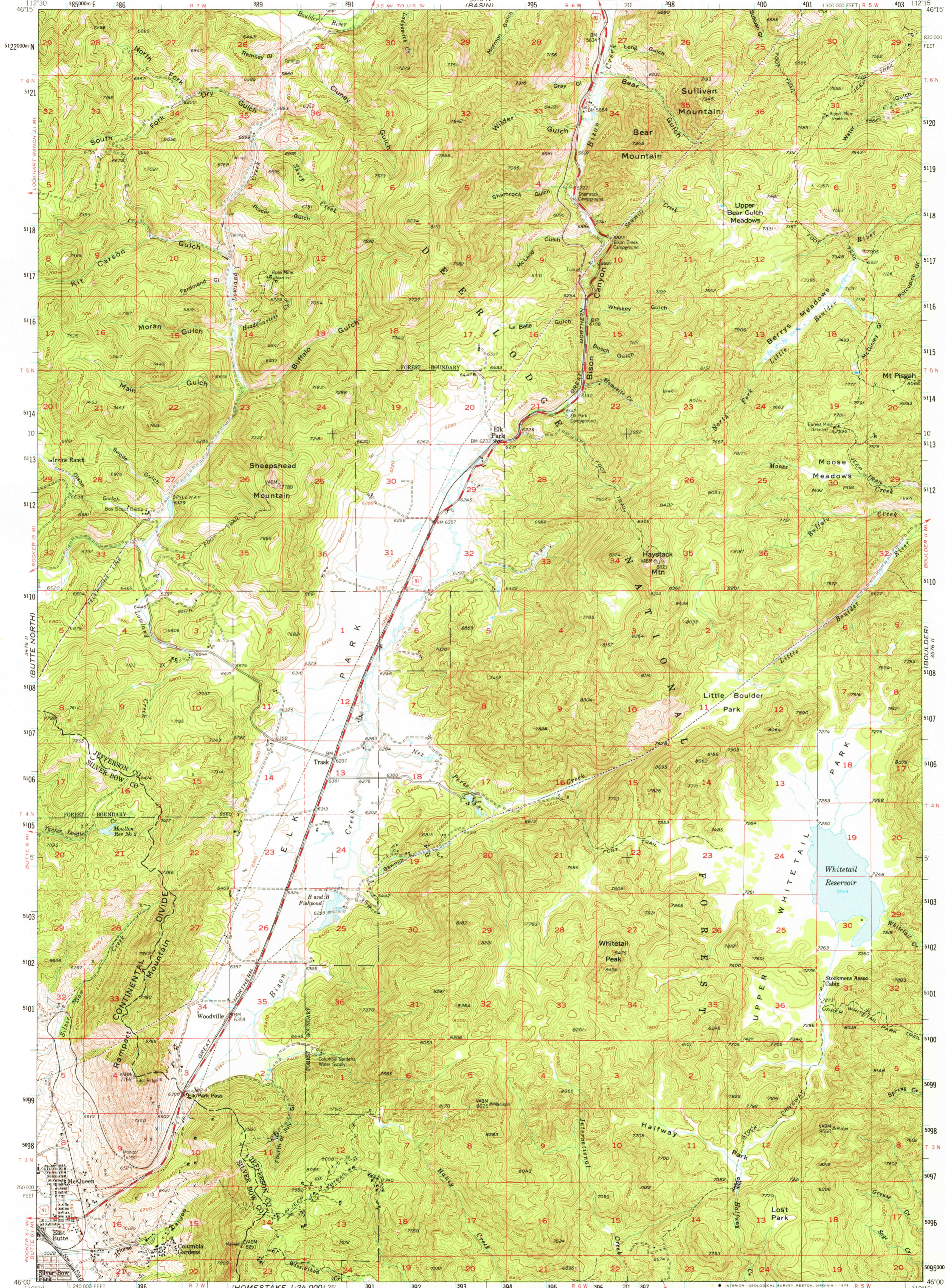
UNITED STATES  
DEPARTMENT OF THE INTERIOR  
GEOLOGICAL SURVEY



UNITED STATES  
ATOMIC ENERGY COMMISSION

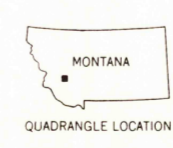
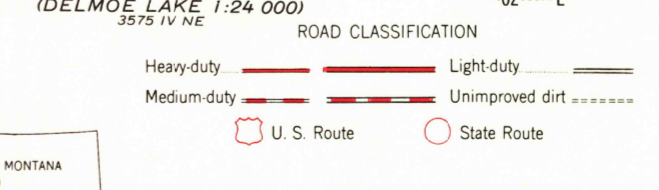
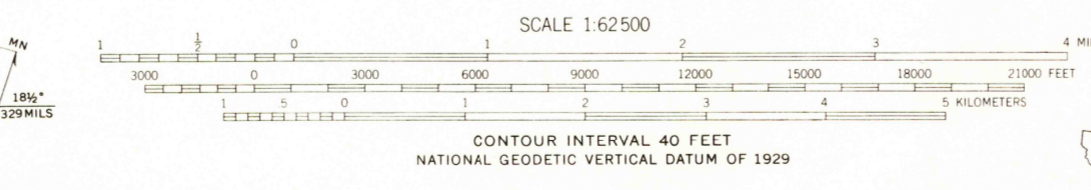
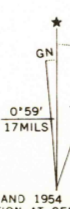
ELK PARK QUADRANGLE  
MONTANA  
15 MINUTE SERIES (TOPOGRAPHIC)

JEFFERSON CITY



BUTTE SOUTH

Mapped, edited, and published by the Geological Survey  
Control by USGS and USC&GS  
Topography from aerial photographs by multiplex methods  
Aerial photographs taken 1952. Field check 1954  
Polyconic projection. 1927 North American datum  
10,000-foot grid based on Montana coordinate system,  
south zone  
Red tint indicates areas in which only  
landmark buildings are shown  
Dashed land lines indicate approximate locations  
Unchecked elevations are shown in brown  
1000-meter Universal Transverse Mercator grid ticks,  
zone 12, shown in blue  
There may be private inholdings within the boundaries of  
the National or State reservations shown on this map



THIS MAP COMPLIES WITH NATIONAL MAP ACCURACY STANDARDS  
FOR SALE BY U. S. GEOLOGICAL SURVEY, DENVER, COLORADO 80225, OR RESTON, VIRGINIA 22092  
A FOLDER DESCRIBING TOPOGRAPHIC MAPS AND SYMBOLS IS AVAILABLE ON REQUEST

USGS  
Historical File  
Topographic Division

ELK PARK, MONT.  
N4600-W11215/15  
1954  
AMS 3576 III-SERIES V794

3800

MAY 01 1979