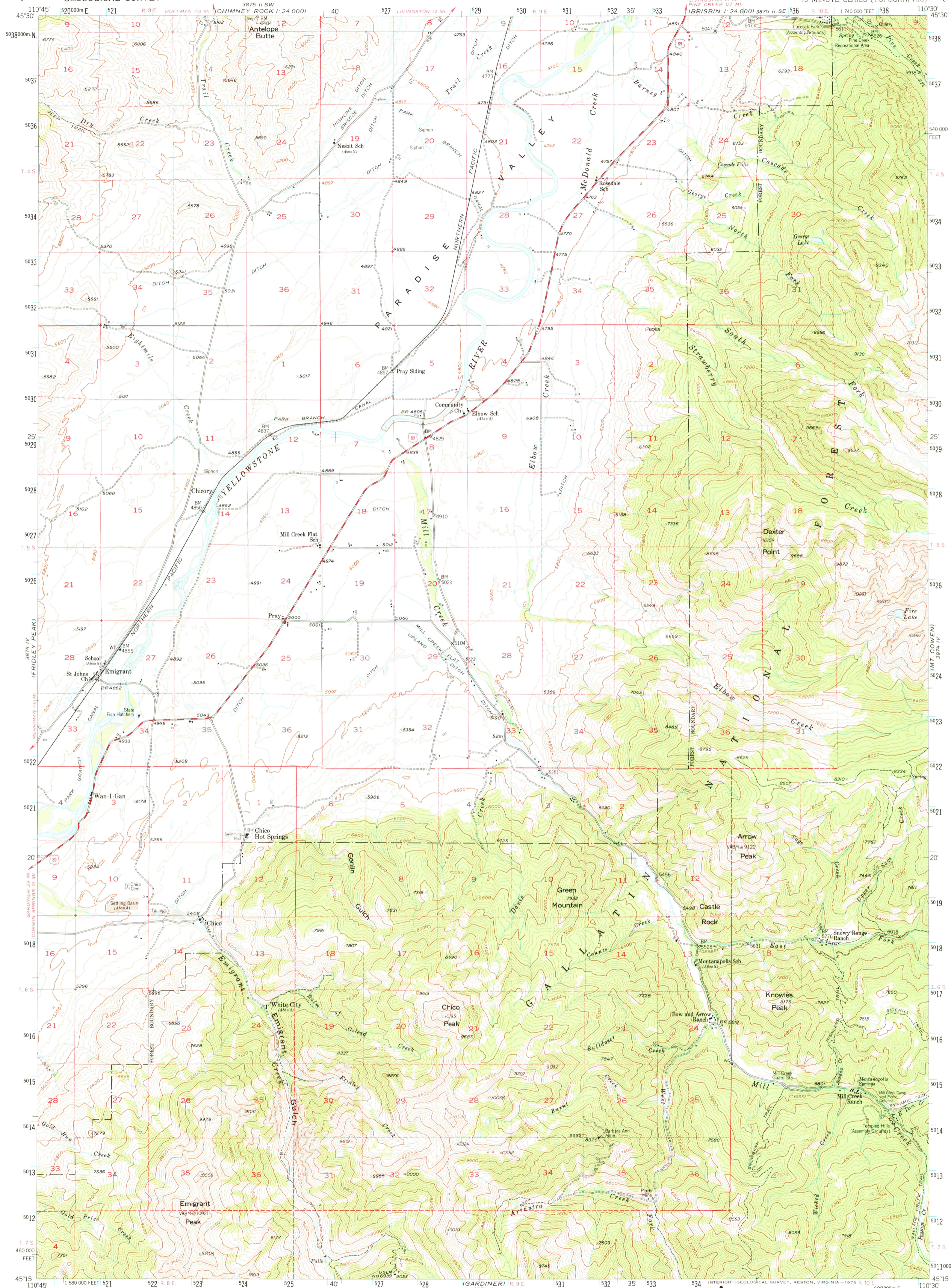


UNITED STATES
DEPARTMENT OF THE INTERIOR
GEOLOGICAL SURVEY

EMIGRANT QUADRANGLE
MONTANA-PARK CO.
15 MINUTE SERIES (TOPOGRAPHIC)



Mapped, edited, and published by the Geological Survey as part of the Department of the Interior program for the development of the Missouri River Basin

Control by USGS and USC&GS

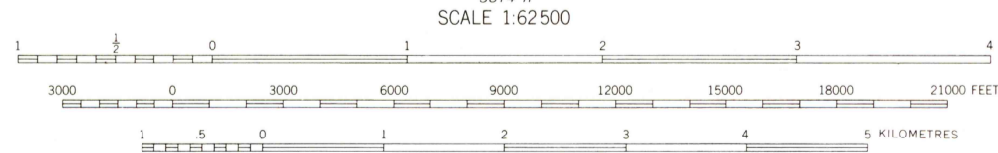
Topography from aerial photographs by photogrammetric methods
Aerial photographs taken 1949. Field check 1955

Polyconic projection. 1927 North American datum
10,000-foot grid based on Montana coordinate system, south zone

Dashed lines indicate approximate locations
Land lines surveyed in T. 7 S., R. 9 and 10 E. and in parts of T. 4, 5, and 6 S., R. 10 E., and T. 7 S., R. 8 E.

Unchecked elevations are shown in brown

1000-metre Universal Transverse Mercator grid ticks, zone 12, shown in blue



ROAD CLASSIFICATION
Medium duty ——— Light duty ———
Unimproved dirt ———
U.S. Route ———

EMIGRANT, MONT.
N4515—W1030/15
1955

AMS 3874 I—SERIES V794

USGS
HISTORICAL FILE
TOPOGRAPHIC DIVISION

JUN 20 1976

4195