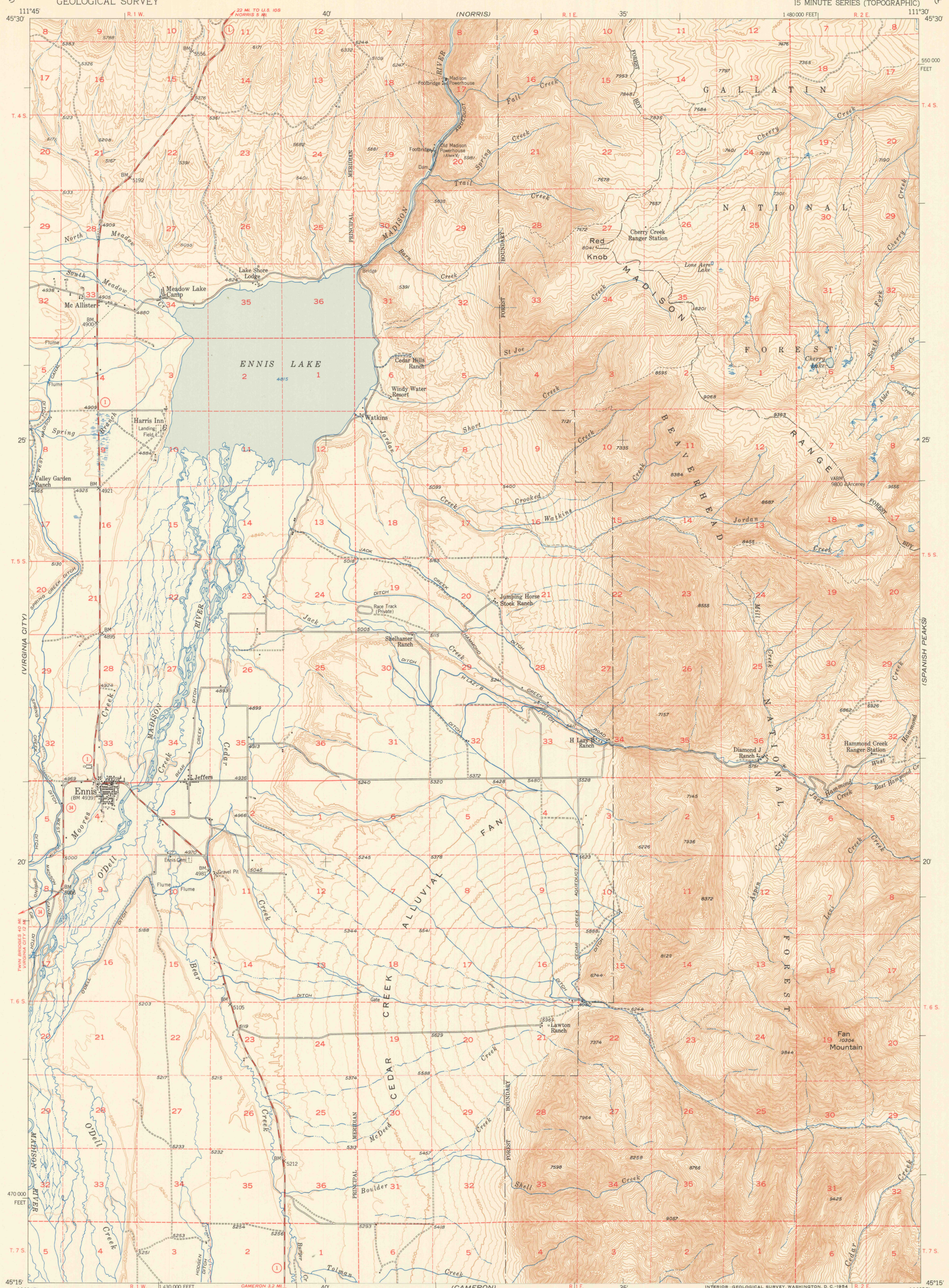


(HARRISON)

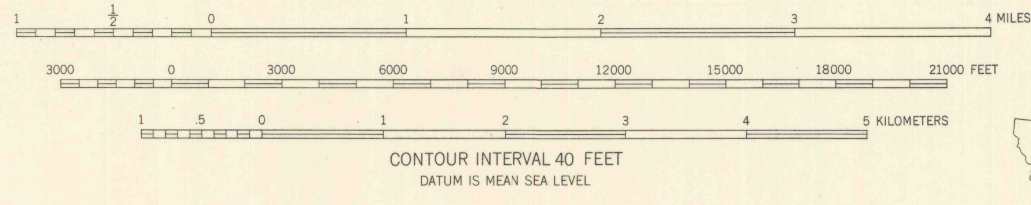
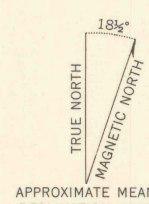
UNITED STATES
DEPARTMENT OF THE INTERIOR
GEOLOGICAL SURVEY

ENNIS QUADRANGLE
MONTANA-MADISON CO.
15 MINUTE SERIES (TOPOGRAPHIC)

(LANGENEY)



Stereo compilation by Fairchild Aerial Surveys Inc., for the Bureau of Reclamation
Field examination and publication by the Geological Survey as part of the Department of the Interior program for the development of the Missouri River Basin
Control by USGS and USC&GS
Topography from aerial photographs by stereoplanigraph methods 1948. Aerial photographs taken 1947
Field check 1949
Polyconic projection. 1927 North American datum
10,000-foot grid based on Montana coordinate system, south zone
Approximate mean magnetic declination, 1949
Dashed land lines indicate approximate locations
Unchecked elevations are shown in brown



ROAD CLASSIFICATION

Heavy-duty	4 LANE 6 LANE	Light-duty
Medium-duty	4 LANE 6 LANE	Unimproved dirt
U. S. Route		State Route

ENNIS, MONT.
N4515-W11130/15
1949

THIS MAP COMPLIES WITH NATIONAL MAP ACCURACY STANDARDS
THIS MAP IS AVAILABLE IN BOTH SHADED RELIEF AND CONTOUR EDITIONS
FOR SALE BY U. S. GEOLOGICAL SURVEY, FEDERAL CENTER, DENVER, COLORADO OR WASHINGTON 25, D. C.
A FOLDER DESCRIBING TOPOGRAPHIC MAPS AND SYMBOLS IS AVAILABLE ON REQUEST

(VARNEY)

(SPHINX MOUNTAIN)