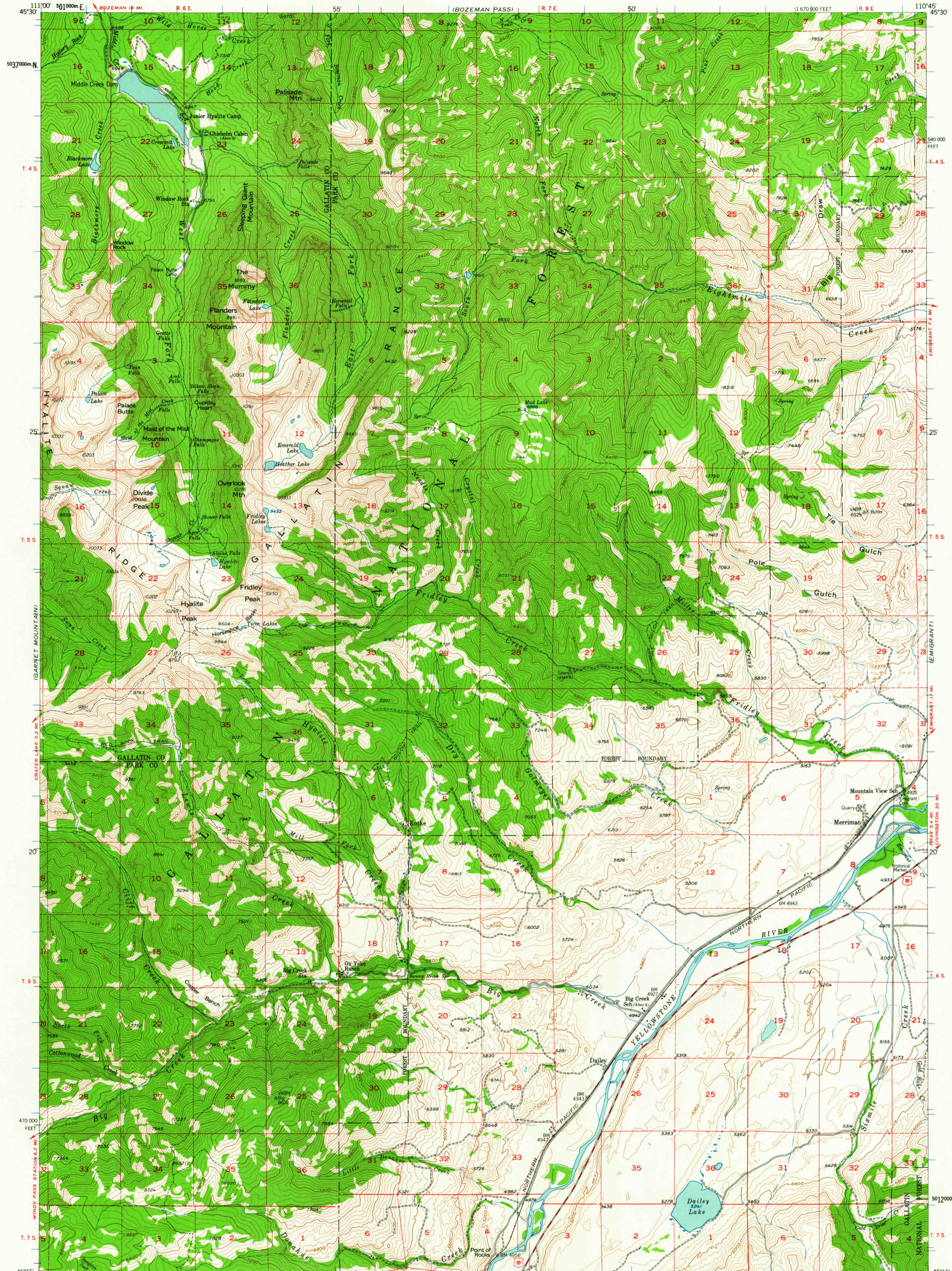
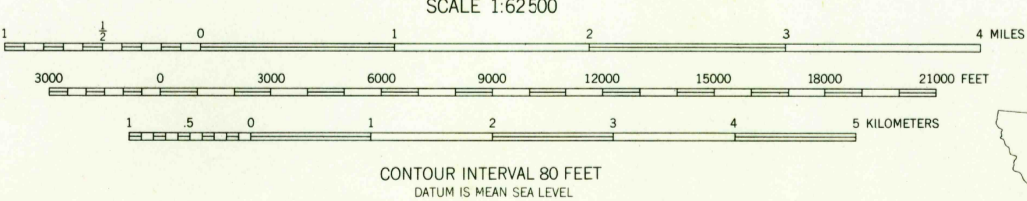
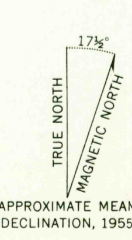


CHIMNEY ROCK
1:24,000



Mapped, edited, and published by the Geological Survey as part of the Department of the Interior program for the development of the Missouri River Basin
Control by USGS and USC&GS
Topography from aerial photographs by stereoplanigraph methods 1948 for the Bureau of Reclamation and by multiplex methods 1954 by USGS
Aerial photographs taken 1947 and 1949. Field check 1955
Polyconic projection. 1927 North American datum
10,000-foot grid based on Montana coordinate system, south zone
Dashed land lines indicate approximate locations
Certain land lines are omitted in T. 6 S., R. 7 E. because of insufficient data
Unchecked elevations are shown in brown



ROAD CLASSIFICATION
Medium-duty ——— Light-duty ———
Unimproved dirt - - - - -
U. S. Route

THIS MAP COMPLIES WITH NATIONAL MAP ACCURACY STANDARDS
FOR SALE BY U. S. GEOLOGICAL SURVEY, DENVER 25, COLORADO OR WASHINGTON 25, D. C.
A FOLDER DESCRIBING TOPOGRAPHIC MAPS AND SYMBOLS IS AVAILABLE ON REQUEST

FRIDLEY PEAK, MONT.
N4515-W11045/15

1955

USGS
Historical File
Topographic Division

MAY - 2 1963

3215