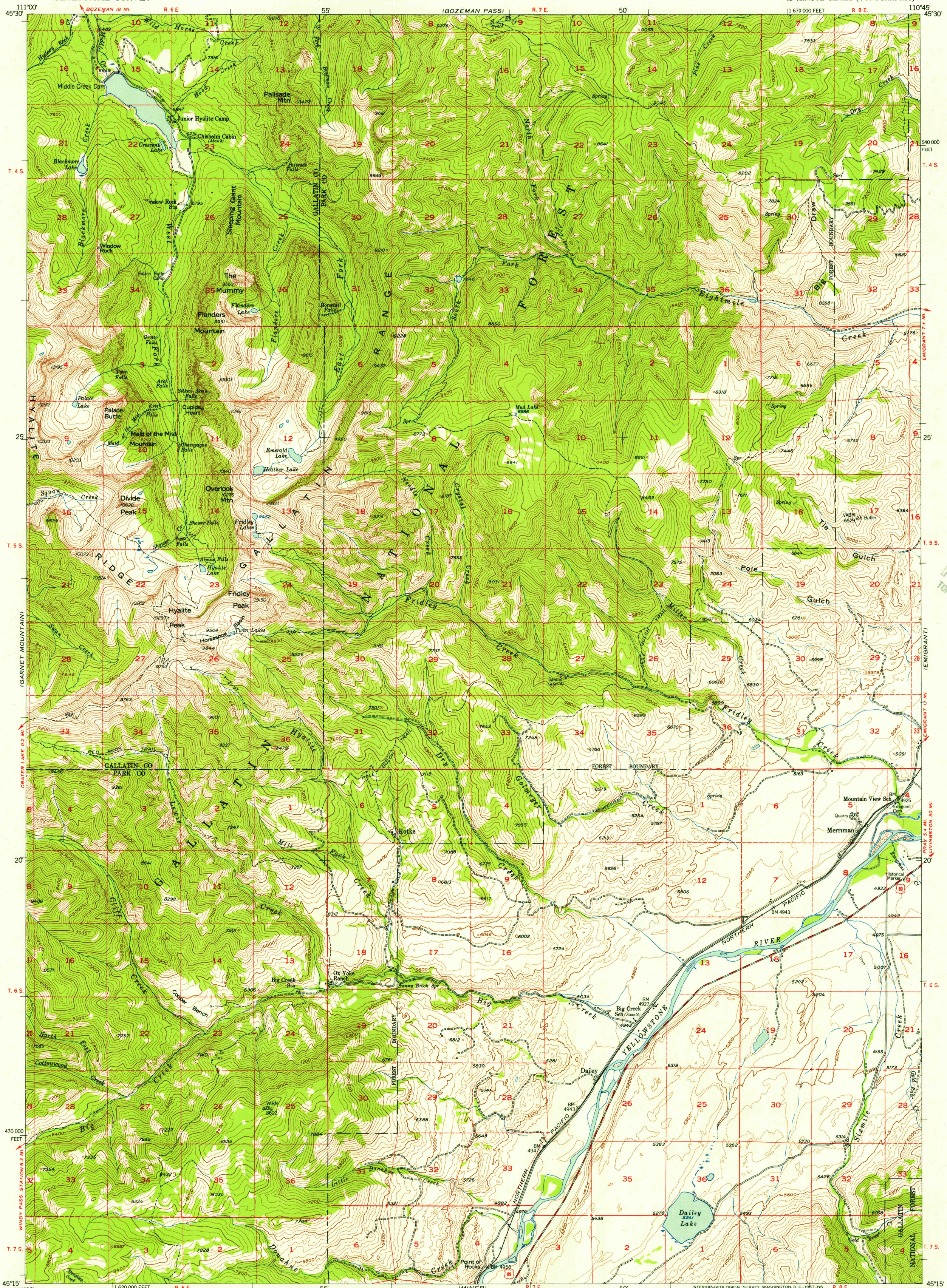


CHIMNEY ROCK
1:24,000



U.S.G.S.
FILE COPY
TOPOGRAPHIC DIVISION

U.S.G.S.
FILE COPY
TOPOGRAPHIC DIVISION

USGS
Historical File
Topographic Division

Maped, edited, and published by the Geological Survey as part of the Department of the Interior program for the development of the Missouri River Basin.

Control by USGS and USC&GS

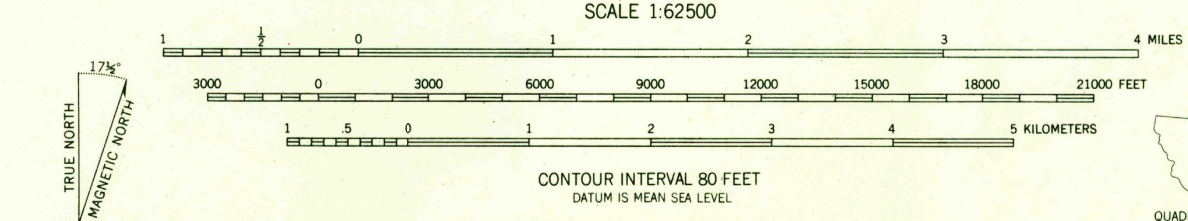
Topography from aerial photographs by stereoplanograph methods 1948 for the Bureau of Reclamation and by multiplex methods 1954 by USGS

Aerial photographs taken 1947 and 1949. Field check 1955

Polyconic projection. 1927 North American datum 10,000-foot grid based on Montana coordinate system, south zone

Dashed land lines indicate approximate locations. Certain land lines are omitted in T.6.S.-R.7.E. because of insufficient data

Unchecked elevations are shown in brown



ROAD CLASSIFICATION

Medium-duty ——— Light-duty ———

Unimproved dirt - - - - -

U.S. Route

FRIDLEY PEAK, MONT.
N4515-W11045/15
1955

FOR SALE BY U.S. GEOLOGICAL SURVEY, DENVER 2, COLORADO OR WASHINGTON 25, D.C.
A FOLDER DESCRIBING TOPOGRAPHIC MAPS AND SYMBOLS IS AVAILABLE ON REQUEST

JUL 11 1957

2015