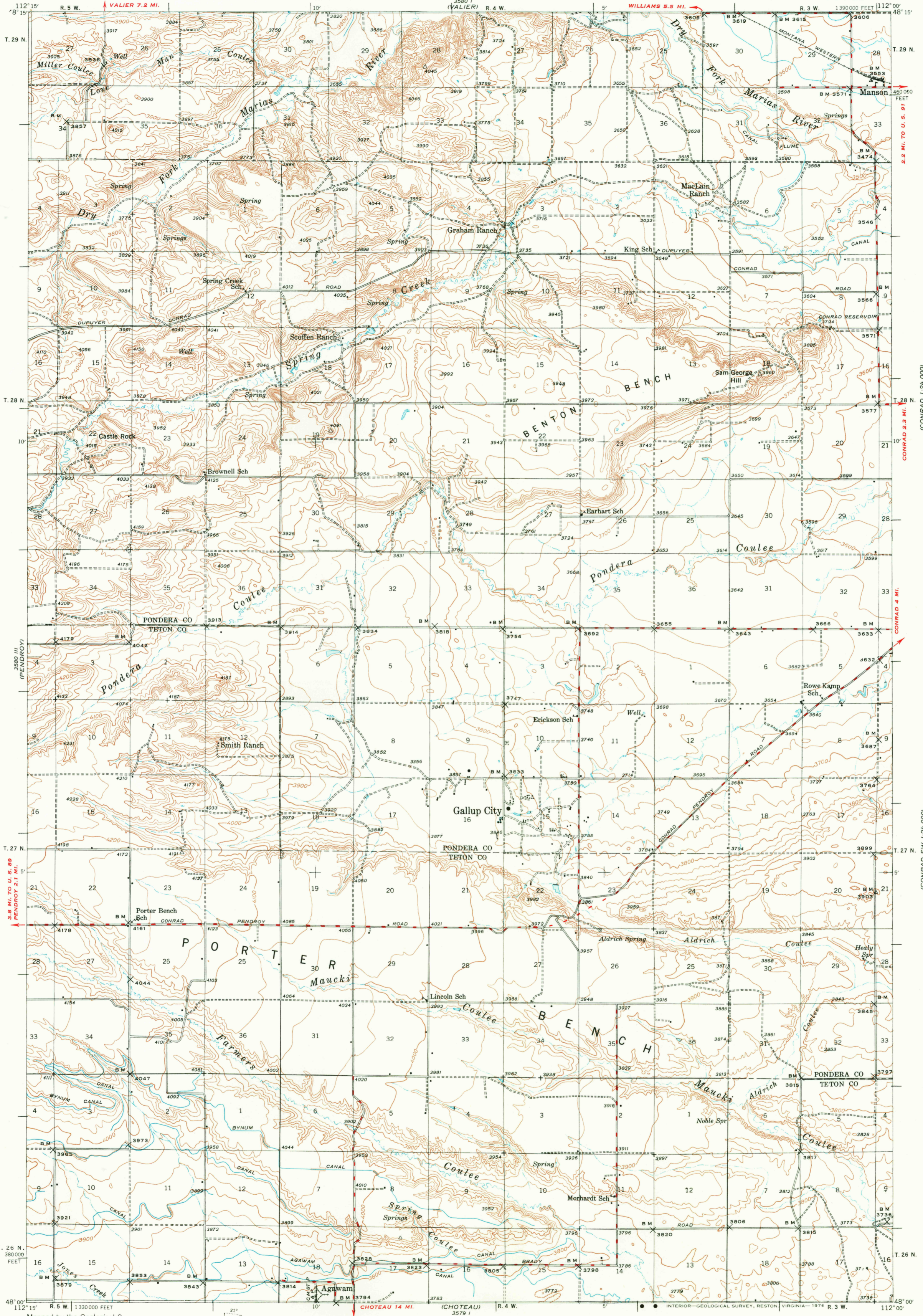


LAKE FRANCES

UNITED STATES
DEPARTMENT OF THE INTERIOR
GEOLOGICAL SURVEY

MONTANA
GALLUP CITY QUADRANGLE
15-MINUTE SERIES

PIONEER SCHOOL 1:24,000

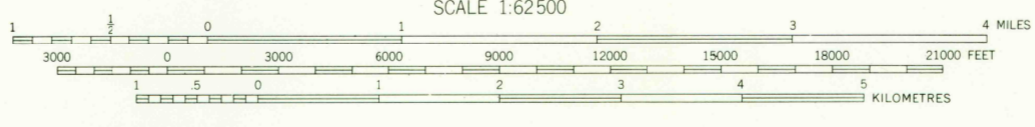


Mapped by the Geological Survey
1936 and 1938

ROAD CLASSIFICATION

HARD-SURFACE ALL WEATHER ROADS DRY WEATHER ROADS
 Heavy-duty 2-LANE LANE Improved dirt
 Medium-duty 2-LANE LANE Unimproved dirt
 Loose-surface, graded, or narrow hard-surface
 U. S. Route State Route

APPROXIMATE MEAN
DECLINATION, 1938



Contour interval 25 feet
NATIONAL GEODETIC VERTICAL DATUM OF 1929

THIS MAP COMPLIES WITH NATIONAL MAP ACCURACY STANDARDS
FOR SALE BY U. S. GEOLOGICAL SURVEY, DENVER, COLORADO 80225, OR RESTON, VIRGINIA 22092
A FOLDER DESCRIBING TOPOGRAPHIC MAPS AND SYMBOLS IS AVAILABLE ON REQUEST

Polyconic projection, 1927 North American datum
10,000-foot grid based on Montana (North)
rectangular coordinate system

GALLUP CITY, MONT.
N4800-W11200/15

1938
AMS 3580 II—SERIES V794

USGS
Historical File
Topographic Division

JUN 14 1976