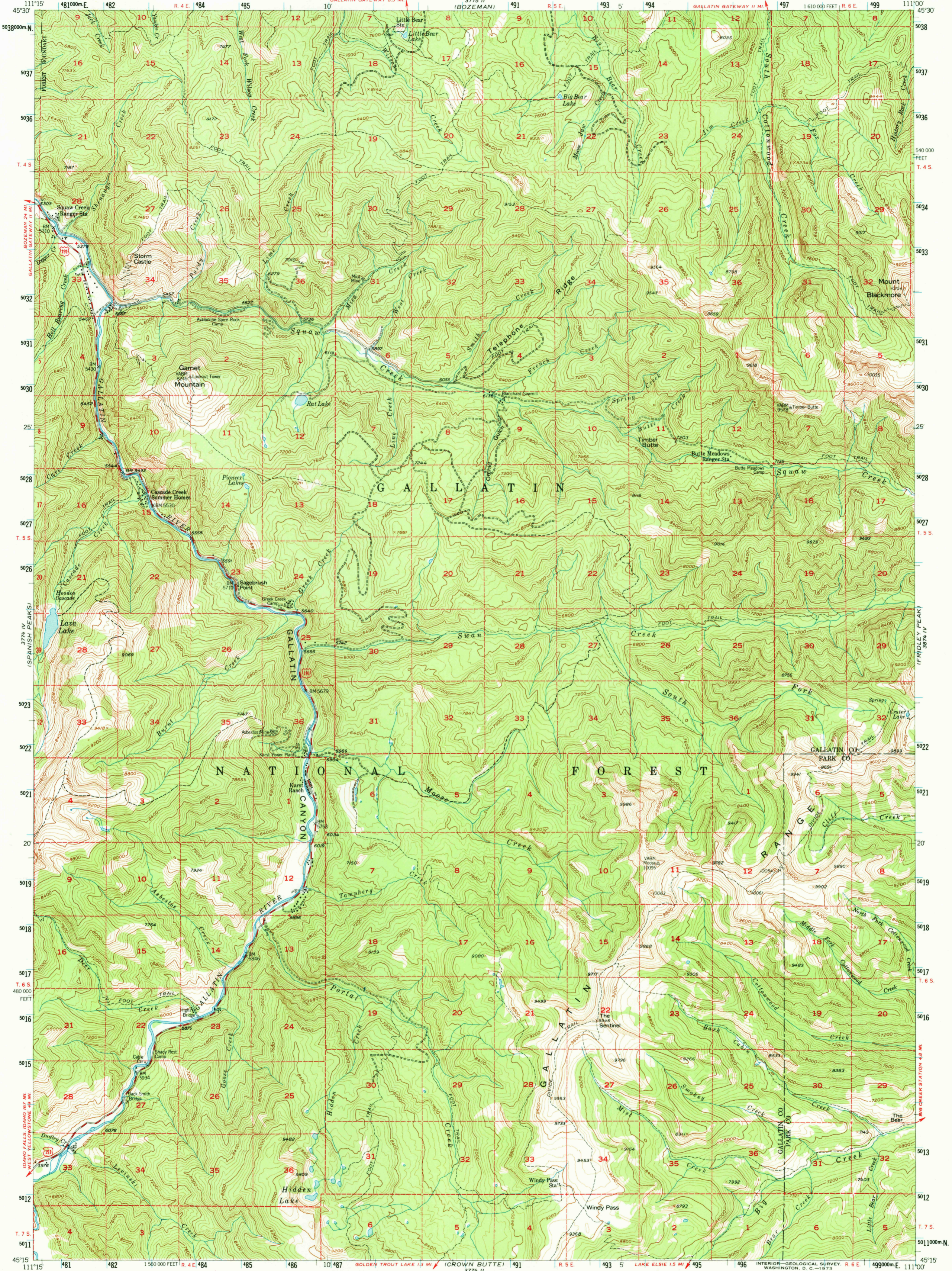


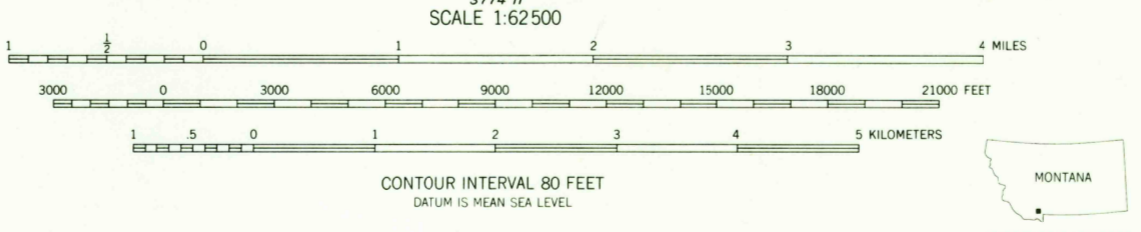
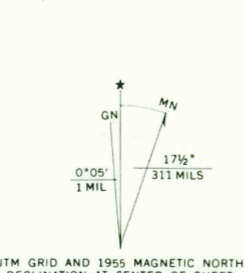
3775 II (BOZEMAN)
3775 III (BOZEMAN PASS)
3775 IV (SPANISH PEAKS)
3775 V (SPRING MOUNTAIN)

UNITED STATES
DEPARTMENT OF THE INTERIOR
GEOLOGICAL SURVEY

GARNET MOUNTAIN QUADRANGLE
MONTANA
15 MINUTE SERIES (TOPOGRAPHIC)



Maped, edited, and published by the Geological Survey as part of the Department of the Interior program for the development of the Missouri River Basin
Control by USGS and USC&GS
Topography from aerial photographs by stereoplanigraph methods 1948 for the Bureau of Reclamation and by multiple methods 1954 by USGS
Aerial photographs taken 1947 and 1949. Field check 1955
Polyconic projection. 1927 North American datum
10,000-foot grid based on Montana coordinate system, south zone
Dashed land lines indicate approximate locations
Land lines unsurveyed in part of T. 7 S., R. 4 E.
Unchecked elevations are shown in brown
1000-meter Universal Transverse Mercator grid ticks, zone 12, shown in blue



ROAD CLASSIFICATION
1964
Medium duty — Light duty
Unimproved dirt —
U. S. Route

CONTOUR INTERVAL 80 FEET
DATUM IS MEAN SEA LEVEL
THIS MAP COMPLIES WITH NATIONAL MAP ACCURACY STANDARDS
FOR SALE BY U. S. GEOLOGICAL SURVEY, DENVER, COLORADO 80225 OR WASHINGTON, D. C. 20242
A FOLDER DESCRIBING TOPOGRAPHIC MAPS AND SYMBOLS IS AVAILABLE ON REQUEST

GARNET MOUNTAIN, MONT.
N4515-W11100/15
1955

AMS 3774 I—SERIES V794

USGS
HISTORICAL FILE
TOPOGRAPHIC DIVISION

FEB 28 1973

4455