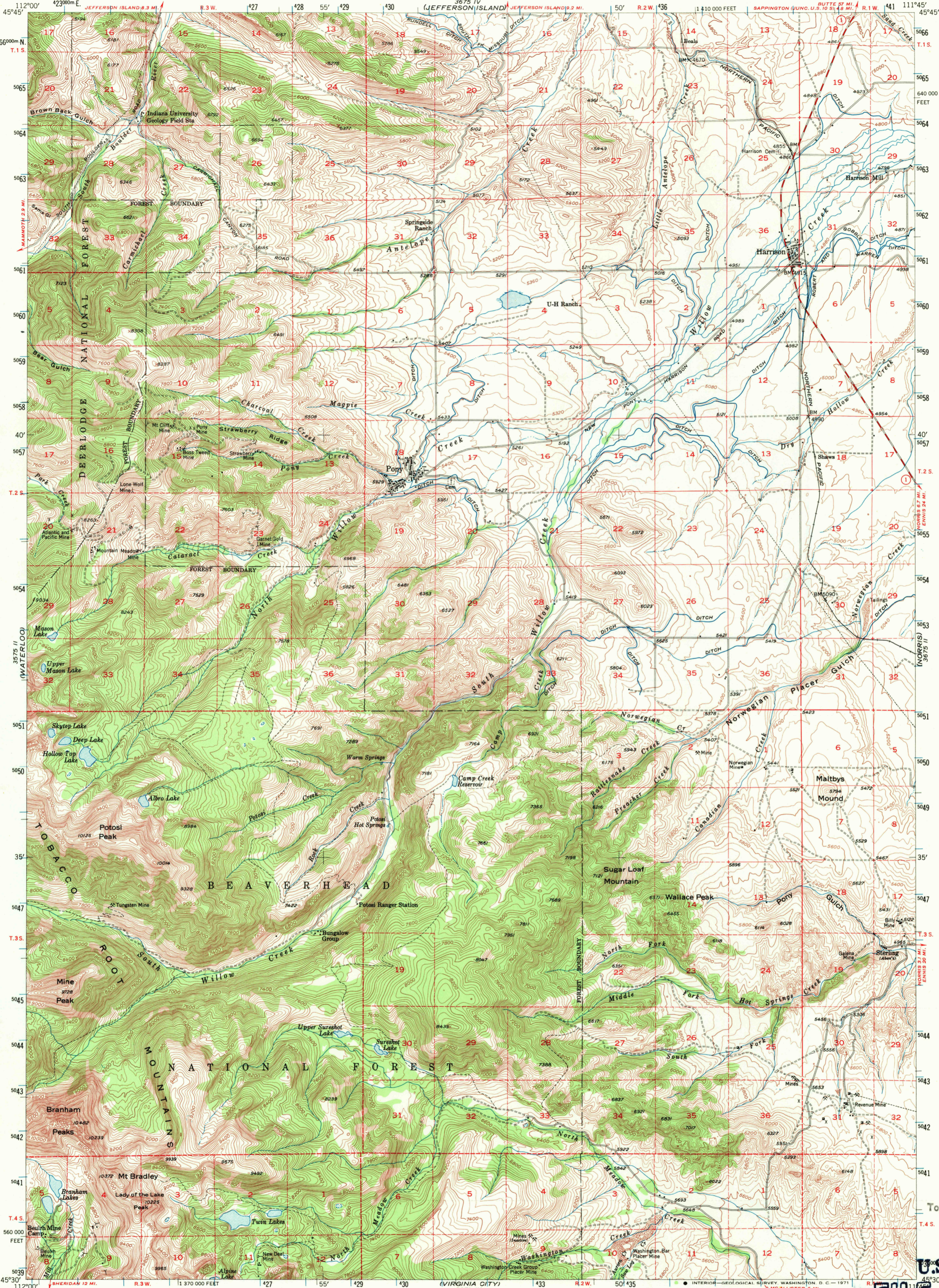
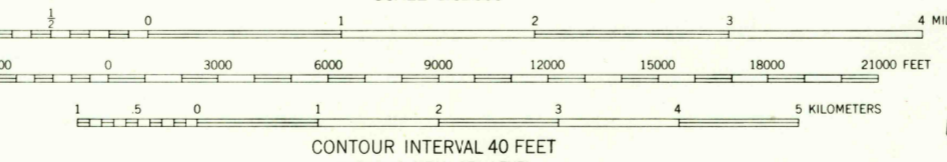
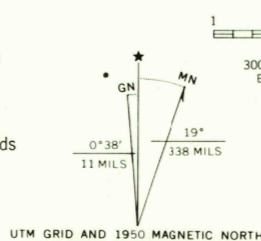


UNITED STATES  
DEPARTMENT OF THE INTERIOR  
GEOLOGICAL SURVEY

HARRISON QUADRANGLE  
MONTANA-MADISON CO.  
15 MINUTE SERIES (TOPOGRAPHIC)



Stereo compilation by Fairchild Aerial Surveys, Inc. for the Bureau of Reclamation  
Field examination and publication by the Geological Survey as part of the Department of the Interior program for the development of the Missouri River Basin  
Control by USGS and USC&GS  
Topography from aerial photographs by stereoplanigraph methods 1947-1948. Aerial photographs taken 1947. Field check 1950  
Polyconic projection. 1927 North American datum  
10,000-foot grid based on Montana coordinate system, south zone  
Dashed land lines indicate approximate locations  
Land lines unsurveyed in T.3.S.—R.3.W. and in part of T.3.S.—R.2.W.  
1000-meter Universal Transverse Mercator grid ticks, zone 12, shown in blue



ROAD CLASSIFICATION

Heavy-duty	4 LANE 16 LANE	Light-duty
Medium-duty	4 LANE 16 LANE	Unimproved dirt

U.S. Route (thick red line)  
State Route (thin red line)



HARRISON, MONT.  
N4530-W1145/15

U.S.G.S.  
FILE COPY  
TOPOGRAPHIC DIVISION

1950  
AMS 3675 III—SERIES V794  
JAN 26 1971

THIS MAP COMPLIES WITH NATIONAL MAP ACCURACY STANDARDS  
FOR SALE BY U.S. GEOLOGICAL SURVEY, DENVER, COLORADO 80225 OR WASHINGTON, D. C. 20242  
A FOLDER DESCRIBING TOPOGRAPHIC MAPS AND SYMBOLS IS AVAILABLE ON REQUEST

3575 I SE  
WHITE HALL  
1:24,000

3675 I  
THREE FORKS

3574 NE  
COPPER MTN.  
1:24,000