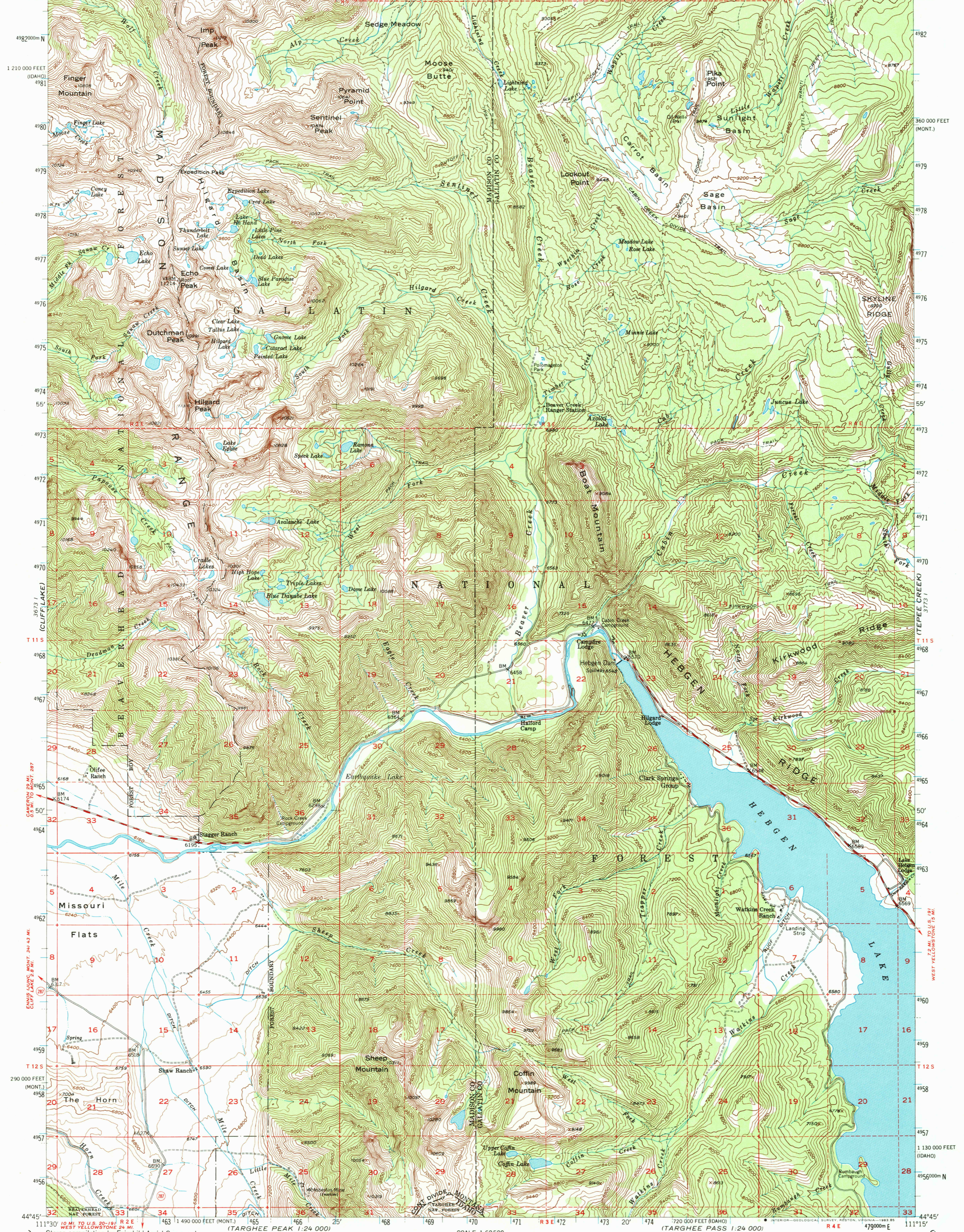
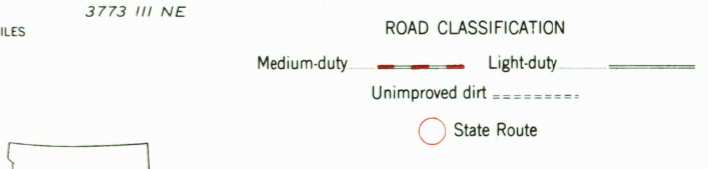
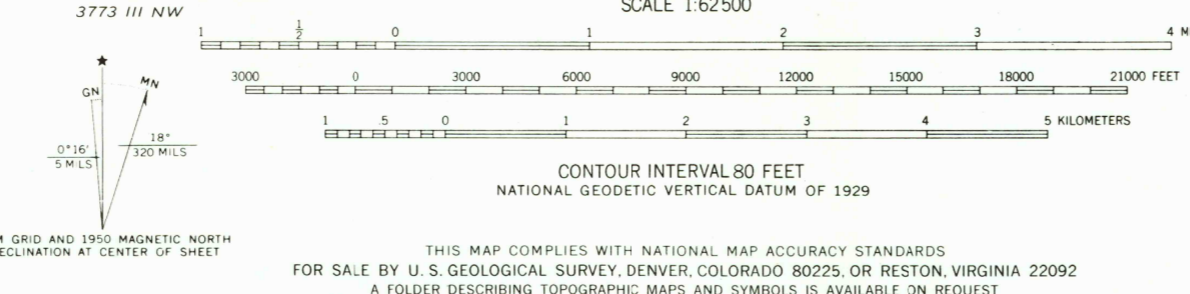


3672 II (CAMERON)
3673 II (CLIFF LAKE)
3674 II (UPPER RED ROCK LAKE)

3774 II (SPHINX MOUNTAIN)
3775 II (CROWN BUTTE)
3776 II (WEST YELLOWSTONE)



Stereo compilation by Fairchild Aerial Surveys, Inc. for the Bureau of Reclamation. Field examination and publication by the Geological Survey as part of the Department of the Interior program for the development of the Missouri River Basin. Control by USGS and USC&GS. Topography from aerial photographs by stereoplanigraph methods 1948. Aerial photographs taken 1947. Field check 1950. Polyconic projection. 1927 North American datum. 10,000-foot grid based on Montana coordinate system, south zone and Idaho coordinate system, east zone. Dashed land lines indicate approximate locations. Unchecked elevations are shown in brown. 1000-meter Universal Transverse Mercator grid ticks, zone 12, shown in blue. There may be private inholdings within the boundaries of the National or State reservations shown on this map.



HEBGEN DAM, MONT.-IDAHO
N4445-W1115/15

1950
DMA 3773 IV-SERIES V794

THIS MAP COMPLIES WITH NATIONAL MAP ACCURACY STANDARDS
FOR SALE BY U.S. GEOLOGICAL SURVEY, DENVER, COLORADO 80225, OR RESTON, VIRGINIA 22092
A FOLDER DESCRIBING TOPOGRAPHIC MAPS AND SYMBOLS IS AVAILABLE ON REQUEST

To place on the predicted North American Datum 1983 move the projection lines 11 meters north and 63 meters east