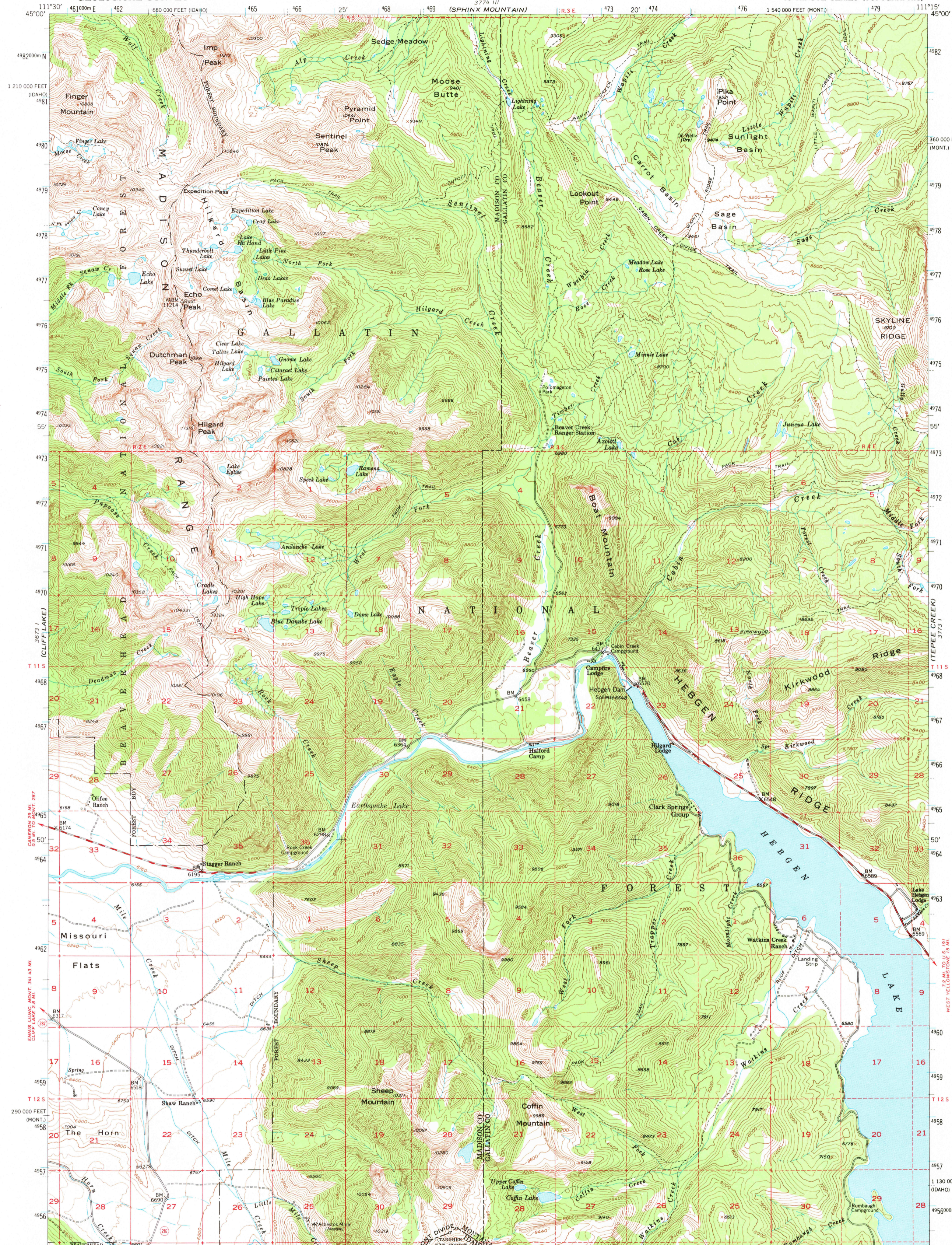
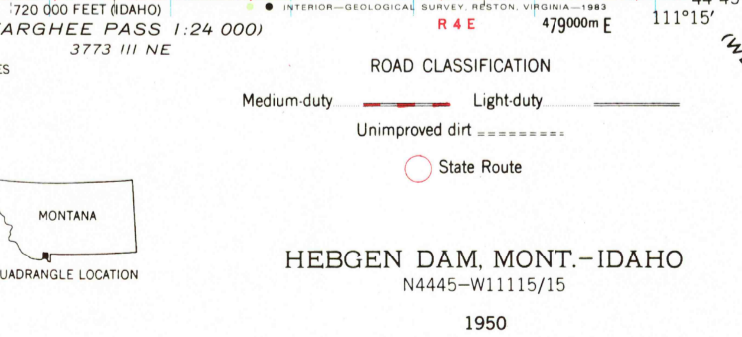
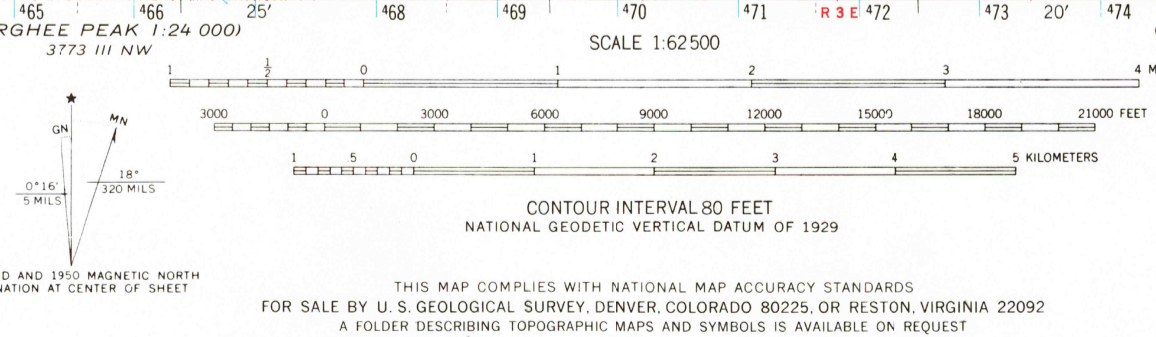


UNITED STATES  
DEPARTMENT OF THE INTERIOR  
GEOLOGICAL SURVEY

HEBGEN DAM QUADRANGLE  
MONTANA-IDAHO  
15 MINUTE SERIES (TOPOGRAPHIC)



Stereo compilation by Fairchild Aerial Surveys, Inc. for the Bureau of Reclamation  
Field examination and publication by the Geological Survey as part of the Department of the Interior program for the development of the Missouri River Basin  
Control by USGS and USCGS  
Topography from aerial photographs by stereoplano-graph methods 1948. Aerial photographs taken 1947. Field check 1950  
Polyconic projection. 1927 North American datum  
10,000-foot grid based on Montana coordinate system, south zone and Idaho coordinate system, east zone  
Dashed land lines indicate approximate locations  
Unchecked elevations are shown in brown  
1000-meter Universal Transverse Mercator grid ticks, zone 12, shown in blue  
There may be private inholdings within the boundaries of the National or State reservations shown on this map



UPPER REC ROCK LAKE  
3673 III

JUL 27 1983  
WEST YELLOWSTONE

RETURN TO:  
JUSGS NMD HISTORICAL MAP ARCHIVES