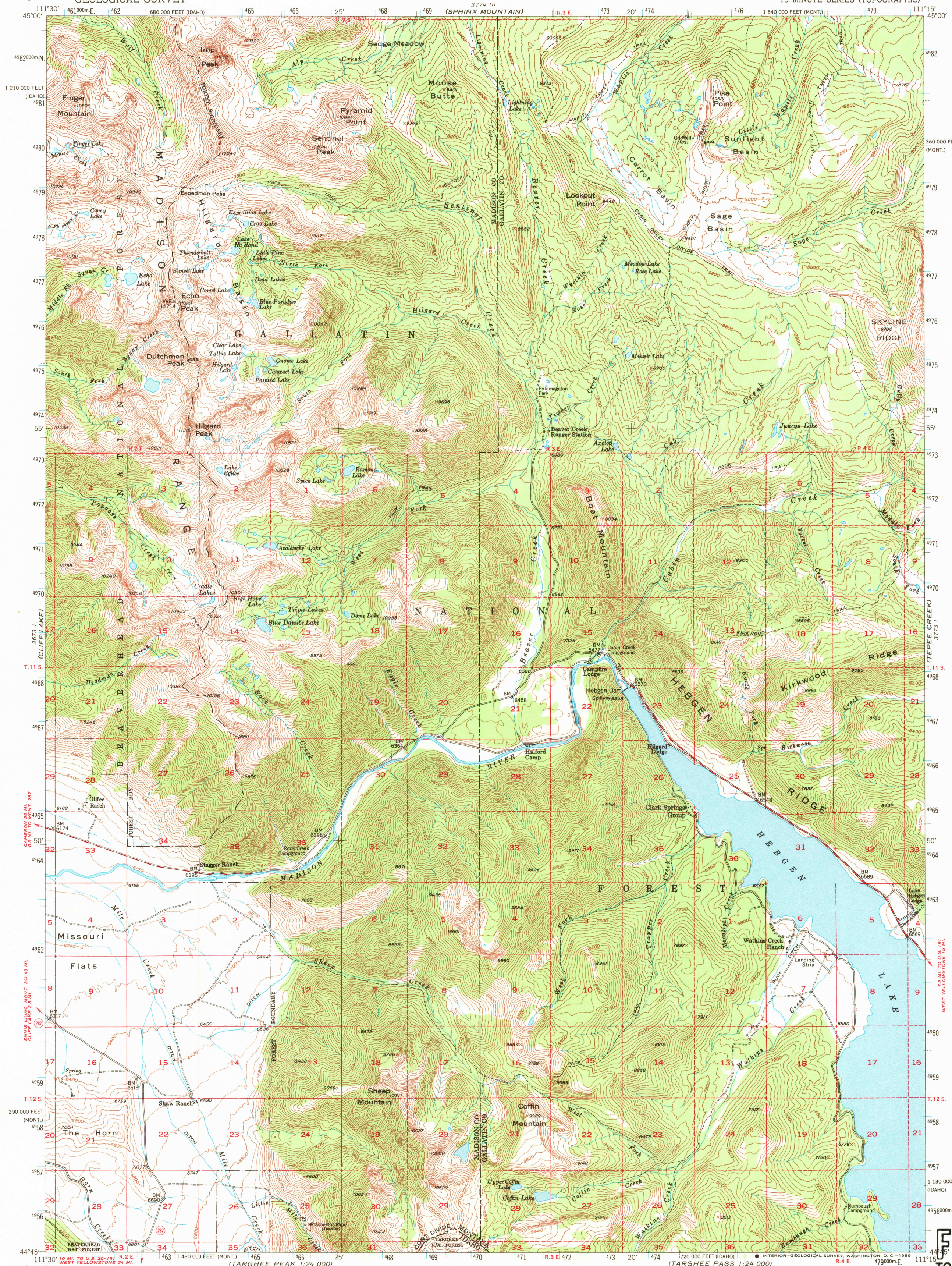
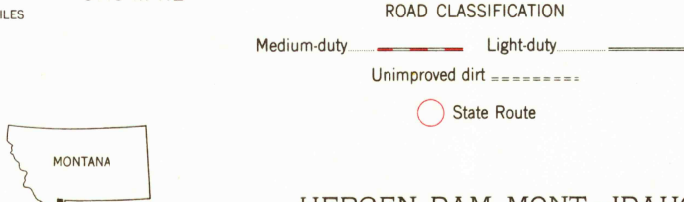
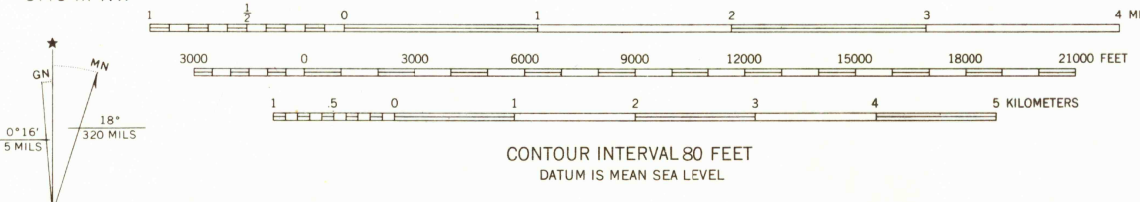


UNITED STATES
DEPARTMENT OF THE INTERIOR
GEOLOGICAL SURVEY

HEBGEN DAM QUADRANGLE
MONTANA-IDAHO
15 MINUTE SERIES (TOPOGRAPHIC)



Stereo compilation by Fairchild Aerial Surveys, Inc. for the Bureau of Reclamation. Field examination and publication by the Geological Survey as part of the Department of the Interior program for the development of the Missouri River Basin Control by USGS and USC&GS. Topography from aerial photographs by stereoplanograph methods 1948. Aerial photographs taken 1947. Field check 1950. Polyconic projection. 1927 North American datum. 10,000-foot grid based on Montana coordinate system, south zone and Idaho coordinate system, east zone. Dashed land lines indicate approximate locations. Unchecked elevations are shown in brown. 1000-meter Universal Transverse Mercator grid ticks, zone 12, shown in blue.



HEBGEN DAM, MONT.-IDAHO
N4445-W11115/15

1950
AMS 3773 IV-SERIES V794

THIS MAP COMPLIES WITH NATIONAL MAP ACCURACY STANDARDS
FOR SALE BY U.S. GEOLOGICAL SURVEY, DENVER, COLORADO 80225 OR WASHINGTON, D. C. 20242
COPIES OF THE ORIGINAL DRAWINGS WITH 20 FOOT CONTOURS AVAILABLE
A FOLDER DESCRIBING TOPOGRAPHIC MAPS AND SYMBOLS IS AVAILABLE ON REQUEST

USGS
Historical File
Topographic Division
U.S.G.S.
FILE COPY
TOPOGRAPHIC DIVISION

4750
JUL 7 1969