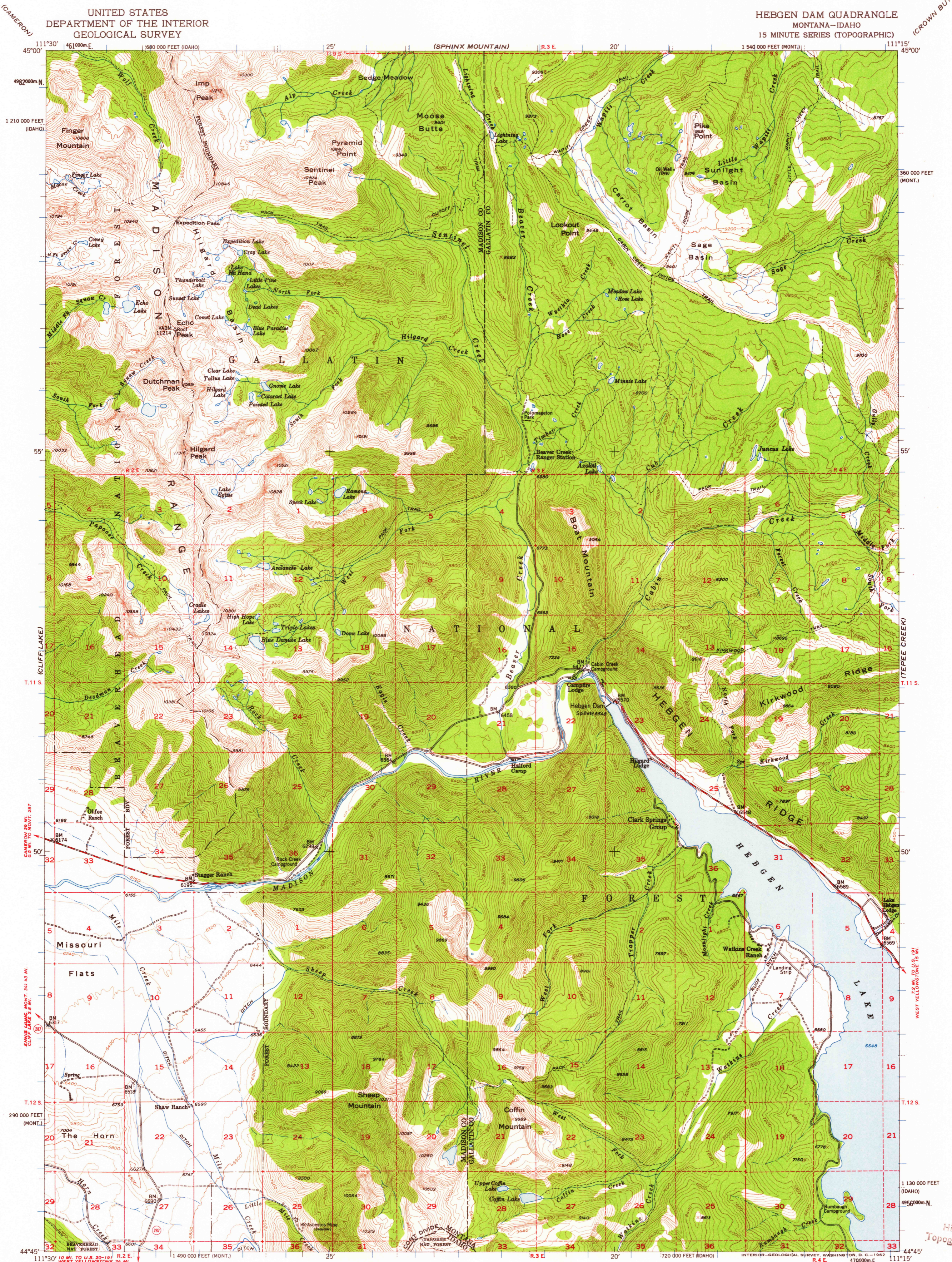
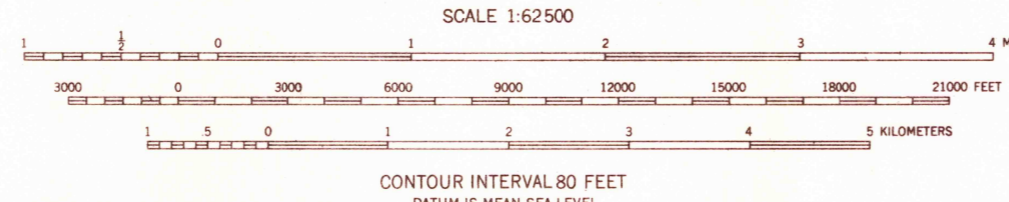


UNITED STATES  
DEPARTMENT OF THE INTERIOR  
GEOLOGICAL SURVEY

HEBGEN DAM QUADRANGLE  
MONTANA-IDAHO  
15 MINUTE SERIES (TOPOGRAPHIC)



Stereo compilation by Fairchild Aerial Surveys, Inc. for the Bureau of Reclamation. Field examination and publication by the Geological Survey as part of the Department of the Interior program for the development of the Missouri River Basin Control by USGS and USCS&GS. Topography from aerial photographs by stereoplanigraph methods 1948. Aerial photographs taken 1947. Field check 1950. Polyconic projection. 1927 North American datum. 10,000-foot grid based on Montana coordinate system, south zone and Idaho coordinate system, east zone. Dashed land lines indicate approximate locations. Unchecked elevations are shown in brown. 1000-meter Universal Transverse Mercator grid ticks, zone 12, shown in blue.



ROAD CLASSIFICATION

Medium-duty	Light-duty
Unimproved dirt	State Route



HEBGEN DAM, MONT.-IDAHO S.S.  
N4445-W11115/15  
1950

FILE COPY  
TOPOGRAPHIC DIVISION

3080

JUL 23 1962