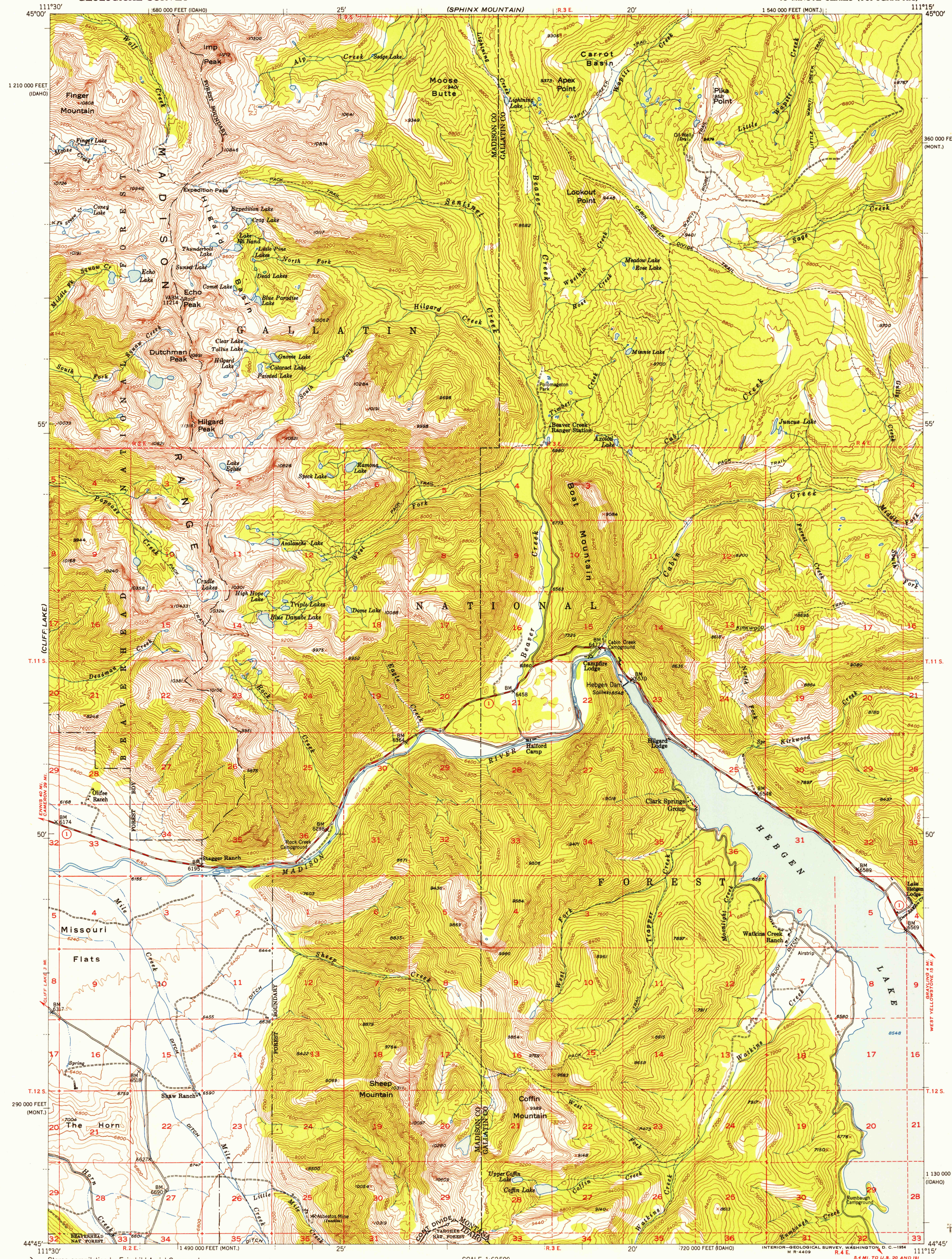


U.S.G.S.
FILE COPY
TOPOGRAPHIC DIVISION



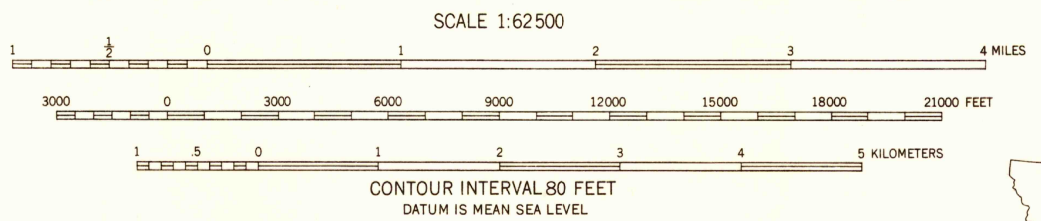
CLIFF LAKE 3 MI.

MISSOURI FLATS

THE HORN

UPPER RED ROCK LAKE

Stereo compilation by Fairchild Aerial Surveys, Inc. for the Bureau of Reclamation. Field examination and publication by the Geological Survey as part of the Department of the Interior program for the development of the Missouri River Basin. Control by USGS and USC&GS. Topography from aerial photographs by stereoplanigraph methods 1948. Aerial photographs taken 1947. Field check 1950. Polyconic projection. 1927 North American datum. 10,000-foot grid based on Montana coordinate system, south zone and Idaho coordinate system, east zone. Dashed land lines indicate approximate locations. Unchecked elevations are shown in brown.



ROAD CLASSIFICATION
Heavy-duty 4 LANE 16 LANE Light-duty
Medium-duty 4 LANE 16 LANE Unimproved dirt
U.S. Route State Route

HEBGEN DAM, MONT.-IDAHO
N4445-W11115/15

USGS
Historical File
Topographic Division

U.S.G.S.
FILE COPY
TOPOGRAPHIC DIVISION

FOR SALE BY U. S. GEOLOGICAL SURVEY, FEDERAL CENTER, DENVER, COLORADO OR WASHINGTON 25, D. C.
COPIES OF THE ORIGINAL DRAWINGS WITH 20 FOOT CONTOURS AVAILABLE
A FOLDER DESCRIBING TOPOGRAPHIC MAPS AND SYMBOLS IS AVAILABLE ON REQUEST

1950

SEP 10 1954

2660