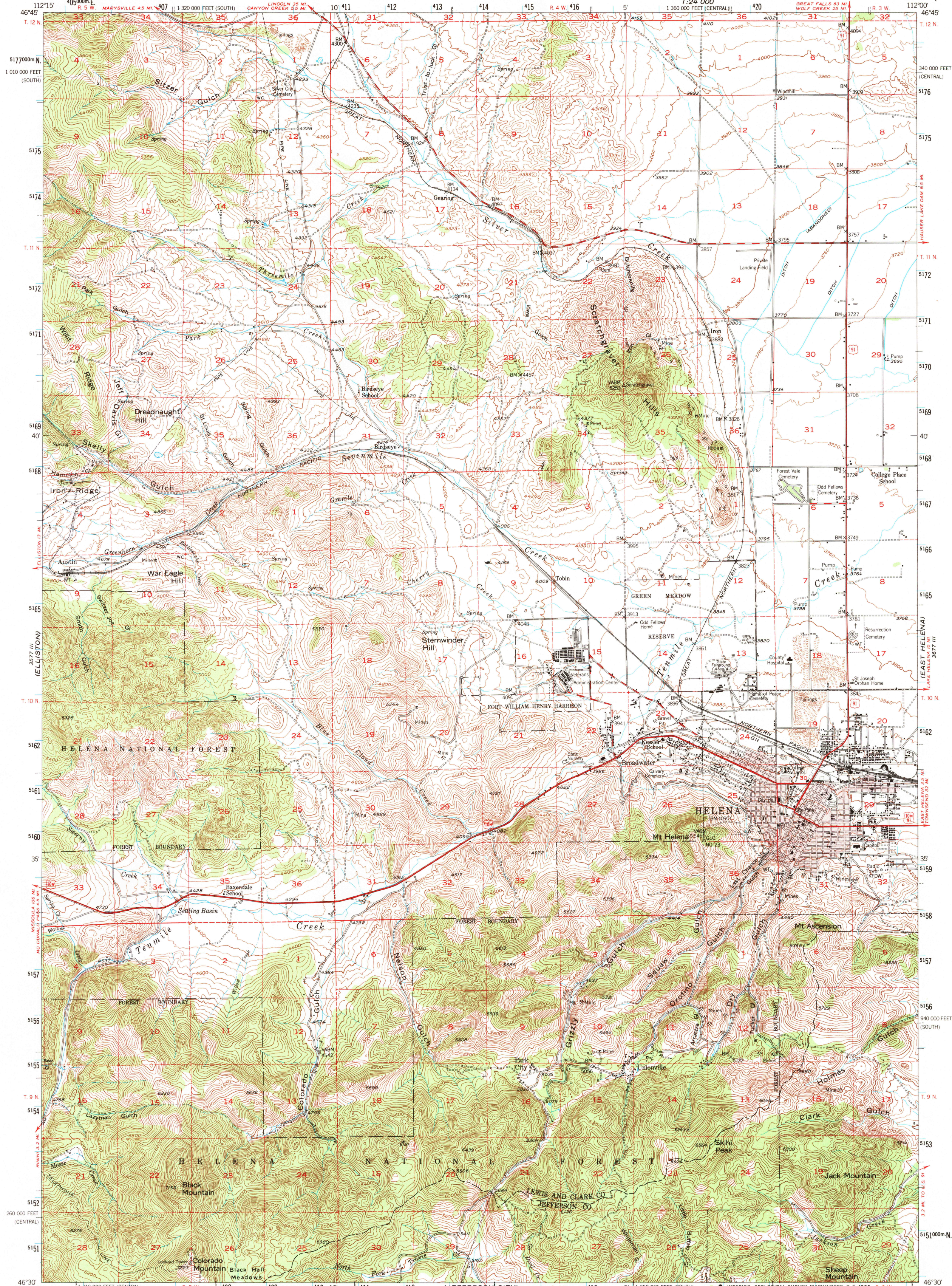
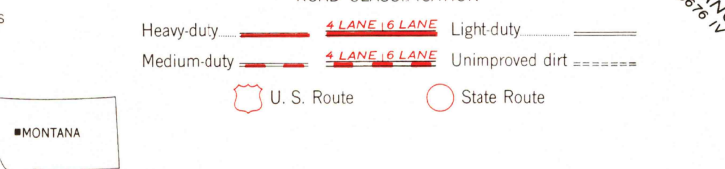
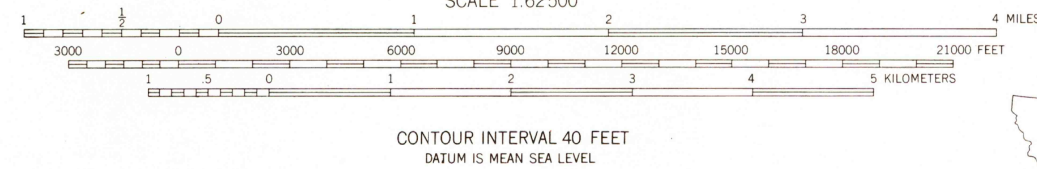
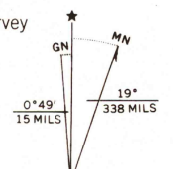


UNITED STATES
DEPARTMENT OF THE INTERIOR
GEOLOGICAL SURVEY

HELENA QUADRANGLE
MONTANA
15 MINUTE SERIES (TOPOGRAPHIC)



Stereo compilation by Fairchild Aerial Surveys, Inc. for the Bureau of Reclamation. Field examination and publication by the Geological Survey as part of the Department of the Interior Program for the development of the Missouri River Basin. Control by USGS and USC&GS. Topography from aerial photographs by stereoplanigraph methods 1948; Aerial photographs taken 1947; Field check 1950. Polyconic projection. 1927 North American datum 10,000-foot grid based on Montana coordinate system, south and central zones. Red tint indicates areas in which only landmark buildings are shown. Dashed land lines indicate approximate locations. All mining features on this map are inactive. Unchecked elevations are shown in brown. 1000-meter Universal Transverse Mercator grid ticks, zone 12, shown in blue.



THIS MAP COMPLIES WITH NATIONAL MAP ACCURACY STANDARDS. THIS MAP IS AVAILABLE WITH OR WITHOUT SHADED RELIEF OVERPRINT. FOR SALE BY U. S. GEOLOGICAL SURVEY, DENVER, COLORADO 80225 OR WASHINGTON, D. C. 20242. A FOLDER DESCRIBING TOPOGRAPHIC MAPS AND SYMBOLS IS AVAILABLE ON REQUEST.

HELENA, MONT.
N4630-W11200/15
1950
AMS 3577 II-SERIES V794

3577 II NW
UPPER
1:24,000

(CLANCY)
36° 10' N