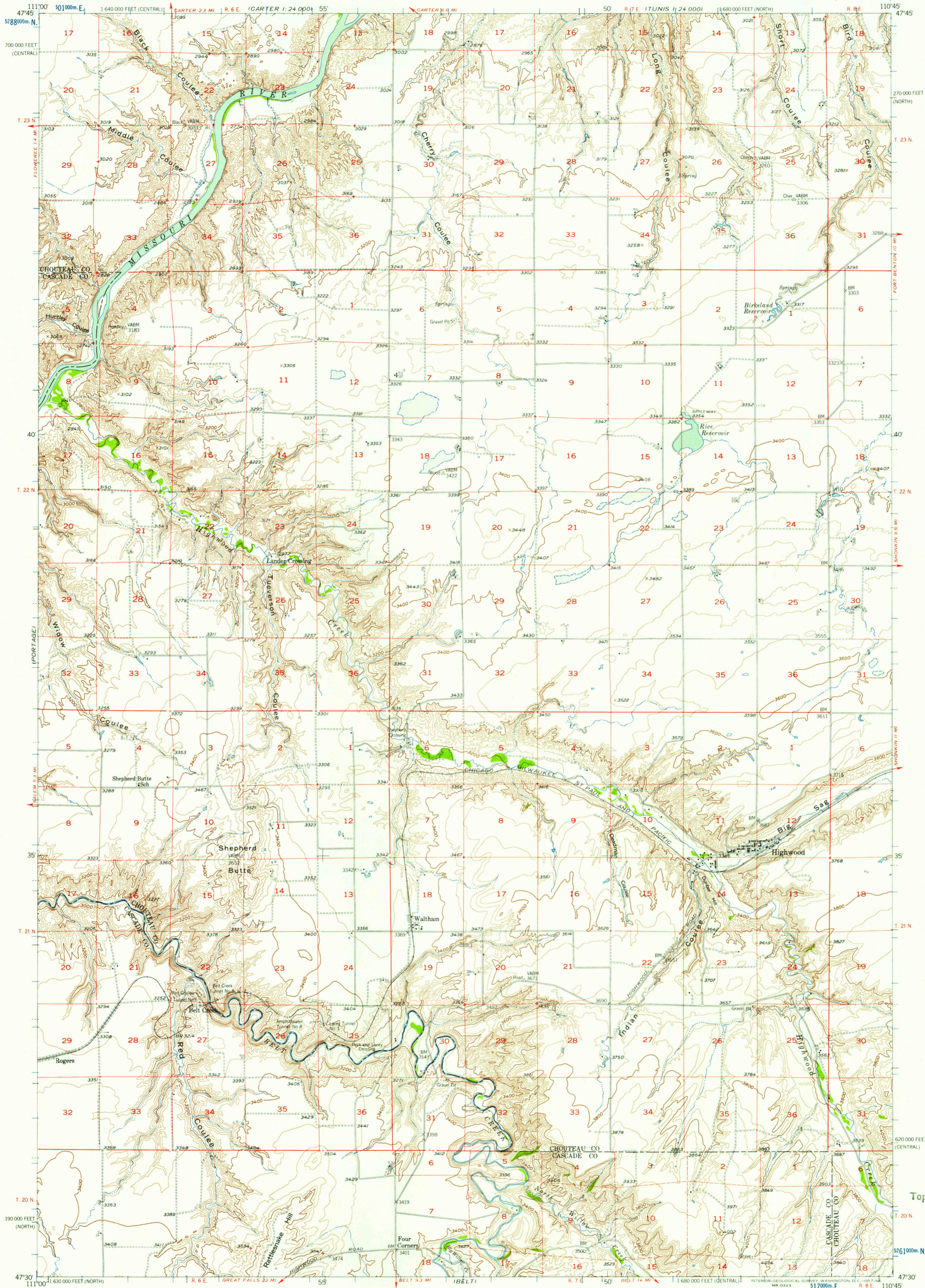


UNITED STATES
DEPARTMENT OF THE INTERIOR
GEOLOGICAL SURVEY

HIGHWOOD QUADRANGLE
MONTANA
15 MINUTE SERIES (TOPOGRAPHIC)

IDENT BRIDGE

FORT BENTON
1:24,000

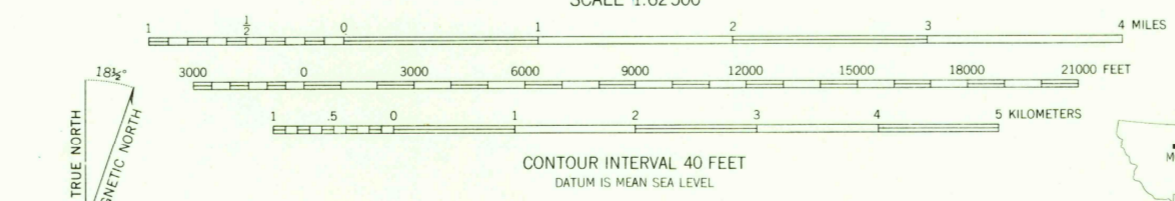


USGS
FILE COPY
TOPOGRAPHIC DIVISION

USGS
Historical File
Topographic Division

USGS
FILE COPY
TOPOGRAPHIC DIVISION

Mapped, edited, and published by the Geological Survey
Control by USGS and USC&GS
Topography from 1:24,000 scale maps of the Rice Reservoir,
Lander Crossing, and Waltham, 7.5 minute quadrangles,
surveyed 1954, and from aerial photographs by
multiplex methods. Aerial photographs taken 1954
Field check 1956.
Polyconic projection. 1927 North American datum
10,000-foot grid based on Montana coordinate system,
north and central zones
1000 meter Universal Transverse Mercator grid ticks,
zone 12, shown in blue
Dashed land lines indicate approximate locations
Land lines are omitted in T. 20 N., R. 6 E. because
of insufficient data. All recovered corners are shown



ROAD CLASSIFICATION
Light-duty ————— Unimproved dirt —————



HIGHWOOD, MONT.
N4730-W11045/15

FOR SALE BY U.S. GEOLOGICAL SURVEY, DENVER 2, COLORADO OR WASHINGTON 25, D.C.
A FOLDER DESCRIBING TOPOGRAPHIC MAPS AND SYMBOLS IS AVAILABLE ON REQUEST

OCT 24 1957

2080