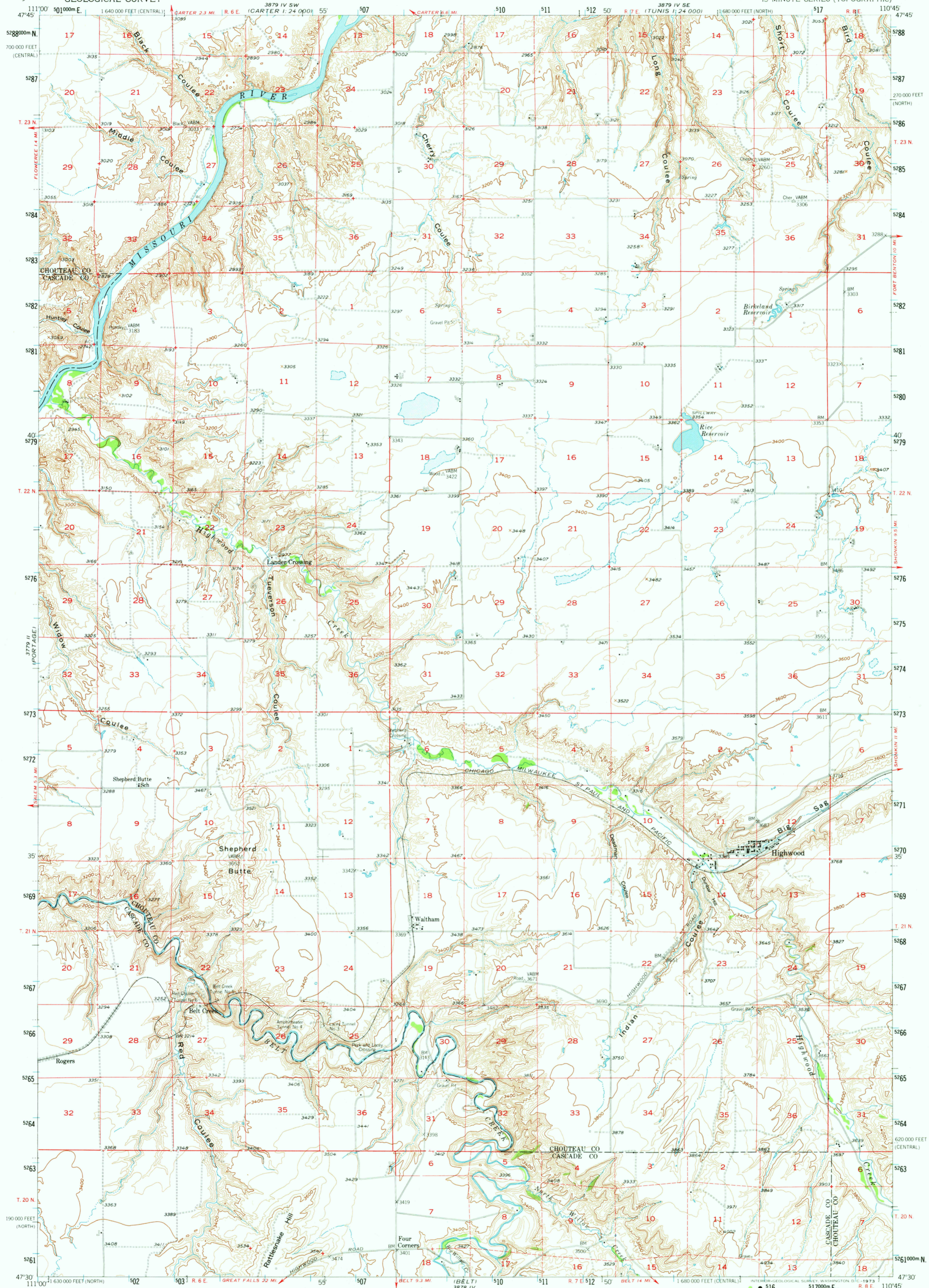
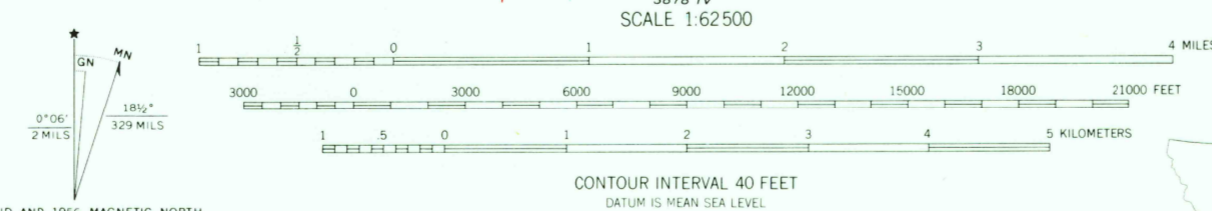


UNITED STATES
DEPARTMENT OF THE INTERIOR
GEOLOGICAL SURVEY

HIGHWOOD QUADRANGLE
MONTANA
15 MINUTE SERIES (TOPOGRAPHIC)



Maped, edited, and published by the Geological Survey
Control by USGS and USC&GS
Topography from 1:24,000 scale maps of the Rice Reservoir,
Lander Crossing, and Waltham, 7.5 minute quadrangles,
surveyed 1954; and from aerial photographs by
multiplex methods. Aerial photographs taken 1954
Field check 1956.
Polyconic projection. 1927 North American datum.
10,000-foot grid based on Montana coordinate system,
north and central zones
1000-meter Universal Transverse Mercator grid ticks,
zone 12, shown in blue
Dashed land lines indicate approximate locations
Land lines are omitted in T. 20N. R. 6E. because
of insufficient data. All recovered corners are shown



ROAD CLASSIFICATION
Light-duty ————— Unimproved dirt - - - - -
The north half and southwest quarter of this area also covered
by 1:24,000 scale maps of Rice Reservoir, Lander Crossing,
and Waltham, 7.5 minute quadrangles, surveyed 1954

QUADRANGLE LOCATION
MONTANA

HIGHWOOD, MONT.
N4730-W11045/15
1956
AMS 3879 III-SERIES V794

THIS MAP COMPLIES WITH NATIONAL MAP ACCURACY STANDARDS
FOR SALE BY U. S. GEOLOGICAL SURVEY, DENVER, COLORADO 80225 OR WASHINGTON, D. C. 20242
A FOLDER DESCRIBING TOPOGRAPHIC MAPS AND SYMBOLS IS AVAILABLE ON REQUEST