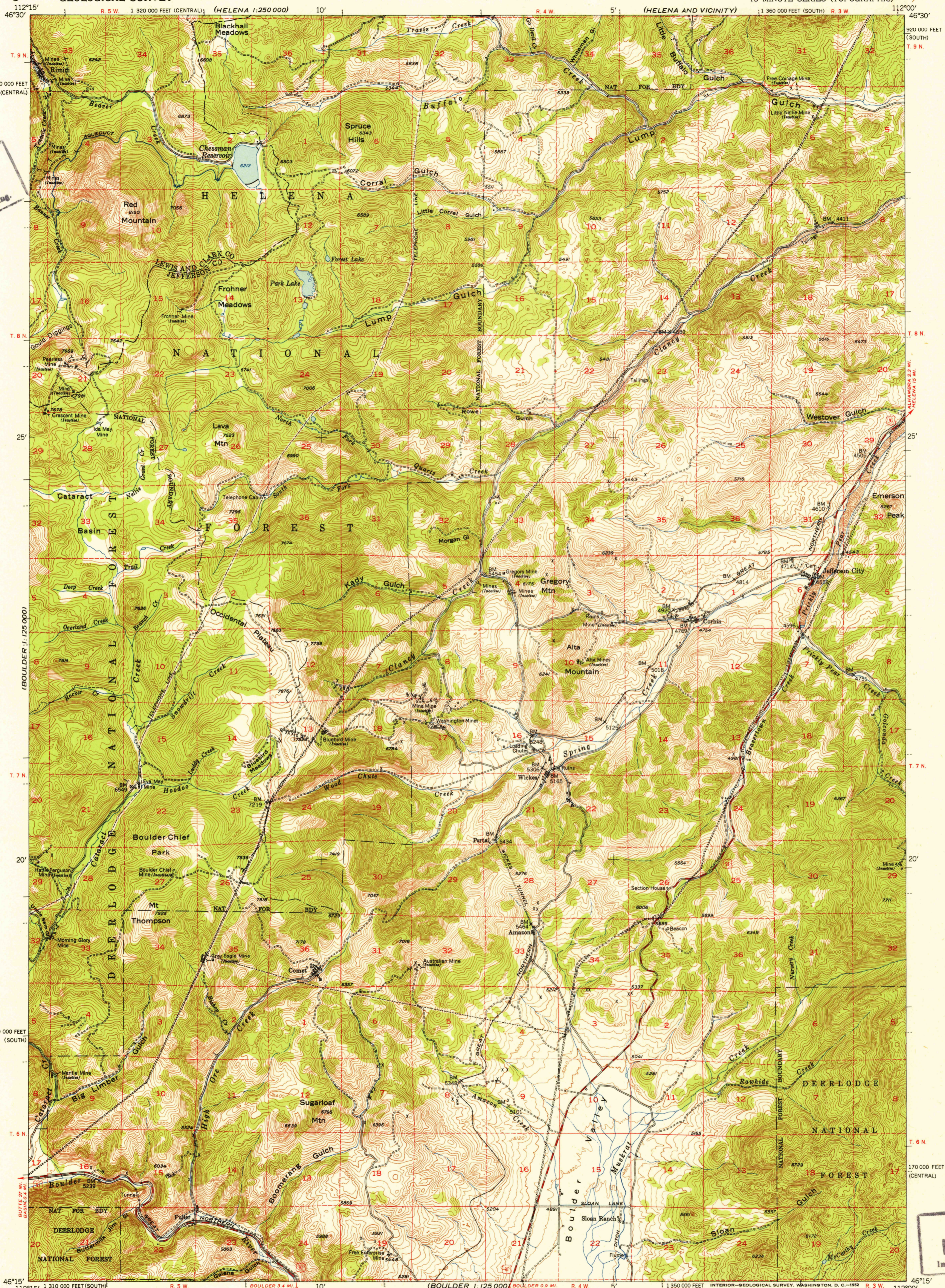


UNITED STATES
DEPARTMENT OF THE INTERIOR
GEOLOGICAL SURVEY

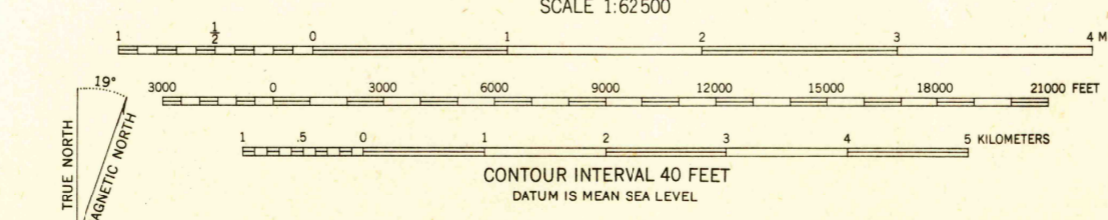
JEFFERSON CITY QUADRANGLE
MONTANA
15 MINUTE SERIES (TOPOGRAPHIC)



U.S.G.S.
FILE COPY
Inspection and Editing.

U.S.G.S.
FILE COPY
Inspection and Editing.

Stereo compilation by Fairchild Aerial Surveys, Inc. for the Bureau of Reclamation. Field examination and publication by the Geological Survey as part of the Department of the Interior program for the development of the Missouri River Basin. Control by USGS and USC&GS. Topography from aerial photographs by photogrammetric methods 1948. Aerial photographs taken 1947. Field check 1950. Polyconic projection. 1927 North American datum 10,000-foot grid based on Montana coordinate system south and central zones. Dashed land lines indicate approximate location.



ROAD CLASSIFICATION

Heavy-duty	4 LANE 16 LANE	Light-duty
Medium-duty	4 LANE 16 LANE	Unimproved dirt
	U. S. Route	State Route

JEFFERSON CITY, MONT.
N4615-W1200/15
1950

FOR SALE BY U. S. GEOLOGICAL SURVEY, FEDERAL CENTER, DENVER, COLORADO OR WASHINGTON 25, D. C.
A FOLDER DESCRIBING TOPOGRAPHIC MAPS AND SYMBOLS IS AVAILABLE ON REQUEST

USGS
Historical File
Topographic Division

NOV 24 1952
2095