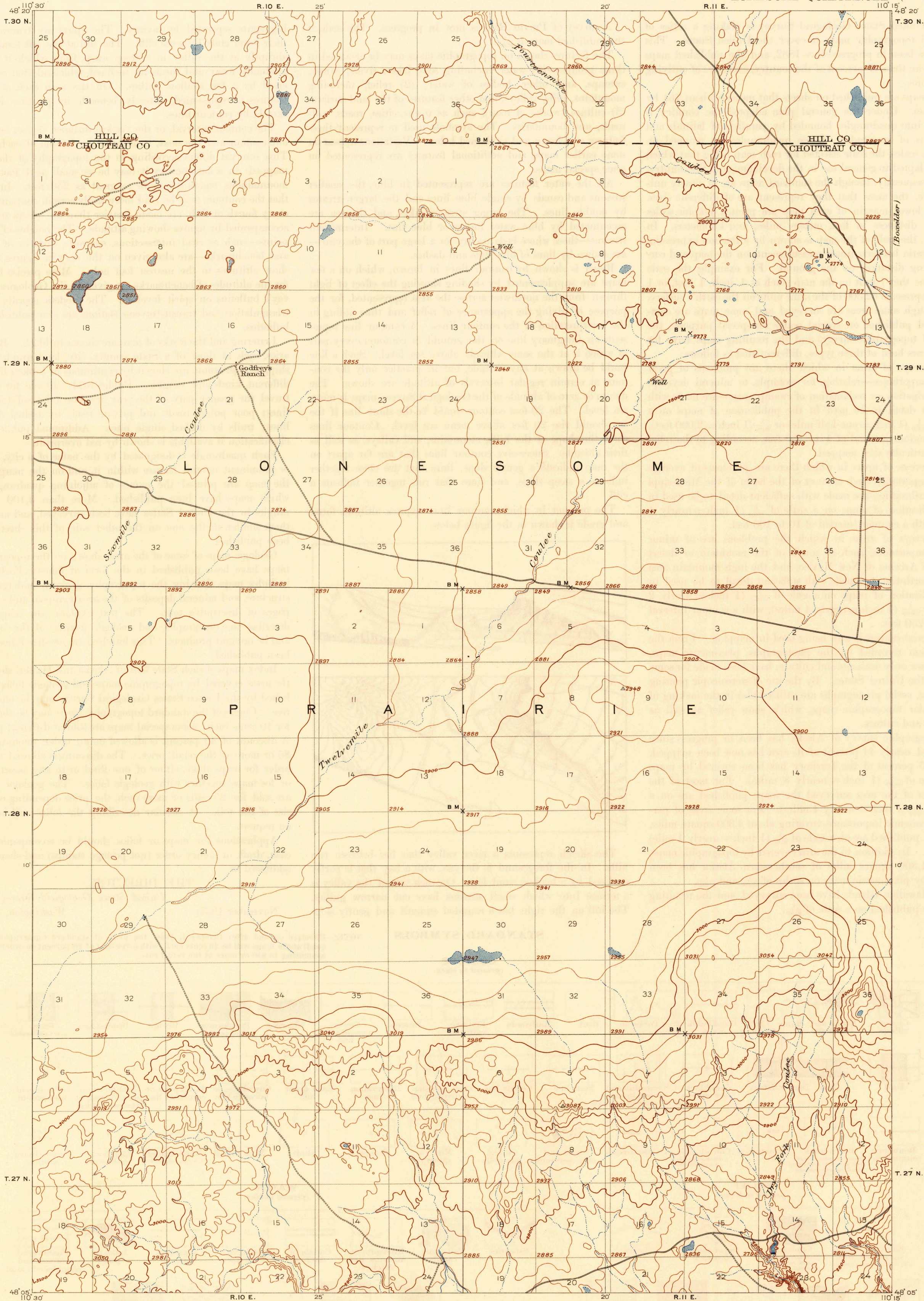
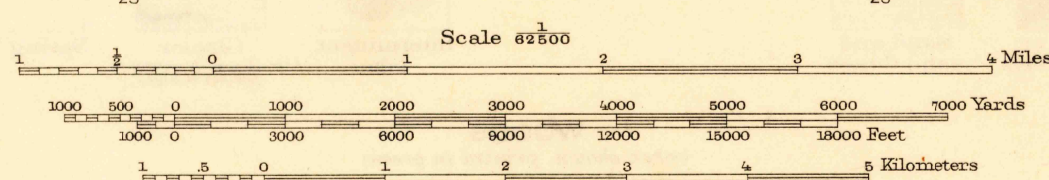
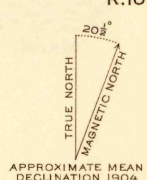


UNITED STATES  
DEPARTMENT OF THE INTERIOR  
GEOLOGICAL SURVEY

MONTANA  
LONESOME QUADRANGLE



E. M. Douglas, Geographer,  
H. L. Baldwin, Jr., in charge of section.  
Topography by Wm. Stranahan.  
Triangulation by Fred McLaughlin.  
Surveyed in 1904.



Contour interval 20 feet  
Datum is mean sea level

Edition of 1906  
reprinted 1949  
Polyconic Projection.

LONESOME, MONT.  
N4805-W11015/15