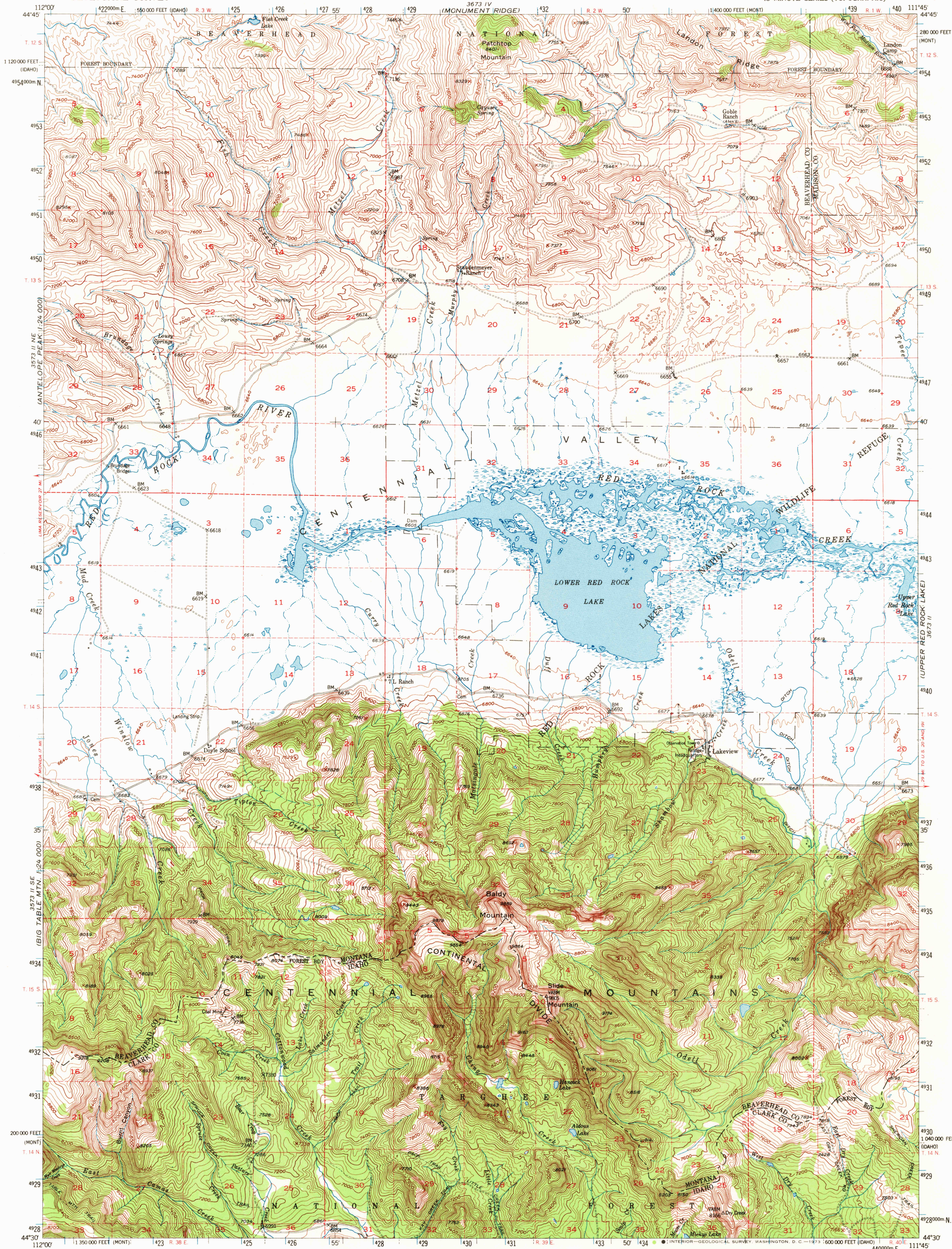


UNITED STATES  
DEPARTMENT OF THE INTERIOR  
GEOLOGICAL SURVEY

LOWER RED ROCK LAKE QUADRANGLE  
MONTANA-IDAHO  
15 MINUTE SERIES (TOPOGRAPHIC)



Maped, edited, and published by the Geological Survey

Control by USGS and USC&GS

Topography from aerial photographs by photogrammetric methods

Aerial photographs taken 1947. Field check 1950

Polycyclic projection, 1927 North American datum

10,000-foot grid based on Montana coordinate system,

south zone and Idaho coordinate system, east zone

Dashed land lines indicate approximate locations

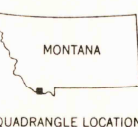
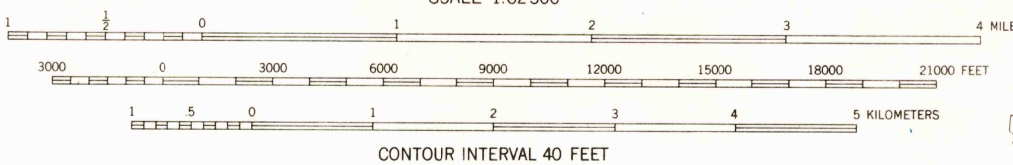
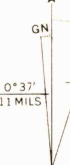
Land lines surveyed in T. 12 S.-R. 1 W., R. 2 W., and R. 3 W.

T. 14 N.-R. 36 E., R. 39 E., and R. 40 E. are based on Boise Meridian

Unchecked elevations are shown in brown

1000-meter Universal Transverse Mercator grid ticks,

zone 12, shown in blue



ROAD CLASSIFICATION  
1963  
Light-duty ————— Unimproved dirt —————

LOWER RED ROCK LAKE, MONT.-IDAHO  
N4430-W1145/15

1950

AMS 3673 III-SERIES V794

USGS  
Historical File  
Topographic Division

JUN 26 1973

2235