

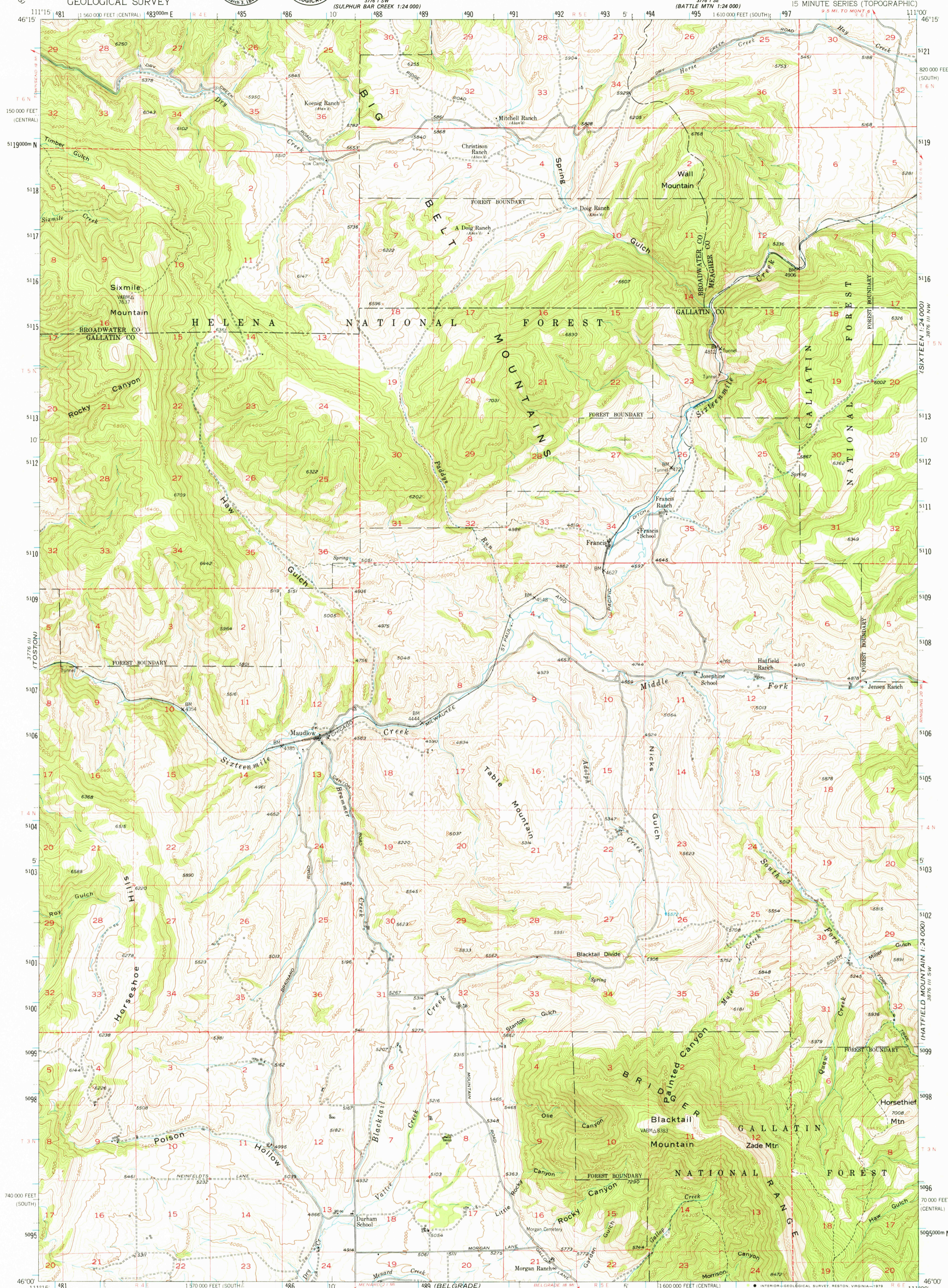
DUICK CREEK PASS
3776 W
3775 W

UNITED STATES
DEPARTMENT OF THE INTERIOR
GEOLOGICAL SURVEY

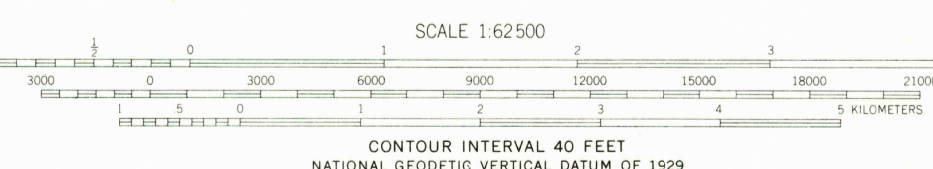


MAUDLOW QUADRANGLE
MONTANA
15 MINUTE SERIES (TOPOGRAPHIC)

3776 W
3775 W
1:24,000
1:24,000
1:24,000
1:24,000



Stereo compilation by Fairchild Aerial Surveys, Inc. for the Bureau of Reclamation. Field examination and publication by the Geological Survey as part of the Department of the Interior Program for the development of the Missouri River Basin Control by USGS, USC&GS, and USFS. Topography from aerial photographs by stereoplanograph methods. Aerial photographs taken 1947. Field check 1949. Polyconic projection. 1927 North American datum. 10,000-foot grid based on Montana coordinate system, central and south zones. Dashed land lines indicate approximate locations. Unchecked elevations are shown in brown. 1000-meter Universal Transverse Mercator grid ticks, zone 12, shown in blue. There may be private inholdings within the boundaries of the National or State reservations shown on this map.



ROAD CLASSIFICATION

Heavy-duty	4 LANE 6 LANE	Light-duty
Medium-duty	4 LANE 6 LANE	Unimproved dirt
U.S. Route		State Route

MAUDLOW, MONT.
N4600-W11100/15
1949
DMA 3776 II-SERIES V794

1200
DEC 10 1979

THIS MAP COMPLIES WITH NATIONAL MAP ACCURACY STANDARDS FOR SALE BY U.S. GEOLOGICAL SURVEY, DENVER, COLORADO 80225, OR RESTON, VIRGINIA 22092. A FOLDER DESCRIBING TOPOGRAPHIC MAPS AND SYMBOLS IS AVAILABLE ON REQUEST.

USGS
Historical File
Topographic Division