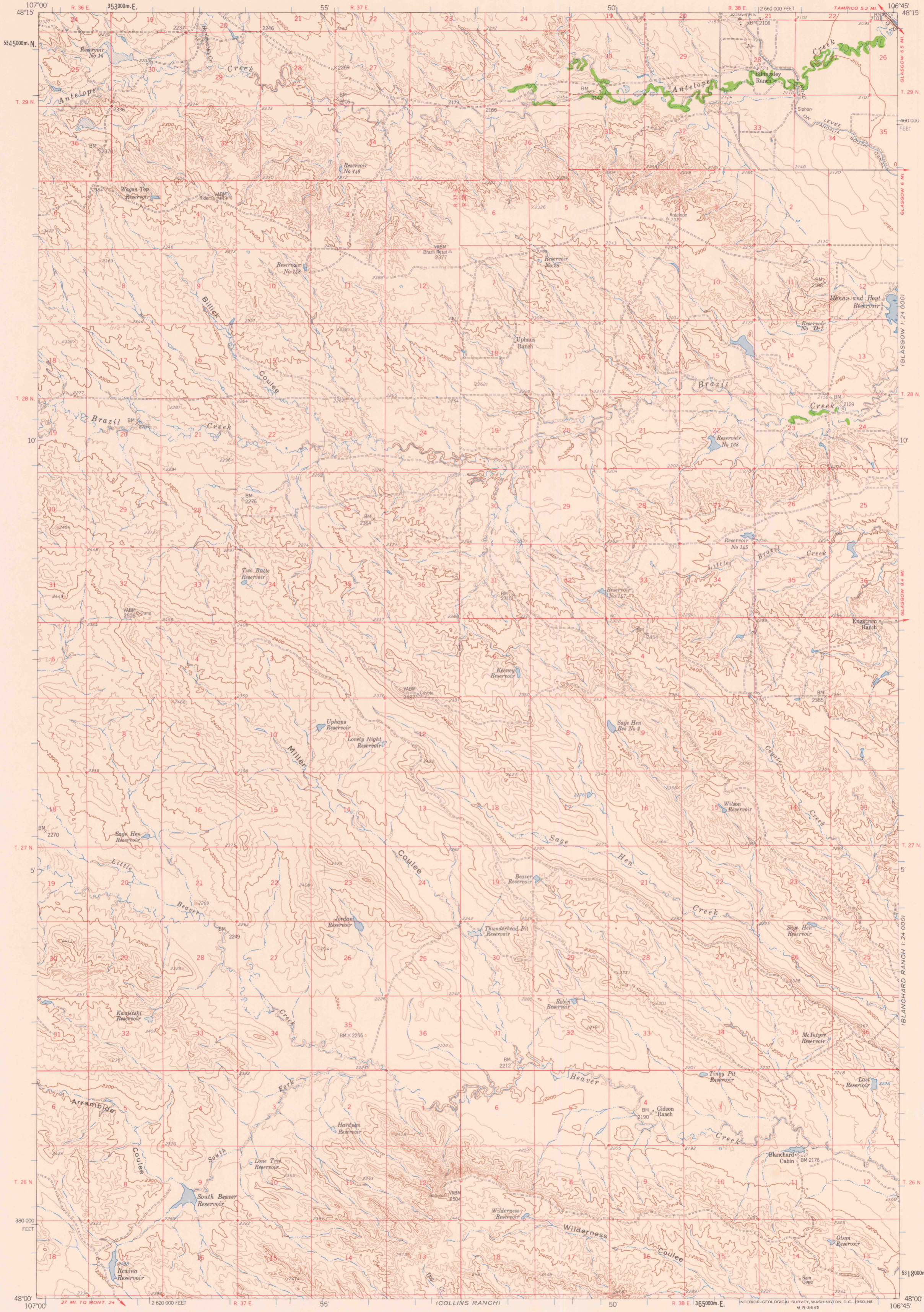
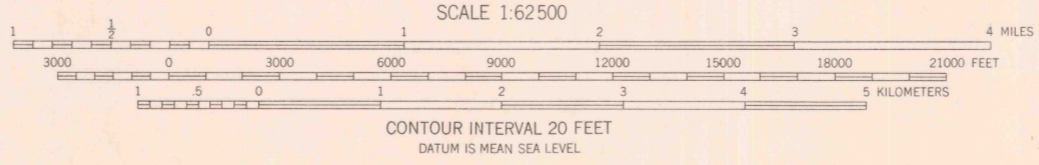
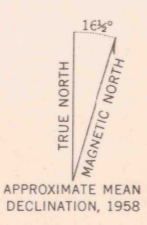


UNITED STATES
DEPARTMENT OF THE INTERIOR
GEOLOGICAL SURVEY

MILLER COULEE QUADRANGLE
MONTANA-VALLEY CO.
15 MINUTE SERIES (TOPOGRAPHIC)



Mapped, edited, and published by the Geological Survey as part of the Department of the Interior program for the development of the Missouri River Basin Control by USGS and USC&GS
Topography from 1:24 000-scale maps of Engstrom Ranch and Billick Coulee 7.5 minute quadrangles, surveyed 1958; and from aerial photography by photogrammetric methods
Aerial photographs taken 1956. Field check 1958
Polyconic projection. 1927 North American datum 10,000-foot grid based on Montana coordinate system, north zone
1000-meter Universal Transverse Mercator grid ticks, zone 13, shown in blue



ROAD CLASSIFICATION
Light-duty ——— Unimproved dirt - - - - -

The north half of this map also covered by 1:24 000 scale maps of Engstrom Ranch and Billick Coulee 7.5 minute quadrangles, surveyed 1958
MILLER COULEE, MONT.
N4800-W10645/15

THIS MAP COMPLIES WITH NATIONAL MAP ACCURACY STANDARDS
FOR SALE BY U.S. GEOLOGICAL SURVEY, DENVER 25, COLORADO OR WASHINGTON 25, D.C.
A FOLDER DESCRIBING TOPOGRAPHIC MAPS AND SYMBOLS IS AVAILABLE ON REQUEST

1958