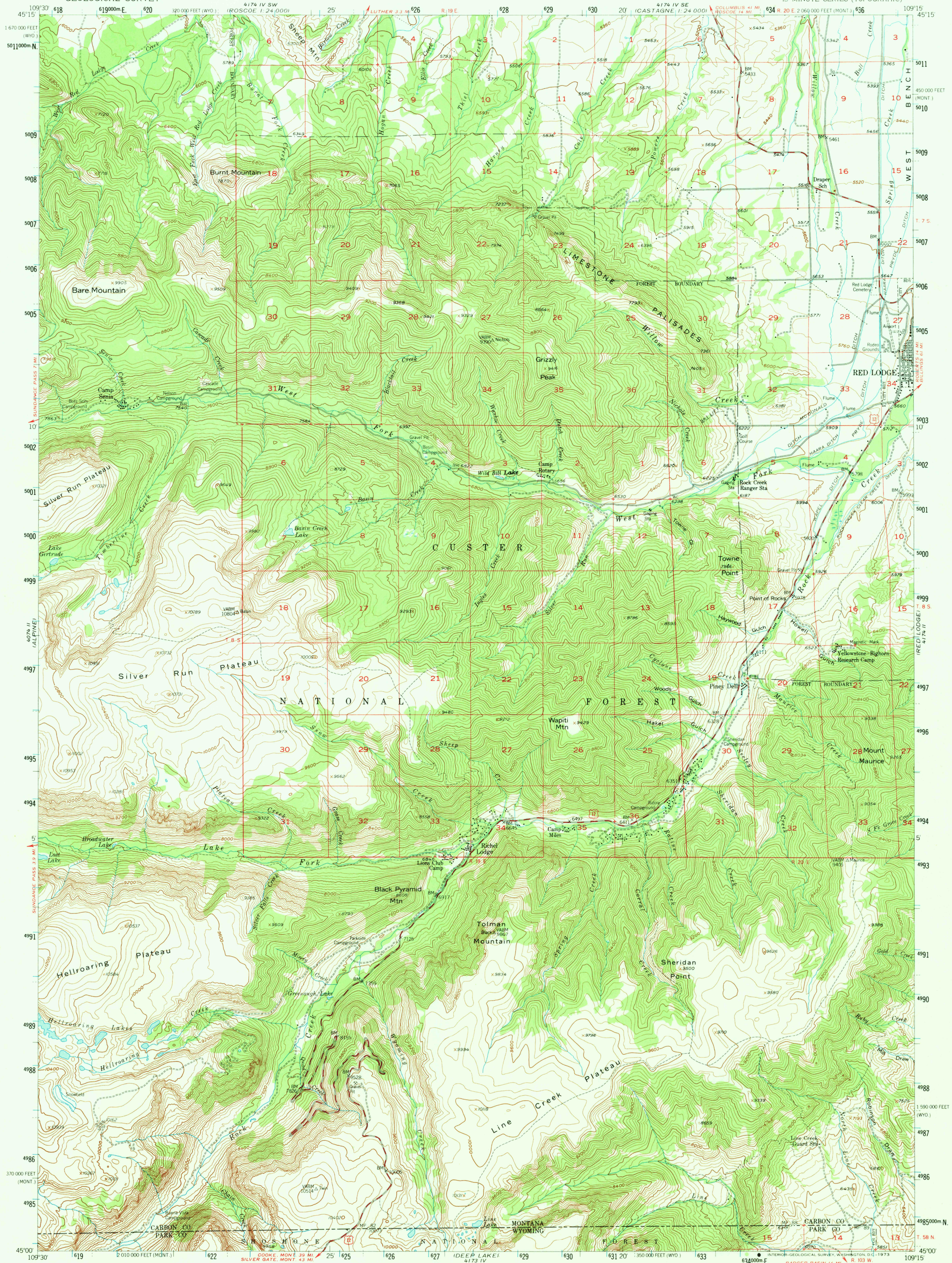
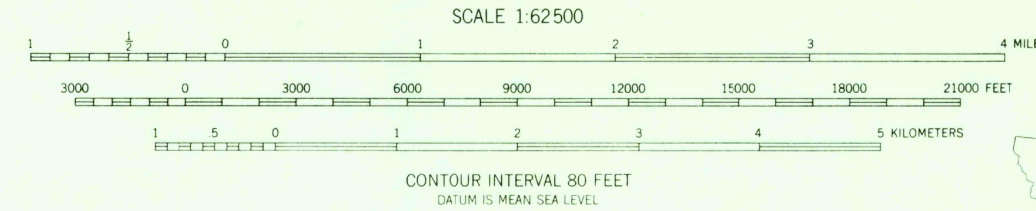


UNITED STATES
DEPARTMENT OF THE INTERIOR
GEOLOGICAL SURVEY

MOUNT MAURICE QUADRANGLE
MONTANA-WYOMING
15 MINUTE SERIES (TOPOGRAPHIC)



Maped, edited, and published by the Geological Survey as part of the Department of the Interior program for the development of the Missouri River Basin. Control by USGS and USC&GS. Topography from aerial photographs by multiplex methods. Aerial photographs taken 1951 and 1952. Field check 1956. Polyconic projection. 1927 North American datum. 10,000-foot grid based on Montana coordinate system, south zone and Wyoming coordinate system, west central zone. 1000-meter Universal Transverse Mercator grid ticks, zone 12, shown in blue. Land lines unsurveyed in T. 5 N., R. 18 E., and T. 9 S., R. 18, 19, and 20 E., based on the Principal Meridian, and unsurveyed in T. 58 N., R. 104 and 105 W., and in part of T. 58 N., R. 103 W., based on the Sixth Principal Meridian. Unchecked elevations are shown in brown.



ROAD CLASSIFICATION
 Medium duty ——— Light duty ———
 Unimproved dirt ——— U.S. Route ———



MOUNT MAURICE, MONT.-WYO.
N4500-W10915/15

1956
AMS 4174 III-SERIES V794

THIS MAP COMPLIES WITH NATIONAL MAP ACCURACY STANDARDS
 FOR SALE BY U. S. GEOLOGICAL SURVEY, DENVER, COLORADO 80225 OR WASHINGTON, D. C. 20242
 A FOLDER DESCRIBING TOPOGRAPHIC MAPS AND SYMBOLS IS AVAILABLE ON REQUEST

USGS
Topographic Division

JUL 5 1973

5285