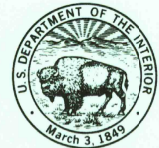


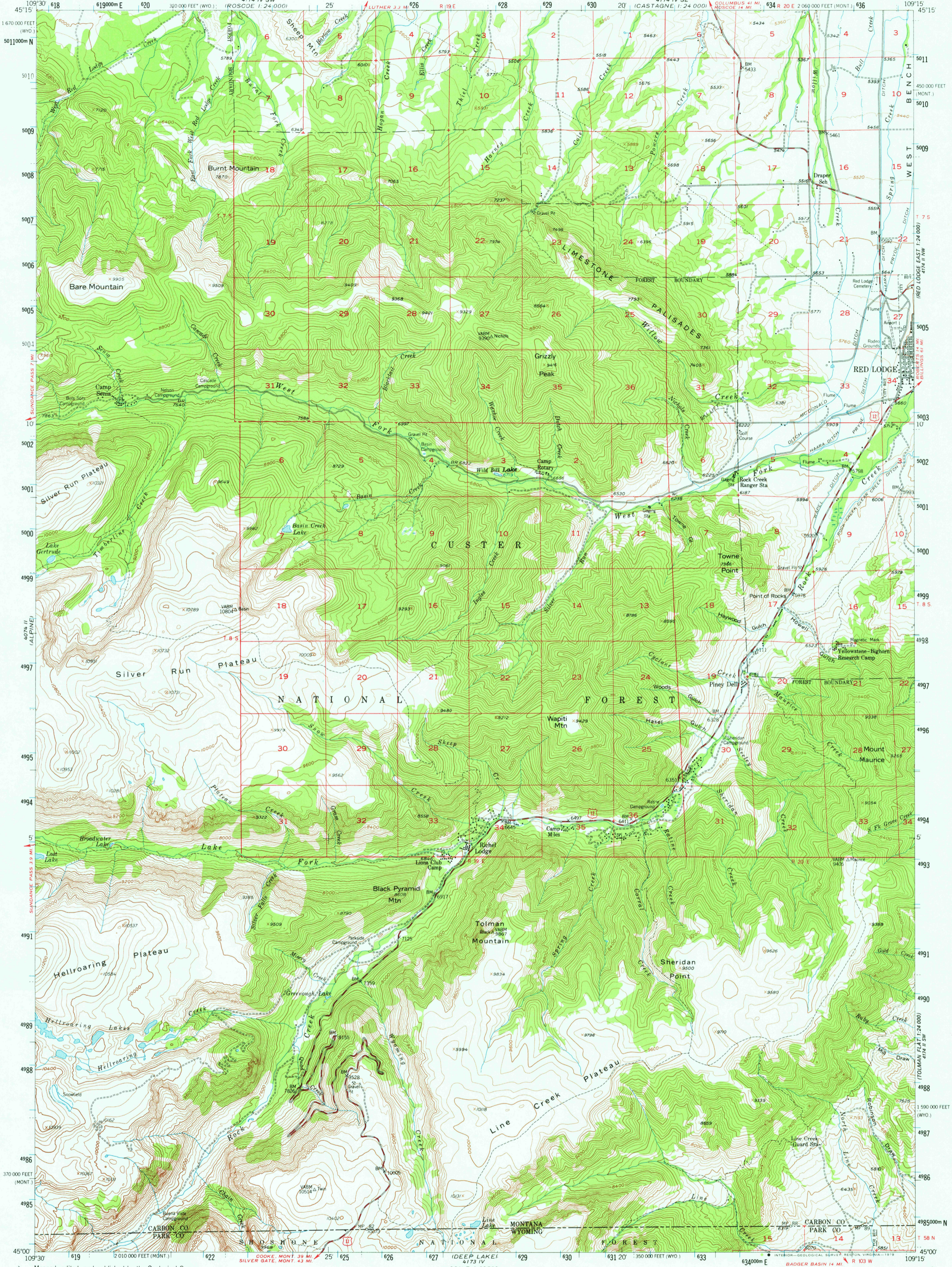
4074 SE
1:24,000

UNITED STATES
DEPARTMENT OF THE INTERIOR
GEOLOGICAL SURVEY

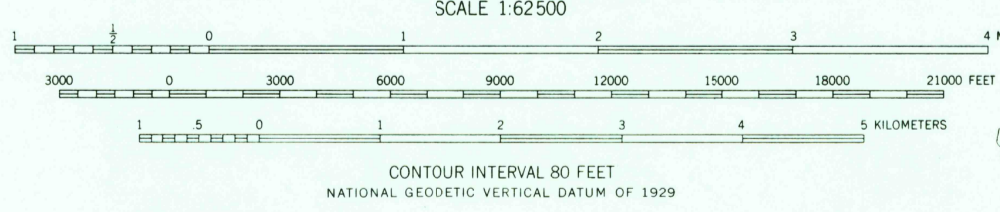
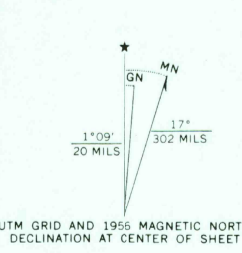


MOUNT MAURICE QUADRANGLE
MONTANA-WYOMING
15 MINUTE SERIES (TOPOGRAPHIC)

4174 E
1:24,000



Maped, edited, and published by the Geological Survey as part of the Department of the Interior program for the development of the Missouri River Basin Control by USGS and USC&GS
Topography from aerial photographs by multiple methods Aerial photographs taken 1951 and 1952. Field check 1956
Polyconic projection. 1927 North American datum 10,000-foot grid based on Montana coordinate system, south zone and Wyoming coordinate system, west central zone 1000 meter Universal Transverse Mercator grid ticks, zone 12, shown in blue
Land lines surveyed in T. 7 and 8 S., R. 18 E. and T. 9 S., R. 18, 19, and 20 E. based on the Principal Meridian, and surveyed in T. 58 N., R. 104 and 105 W. and in part of T. 58 N., R. 103 W. based on the Sixth Principal Meridian
Unchecked elevations are shown in brown
There may be private inholdings within the boundaries of the National or State reservations shown on this map



ROAD CLASSIFICATION
Medium duty — Light duty
Unimproved dirt
U.S. Route

MOUNT MAURICE, MONT.-WYO.
N4500-W10915/15

1956
DMA 4174 III-SERIES V794

THIS MAP COMPLIES WITH NATIONAL MAP ACCURACY STANDARDS
FOR SALE BY U.S. GEOLOGICAL SURVEY, DENVER, COLORADO 80225, OR RESTON, VIRGINIA 22092
A FOLDER DESCRIBING TOPOGRAPHIC MAPS AND SYMBOLS IS AVAILABLE ON REQUEST

RETURN TO:
USGS NATIONAL MAP ARCHIVES
RESTON, VA 22092