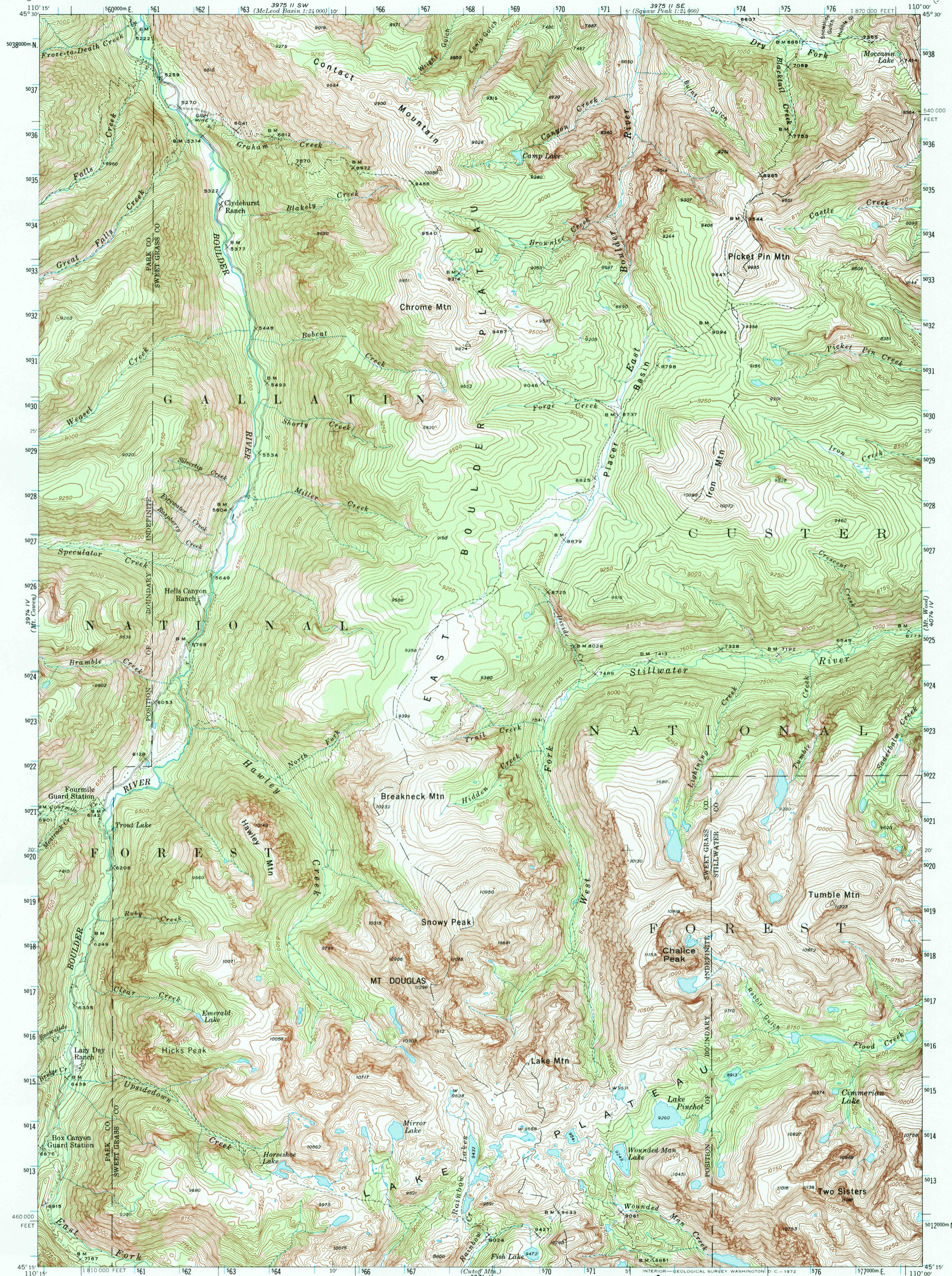


3975 II SW
3975 II SE

UNITED STATES
DEPARTMENT OF THE INTERIOR
GEOLOGICAL SURVEY

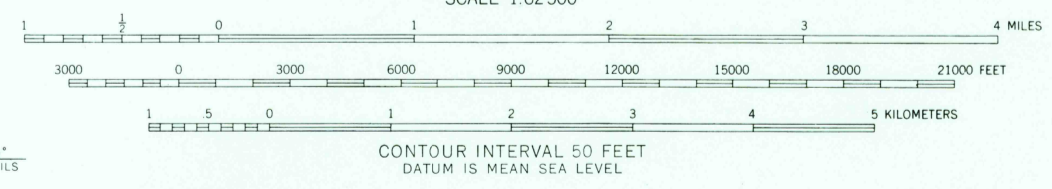
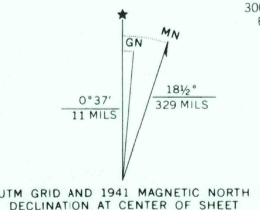
MONTANA
MT. DOUGLAS QUADRANGLE
15-MINUTE SERIES

4075 II SW
4075 II SE



Topography by J. L. Lewis and J. J. Hayes
Surveyed in 1939 and 1941

ROAD CLASSIFICATION
Light-duty ——— Unimproved dirt - - - - -



CONTOUR INTERVAL 60 FEET
DATUM IS MEAN SEA LEVEL

THIS MAP COMPLIES WITH NATIONAL MAP ACCURACY STANDARDS
FOR SALE BY U. S. GEOLOGICAL SURVEY, DENVER, COLORADO 80225, OR RESTON, VIRGINIA 22092
A FOLDER DESCRIBING TOPOGRAPHIC MAPS AND SYMBOLS IS AVAILABLE ON REQUEST

Polyconic projection. 1927 North American datum
10,000-foot grid based on Montana (South)
rectangular coordinate system
1000-meter Universal Transverse Mercator grid ticks,
zone 12, shown in blue

MT. DOUGLAS, MONT.
N 4515 - W 11000 / 15
1941

AMS 3974 I-SERIES V794

USGS NMD HISTORICAL MAP

FEB 03 1989

REC'D FILE COPY