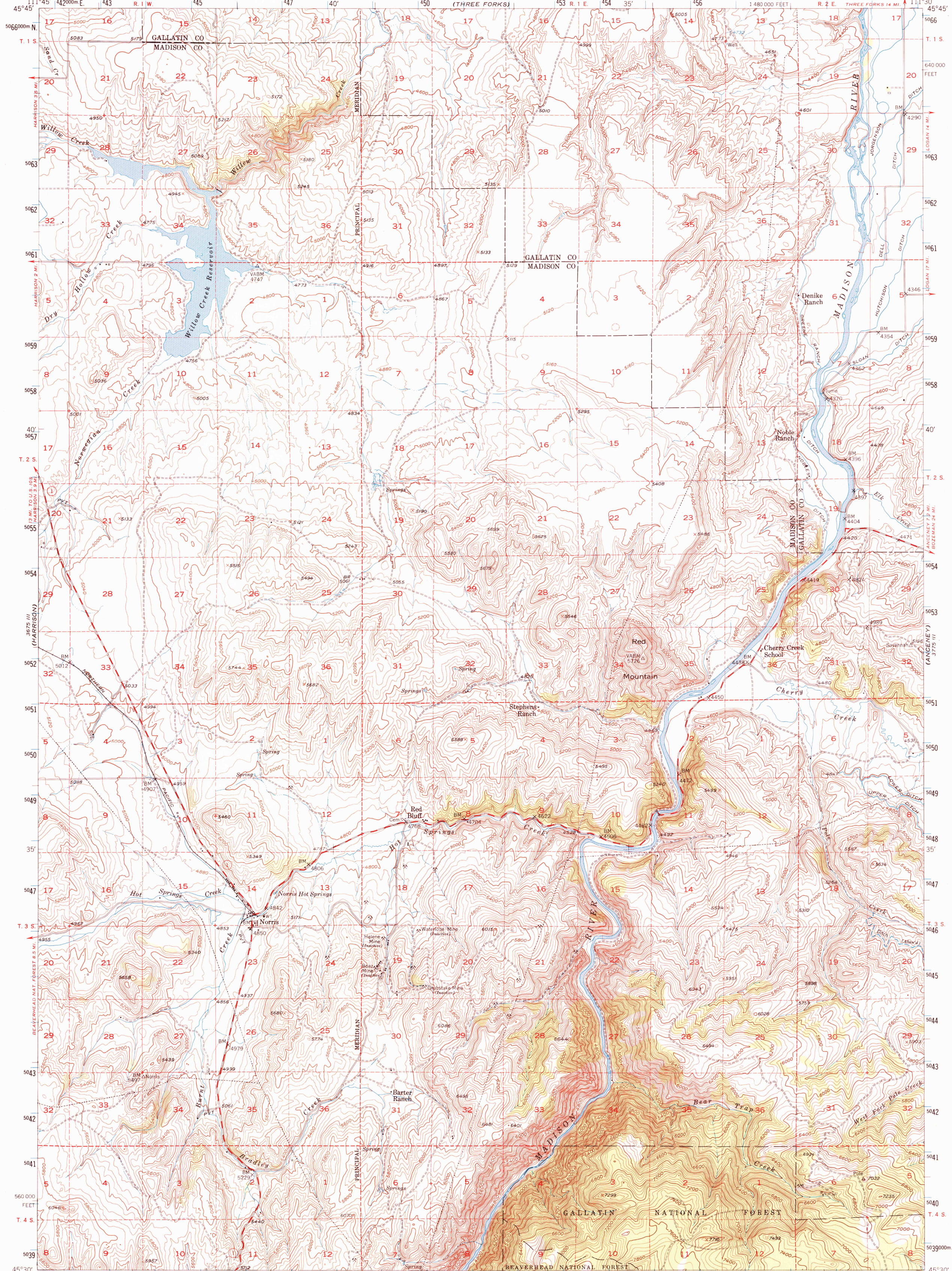


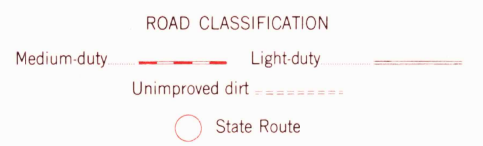
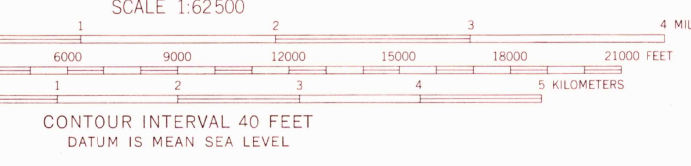
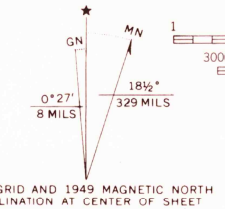
UNITED STATES  
DEPARTMENT OF THE INTERIOR  
GEOLOGICAL SURVEY

NORRIS QUADRANGLE  
MONTANA  
15 MINUTE SERIES (TOPOGRAPHIC)



Stereo compilation by Fairchild Aerial Surveys, Inc.,  
for the Bureau of Reclamation  
Field checked and published by the Geological Survey  
as part of the Department of the Interior program  
for the development of the Missouri River Basin  
Control by USGS and USC&GS

Topography from aerial photographs by stereo-planigraph methods  
Aerial photographs taken May 1947. Field check 1949  
Polyconic projection. 1927 North American datum  
10,000-foot grid based on Montana coordinate system,  
south zone  
Dashed land lines indicate approximate location  
1000-meter Universal Transverse Mercator grid ticks,  
zone 12, shown in blue



NORRIS, MONT.  
N4530-W11130/15

THIS MAP COMPLIES WITH NATIONAL MAP ACCURACY STANDARDS  
FOR SALE BY U. S. GEOLOGICAL SURVEY, DENVER, COLORADO 80225, OR RESTON, VIRGINIA 22092  
A FOLDER DESCRIBING TOPOGRAPHIC MAPS AND SYMBOLS IS AVAILABLE ON REQUEST

1949  
AMS 3675 II-SERIES V794