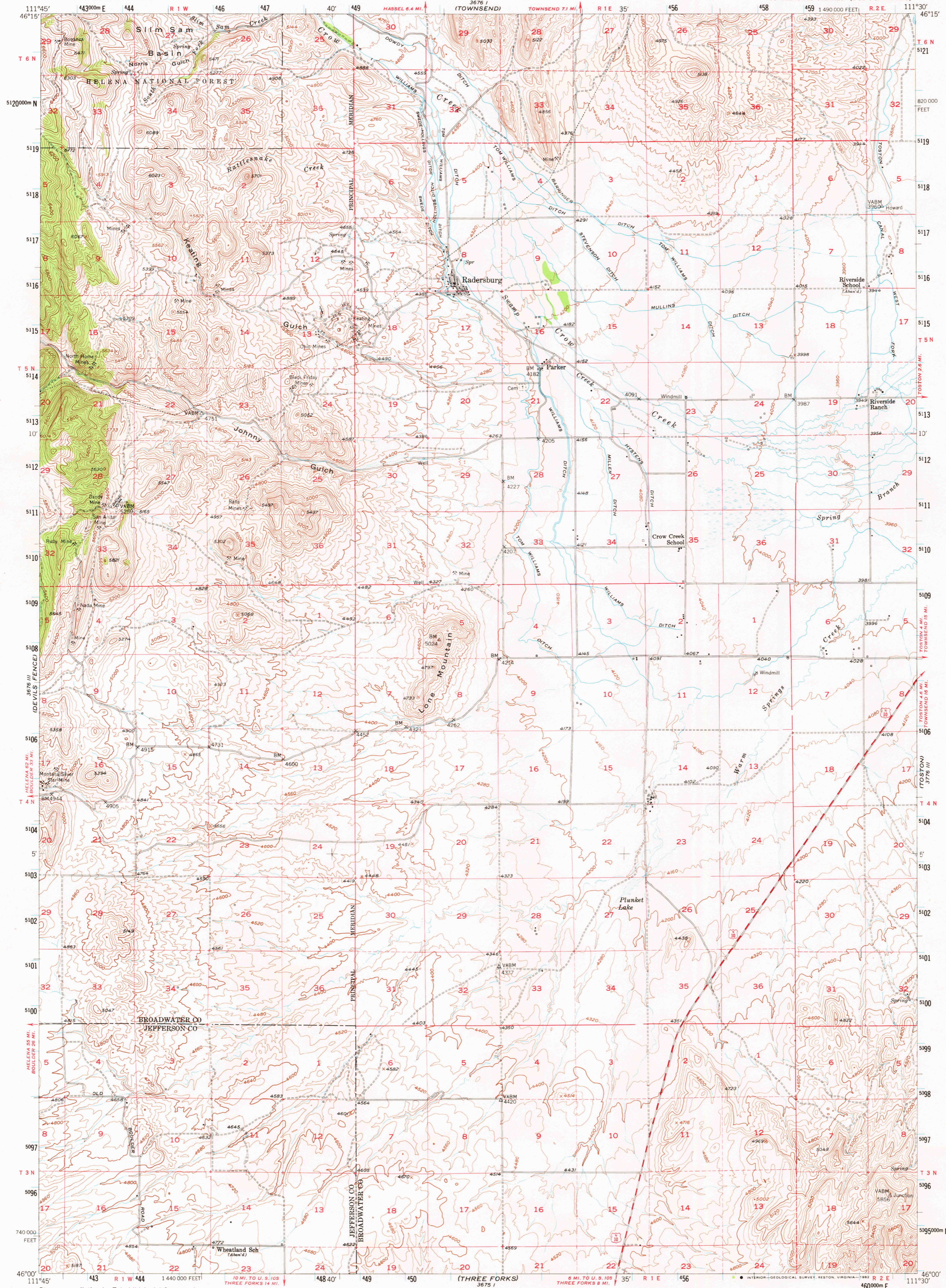


UNITED STATES
DEPARTMENT OF THE INTERIOR
GEOLOGICAL SURVEY

RADERSBURG QUADRANGLE
MONTANA
15 MINUTE SERIES (TOPOGRAPHIC)

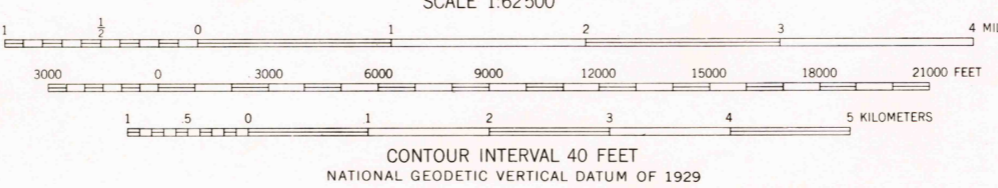


Stereo compilation by Fairchild Aerial Surveys, Inc. for the Bureau of Reclamation. Field examination and publication by the Geological Survey as part of the Department of the Interior program for the development of the Missouri River Basin.

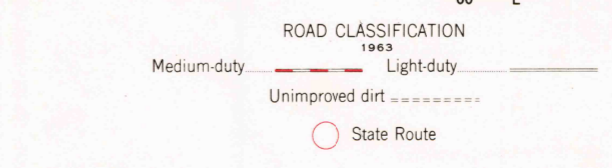
Control by USGS, USC&GS, USFS, and Missouri River Commission. Topography from aerial photographs by stereoplano-graph methods. Aerial photographs taken 1947. Field check 1949.

Polycylic projection. 1927 North American datum 10,000-foot grid based on Montana coordinate system, south zone.

All mines unless otherwise designated are inactive. Unchecked elevations are shown in brown. Dashed land lines indicate approximate locations. 1000-meter Universal Transverse Mercator grid ticks, zone 12, shown in blue.



THIS MAP COMPLIES WITH NATIONAL MAP ACCURACY STANDARDS FOR SALE BY U. S. GEOLOGICAL SURVEY, DENVER, COLORADO 80225, OR RESTON, VIRGINIA 22092. A FOLDER DESCRIBING TOPOGRAPHIC MAPS AND SYMBOLS IS AVAILABLE ON REQUEST.



RADERSBURG, MONT.
N4600 W1130/15

1949
DMA 3676 II-SERIES V 794

To place on the predicted North American Datum 1983 move the projection lines 10 meters north and 64 meters east. There may be private inholdings within the boundaries of the National or State reservations shown on this map.

RETURN TO
USGS M&D HISTORICAL MAP ARCHIVES

SEP 30 1982
1300