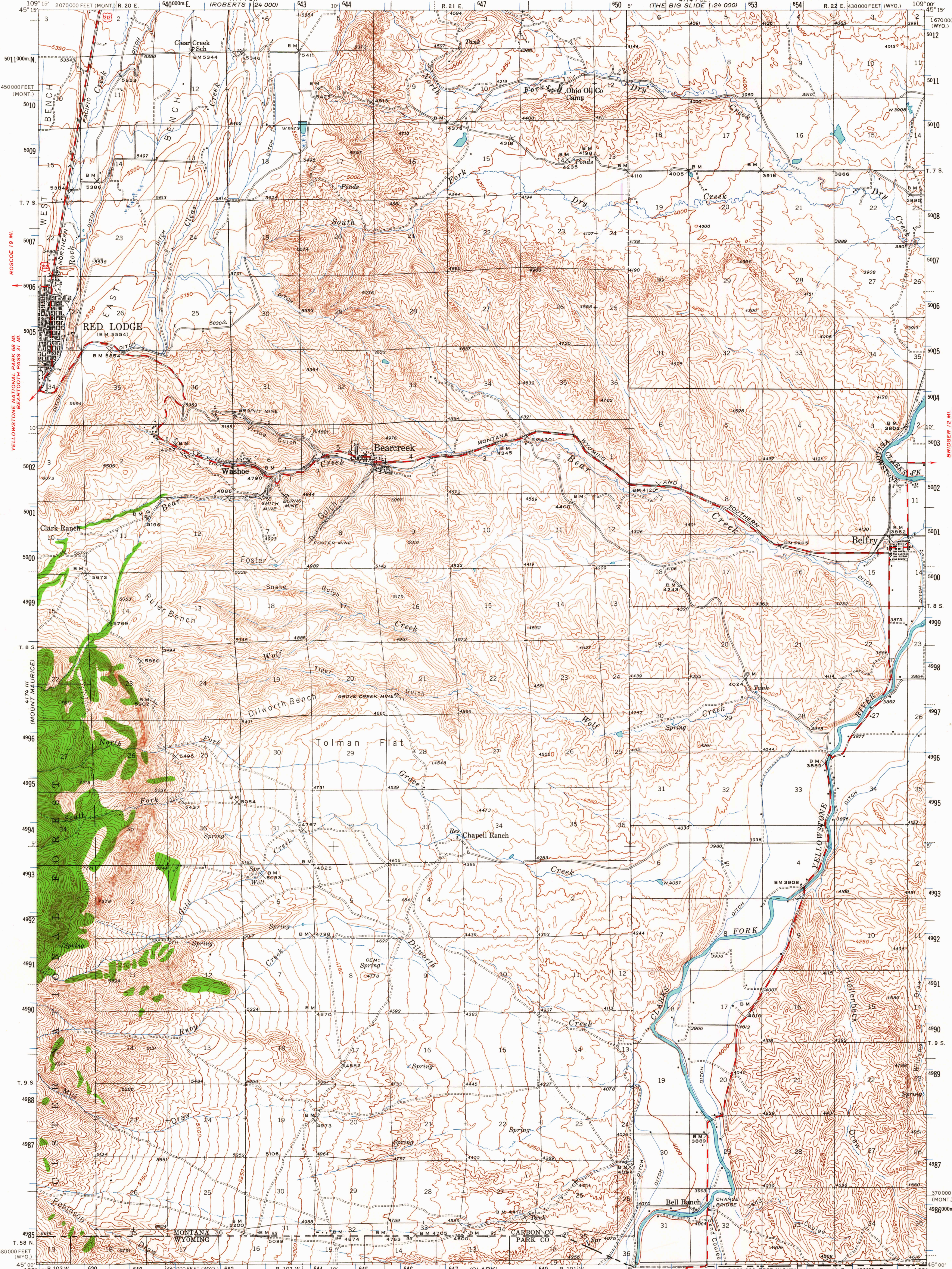


UNITED STATES
DEPARTMENT OF THE INTERIOR
GEOLOGICAL SURVEY

MONTANA-WYOMING
RED LODGE QUADRANGLE
15-MINUTE SERIES



Mapped by the Geological Survey
1944

SCALE 1:62500

INTERIOR-GEOLOGICAL SURVEY, Polyconic projection, 1927 North American datum
WASHINGTON, D. C. - 1965

USGS
Historical File
Topographic Division

U.S.G.S.
FILE COPY
TOPOGRAPHIC DIVISION

RED LODGE, MONT.-WYO.

1944
AMS 4174 II-SERIES V794

MAR 17 1965
1530

Contour interval 50 feet
Datum is mean sea level

ROAD CLASSIFICATION
1965
Medium-duty Light-duty
Unimproved dirt
U.S. Route

FOR SALE BY U. S. GEOLOGICAL SURVEY, DENVER 25, COLORADO OR WASHINGTON 25, D. C.
A FOLDER DESCRIBING TOPOGRAPHIC MAPS AND SYMBOLS IS AVAILABLE ON REQUEST