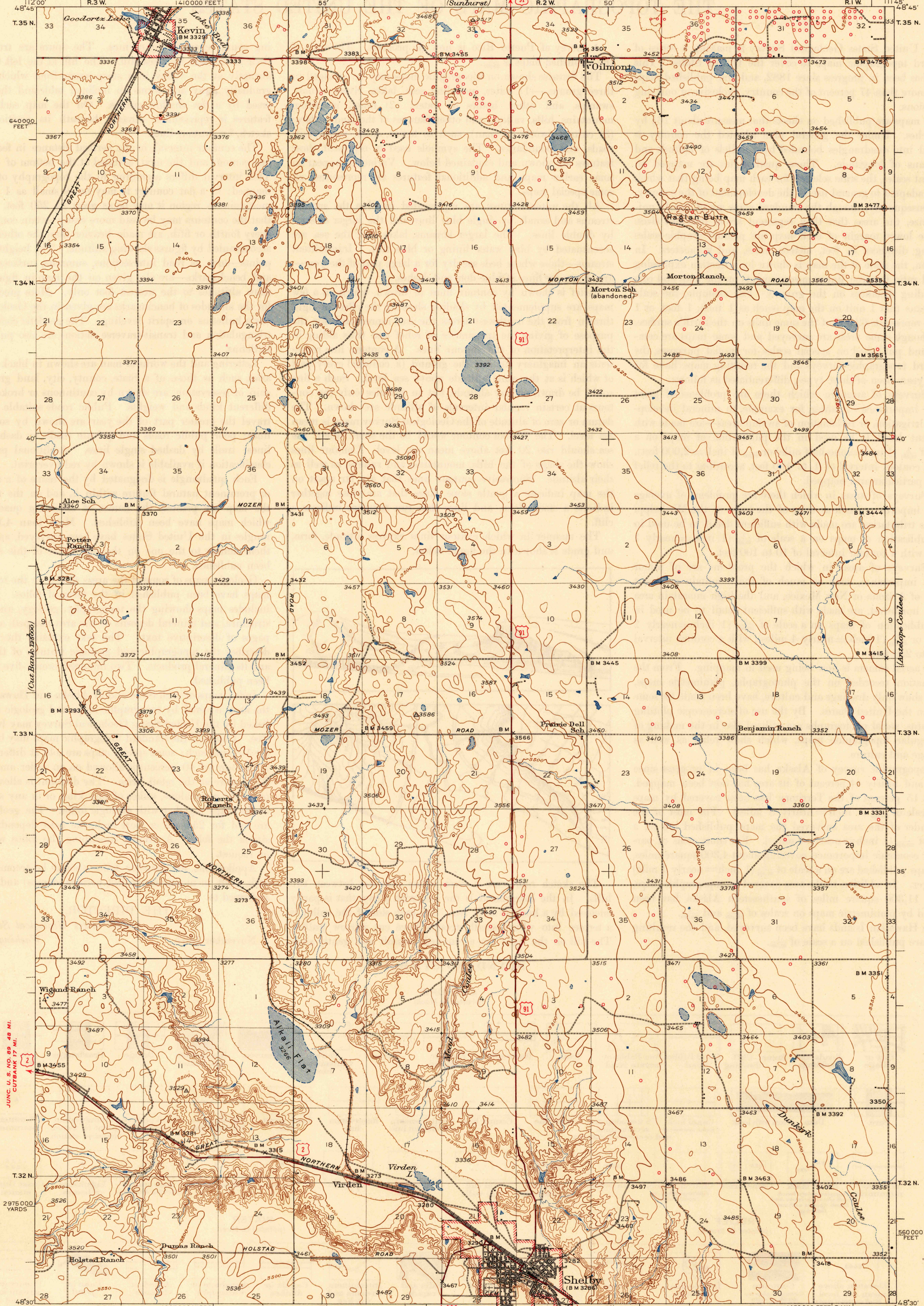


UNITED STATES
DEPARTMENT OF THE INTERIOR
GEOLOGICAL SURVEY

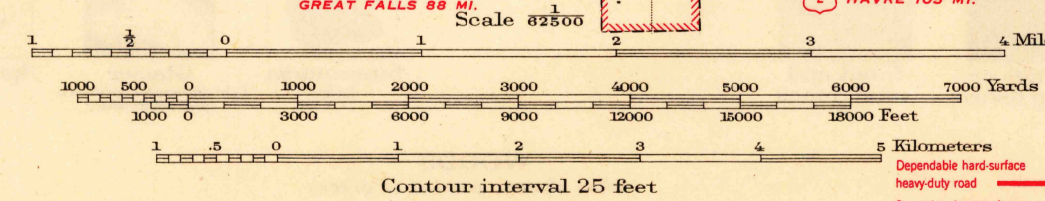
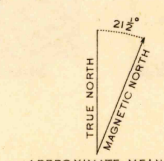
U. S. G. S.
FILE COPY
Inspection and Editing.

MONTANA
(TOOLE COUNTY)
SHELBY QUADRANGLE
15-MINUTE SERIES



JUNE 11, 1943
CUTBANK 17 MI.

Mapped by the Geological Survey
1943



Polyconic projection, 1927 North American datum
5000 yard grid based on U.S. zone system, F
10000 foot grid based on Montana (North)
rectangular coordinate system

ROAD CLASSIFICATION
1945
Dependable hard-surface
Heavy-duty road
Secondary hard-surface
All-weather road
Dirt road
More than two lanes indicated along road with tick at point of change
OIL AND GAS WELLS

SHELBY, MONT.
Edition of 1946
N 4830-W 11145/15

USGS
Historical File
Topographic Division

U. S. G. S.
FILE COPY
Inspection and Editing.

MAR 14 1946

2155