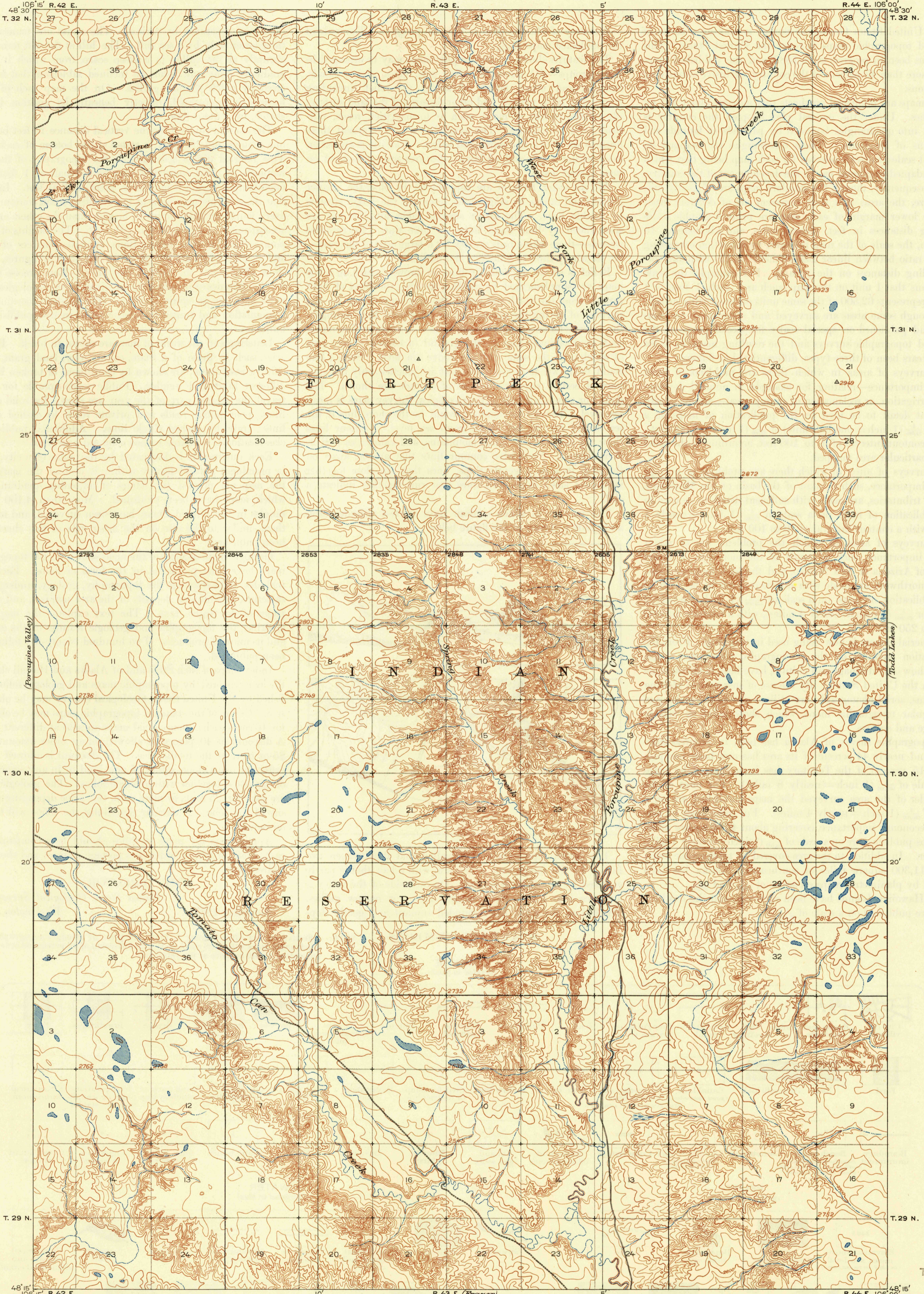


UNITED STATES
DEPARTMENT OF THE INTERIOR
GEOLOGICAL SURVEY

MONTANA
(VALLEY COUNTY)
SPRING CREEK QUADRANGLE



U. S. G. S.
FILE COPY
Inspection and Editing.

U. S. G. S.
FILE COPY
Inspection and Editing.

(Nashua)
48° 15' 106 15' R. 42 E.
R.B. Marshall, Chief Geographer.
Topography and control by General Land Office.
Surveyed in 1909-1910.



Contour interval 20 feet
Datum is mean sea level

16°
18°
16°
18°
Edition of Jan. 1915, reprinted 1949
Polyconic projection.

U. S. G. S.
FILE COPY
Inspection and Editing.

SPRING CREEK, MONT.
N4815-W10600/15

FEB 1 1949

3160

USGS
Historical File
Topographic Division