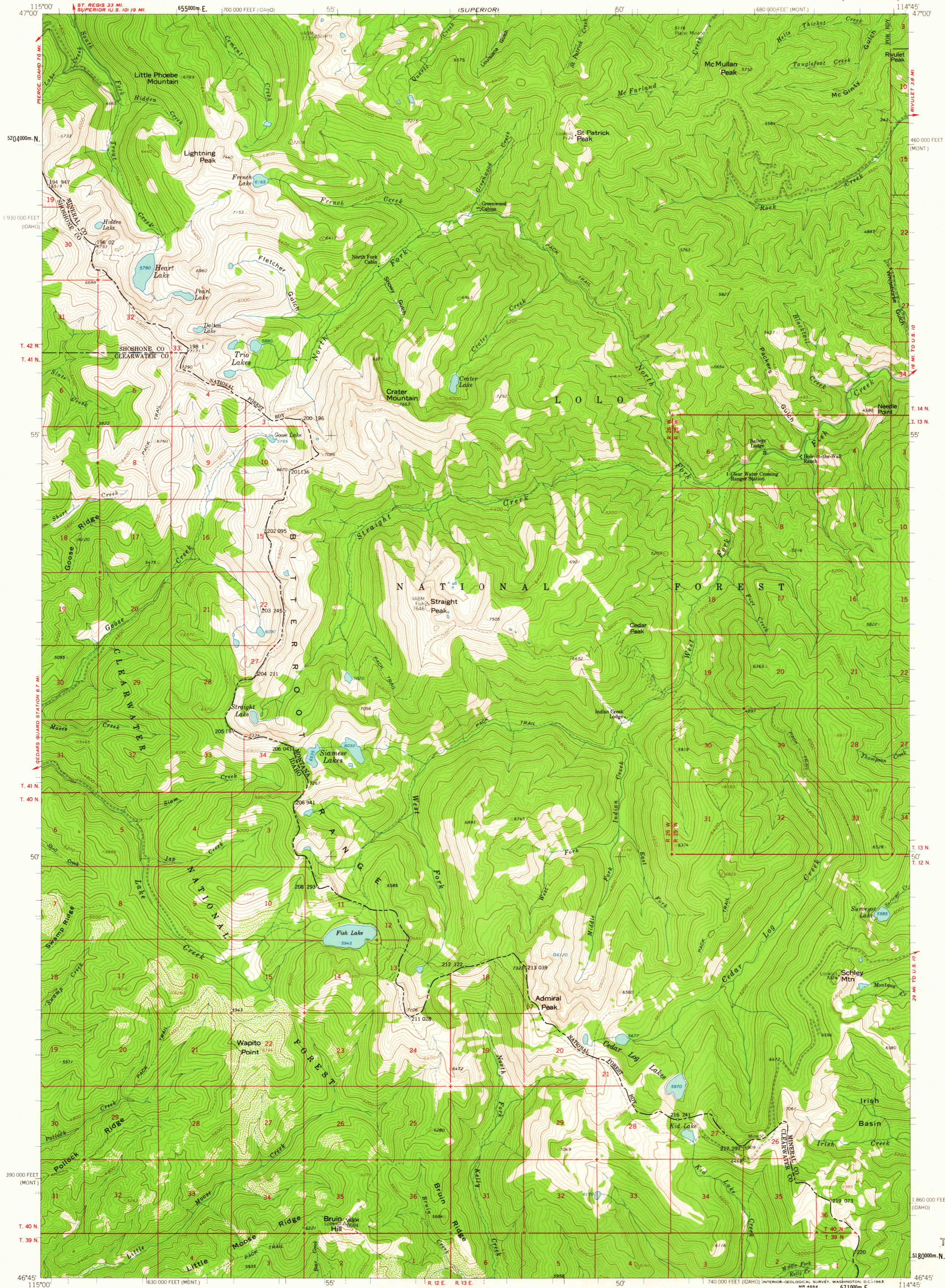
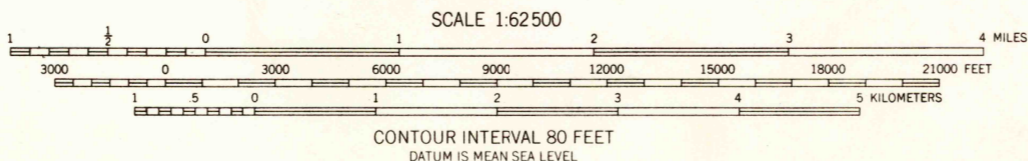
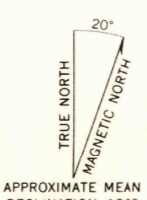


UNITED STATES
DEPARTMENT OF THE INTERIOR
GEOLOGICAL SURVEY

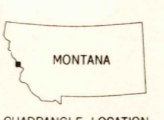
STRAIGHT PEAK QUADRANGLE
MONTANA-IDAHO
15 MINUTE SERIES (TOPOGRAPHIC)



Mapped, edited, and published by the Geological Survey
Control by USGS and USC&GS
Topography by photogrammetric methods from aerial photographs taken 1954-1955. Field checked 1960
Polyconic projection. 1927 North American datum
10,000-foot grids based on Montana coordinate system, central zone, and Idaho coordinate system, west zone 1000-meter Universal Transverse Mercator grid ticks, zone 11, shown in blue
Where omitted, land lines have not been established



CONTOUR INTERVAL 80 FEET
DATUM IS MEAN SEA LEVEL



ROAD CLASSIFICATION
Light-duty ——— Unimproved dirt - - - - -

STRAIGHT PEAK, MONT.-IDAHO
N4645-W11445/15

1960

THIS MAP COMPLIES WITH NATIONAL MAP ACCURACY STANDARDS
FOR SALE BY U.S. GEOLOGICAL SURVEY, DENVER 25, COLORADO OR WASHINGTON 25, D.C.
A FOLDER DESCRIBING TOPOGRAPHIC MAPS AND SYMBOLS IS AVAILABLE ON REQUEST

USGS
Historical File
Topographic Division

MAR 26 1963

2710