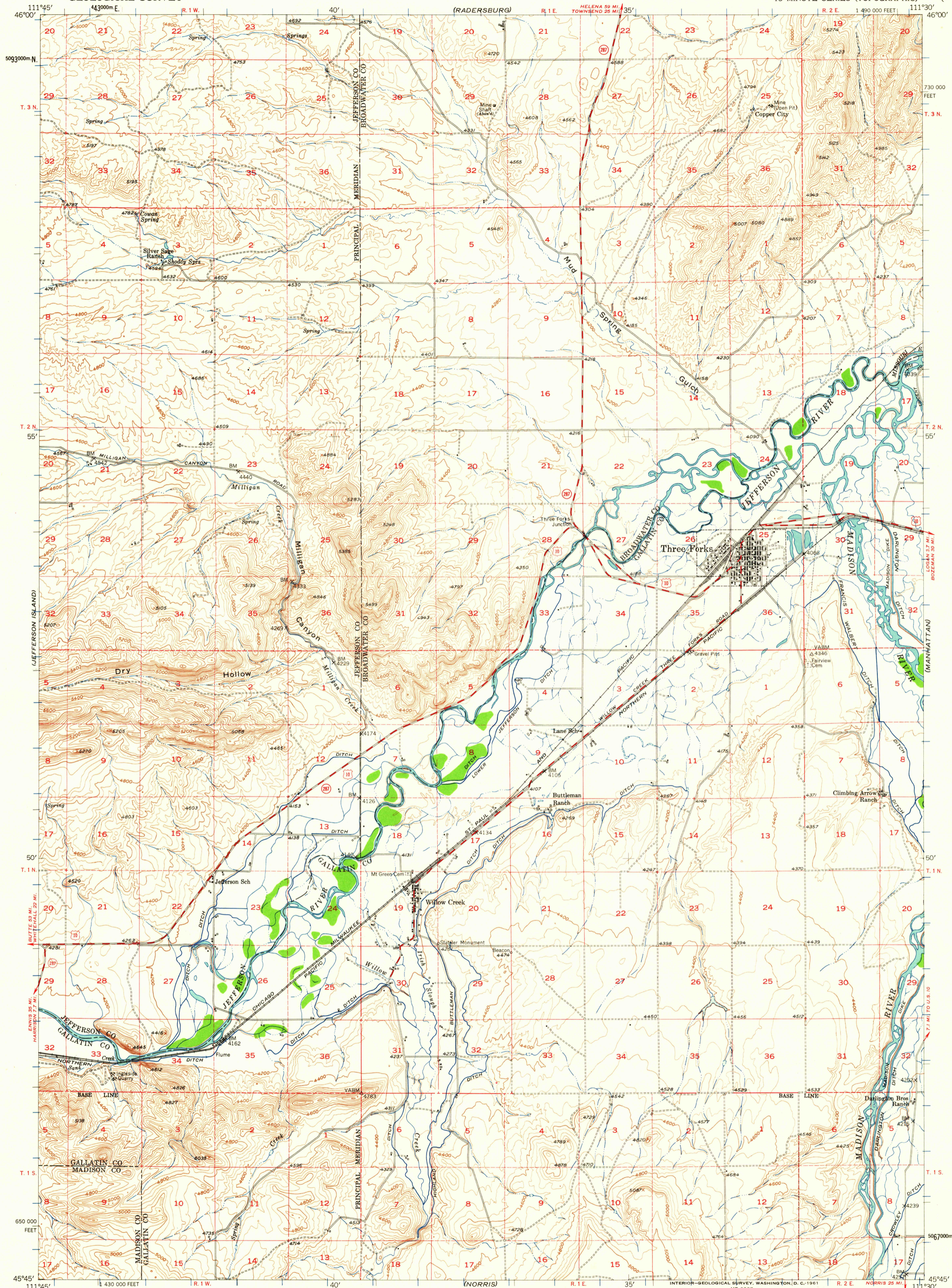
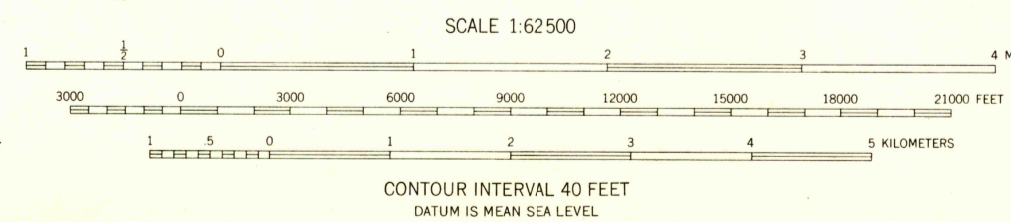


UNITED STATES
DEPARTMENT OF THE INTERIOR
GEOLOGICAL SURVEY

THREE FORKS QUADRANGLE
MONTANA
15 MINUTE SERIES (TOPOGRAPHIC)



Stereo compilation by Fairchild Aerial Surveys, Inc. for the Bureau of Reclamation. Field examination and publication by the Geological Survey as part of the Department of the Interior program for the development of the Missouri River Basin. Control by USGS, USC&GS, and USFS. Topography from aerial photographs by stereoplanigraph methods, 1948. Aerial photographs taken 1947. Field check 1950. Polyconic projection. 1927 North American datum 10,000-foot grid based on Montana coordinate system, south zone. 1000-meter Universal Transverse Mercator grid ticks, zone 12, shown in blue. Dashed land lines indicate approximate locations.



ROAD CLASSIFICATION
Medium-duty — Light-duty
Unimproved dirt —
U.S. Route — State Route



THREE FORKS, MONT. U.S.G.S. 2010
N4545-W1130/15
1950

FILE COPY
TOPOGRAPHIC DIVISION

JAN 19 1962