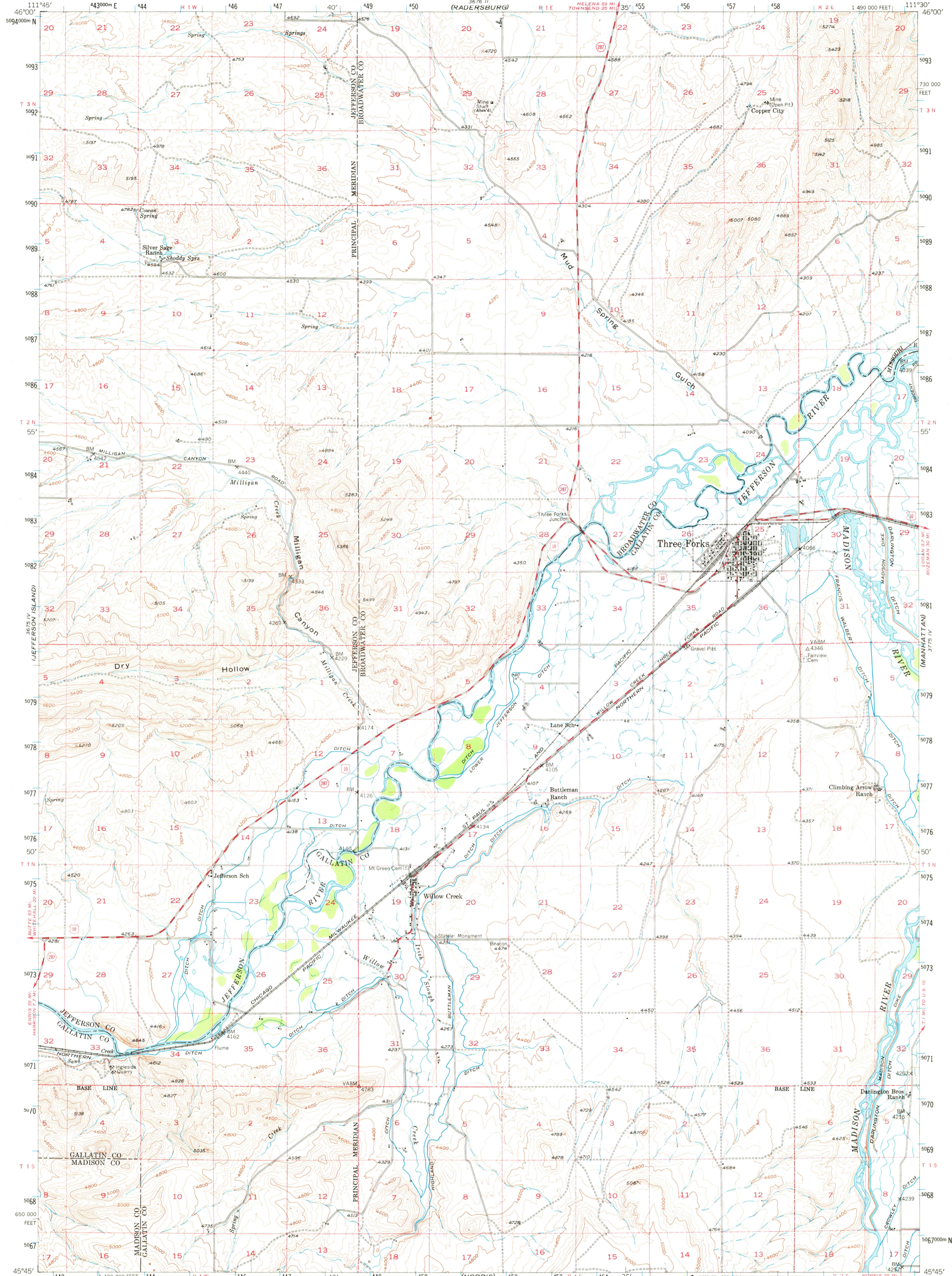


DEVILS FENCE
3675 IV
3675 III

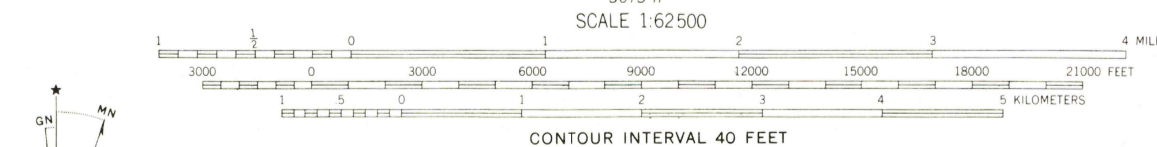
UNITED STATES
DEPARTMENT OF THE INTERIOR
GEOLOGICAL SURVEY

THREE FORKS QUADRANGLE
MONTANA
15 MINUTE SERIES (TOPOGRAPHIC)

3776 II
17050 III



Stereo compilation by Fairchild Aerial Surveys, Inc. for the Bureau of Reclamation. Field examination and publication by the Geological Survey as part of the Department of the Interior program for the development of the Missouri River Basin. Control by USGS, USC&GS, and USFS. Topography from aerial photographs by stereoplanigraph methods, 1948. Aerial photographs taken 1947. Field check 1950. Polyconic projection. 1927 North American datum. 10,000-foot grid based on Montana coordinate system, south zone. 1000-meter Universal Transverse Mercator grid ticks, zone 12, shown in blue. Dashed land lines indicate approximate locations.



ROAD CLASSIFICATION
Medium-duty — Light-duty
Unimproved dirt —————
U.S. Route — State Route



THREE FORKS, MONT.
N4545-W1130/15
1950
AMS 3675 I-SERIES V894

DEC 29 1978
2800

THIS MAP COMPLIES WITH NATIONAL MAP ACCURACY STANDARDS FOR SALE BY U.S. GEOLOGICAL SURVEY, DENVER, COLORADO 80225, OR RESTON, VIRGINIA 22092. A FOLDER DESCRIBING TOPOGRAPHIC MAPS AND SYMBOLS IS AVAILABLE ON REQUEST.

USGS
Historical
Topographic Division