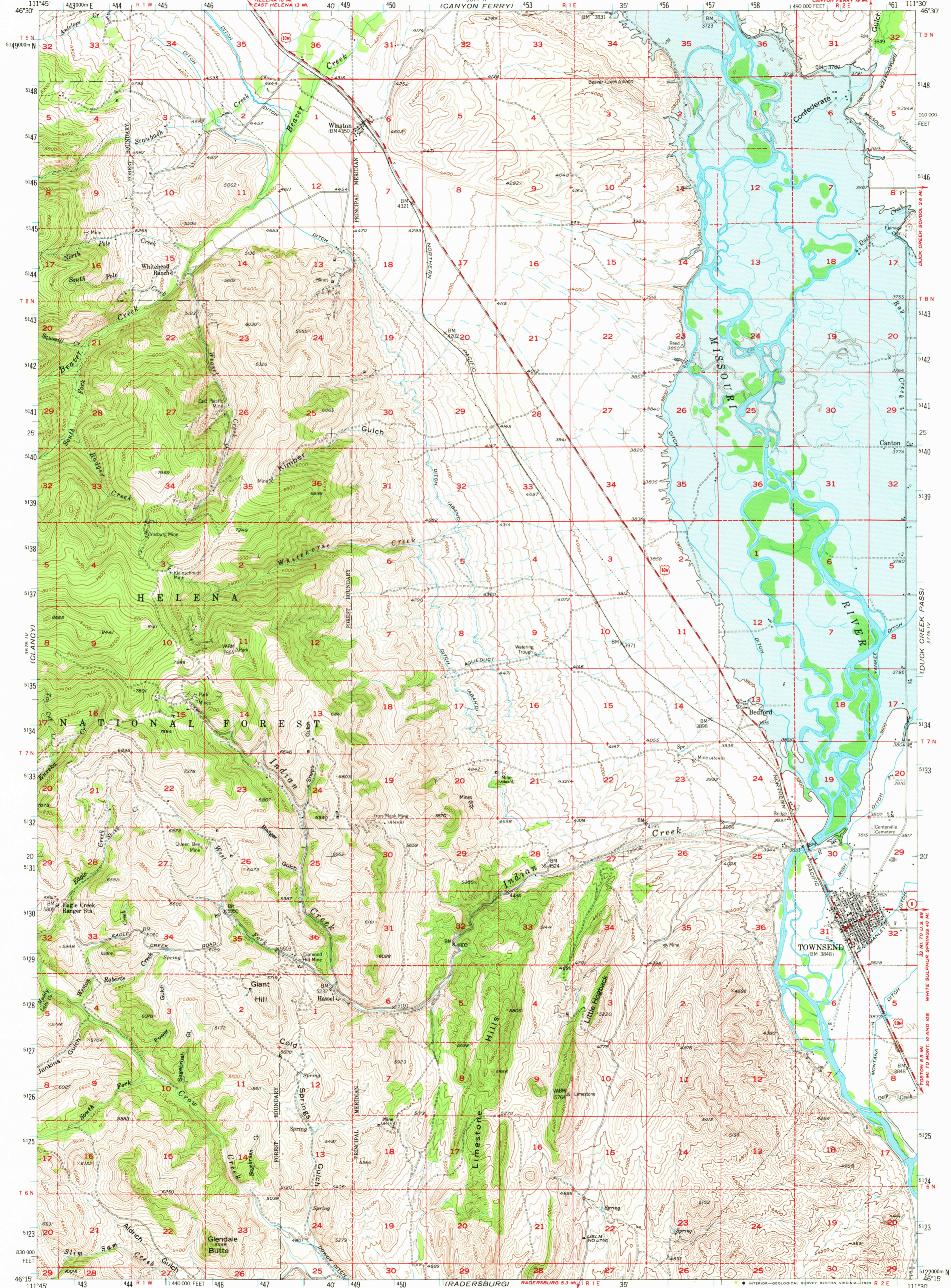


(EAST HELENA)  
3677 II  
3678 III

UNITED STATES  
DEPARTMENT OF THE INTERIOR  
GEOLOGICAL SURVEY

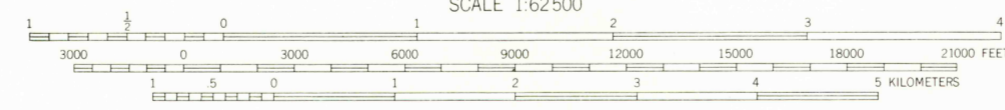
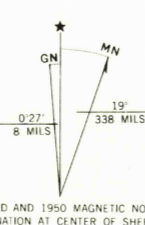
TOWNSEND QUADRANGLE  
MONTANA—BROADWATER CO.  
15 MINUTE SERIES (TOPOGRAPHIC)  
1:490,000 FEET R 2 E T 8 N

3677 II  
3678 III  
3679 IV  
3680 V



(DEVILS FENCE)  
3678 III  
3679 IV

Stereo compilation by Fairchild Aerial Surveys, Inc. for the Bureau of Reclamation. Field examination and publication by the Geological Survey as part of the Department of the Interior Program for the development of the Missouri River Basin. Control by USGS, USC&GS, USFS and MRC. Topography from aerial photographs by stereoplanigraph methods 1947-1948. Aerial photographs taken 1947. Field check 1950. Polyconic projection. 1927 North American datum, 10,000-foot grid based on Montana coordinate system, south zone. All mines unless otherwise designated are inactive. Blue hachured area is proposed Canyon Ferry Reservoir (Elevation 3800). Dashed land lines indicate approximate locations. 1000-meter Universal Transverse Mercator grid ticks, zone 12, shown in blue.



CONTOUR INTERVAL 40 FEET  
NATIONAL GEODETIC VERTICAL DATUM OF 1929

THIS MAP COMPLIES WITH NATIONAL MAP ACCURACY STANDARDS FOR SALE BY U.S. GEOLOGICAL SURVEY, DENVER, COLORADO 80225 OR RESTON, VIRGINIA 22092. A FOLDER DESCRIBING TOPOGRAPHIC MAPS AND SYMBOLS IS AVAILABLE ON REQUEST.



QUADRANGLE LOCATION  
There may be private inholdings within the boundaries of the National or State reservations shown on this map. To place on the predicted North American Datum 1983 move the projection lines 10 meters north and 64 meters east.

ROAD CLASSIFICATION

Heavy-duty	4 LANE 16 LANE	Light-duty
Medium-duty	4 LANE 16 LANE	Unimproved dirt
U.S. Route		State Route

TOWNSEND, MONT.  
N4615—W11130/15  
1950  
DMA 3676 I-SERIES V794