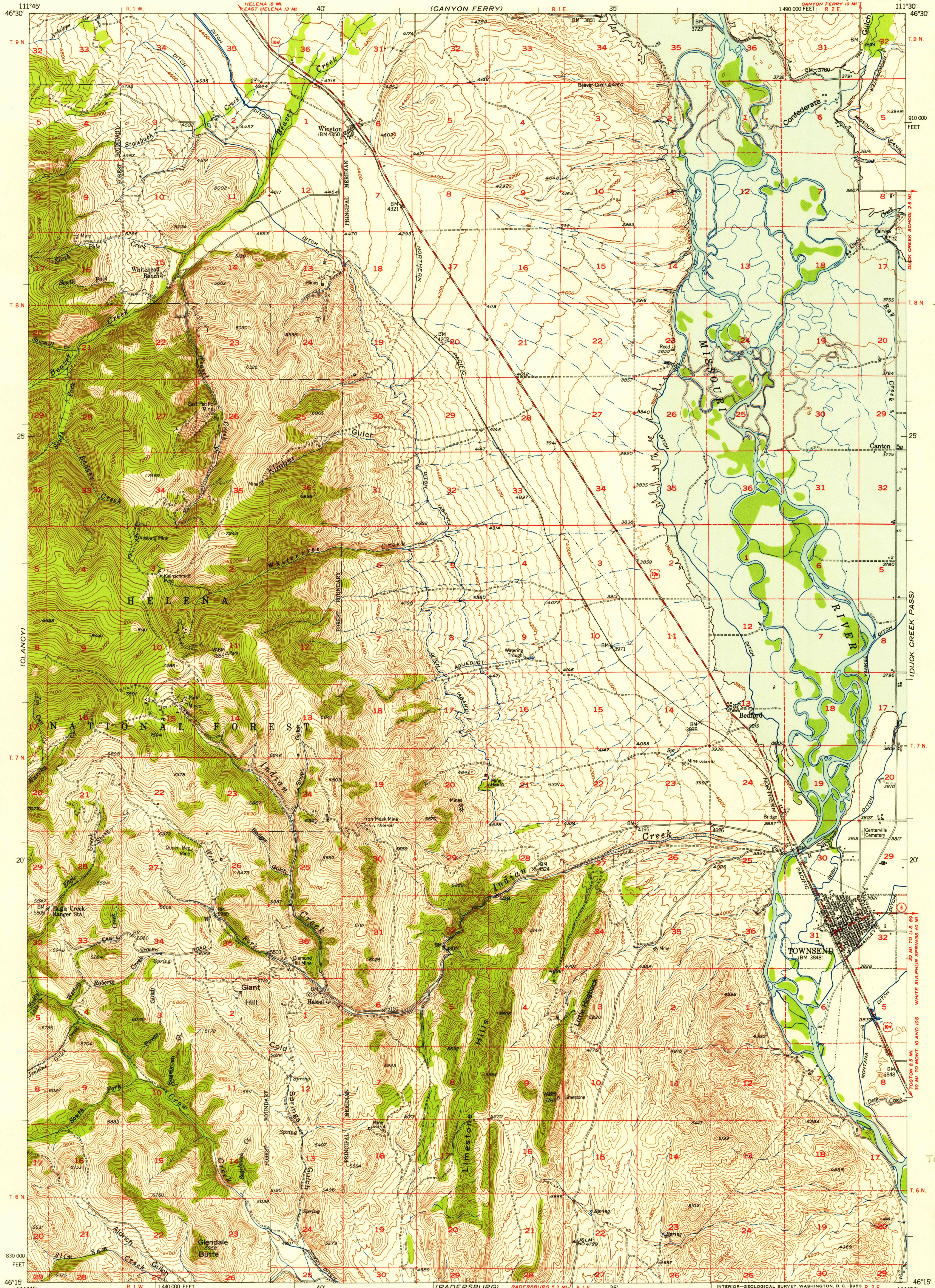


FORT LOGAN  
1:250,000

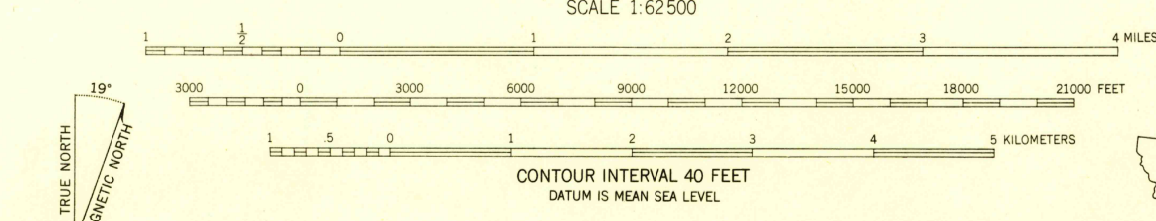


U.S.G.S.  
**FILE COPY**  
Inspection and Editing

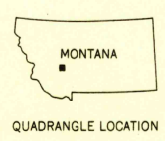
USGS  
Historical File  
Topographic Division

U.S.G.S.  
**FILE COPY**  
Inspection and Editing

Stereo compilation by Fairchild Aerial Surveys, Inc. for the Bureau of Reclamation. Field examination and publication by the Geological Survey as part of the Department of the Interior Program for the development of the Missouri River Basin. Control by USGS, USC&GS, USFS and MRC. Topography from aerial photographs by stereoplano-graph methods 1947-1948. Aerial photographs taken 1947. Field check 1950. Polyconic projection, 1927 North American datum 10,000-foot grid based on Montana coordinate system, south zone. All mines unless otherwise designated are inactive. Blue hachured area is proposed Canyon Ferry Reservoir (Elevation 3800). Dashed land lines indicate approximate locations.



ROAD CLASSIFICATION  
Heavy-duty 4 LANE 10 LANE Light-duty  
Medium-duty 4 LANE 10 LANE Unimproved dirt  
U. S. Route State Route



TOWNSEND, MONT.  
N4615-W11130/15

FOR SALE BY U. S. GEOLOGICAL SURVEY, FEDERAL CENTER, DENVER, COLORADO OR WASHINGTON 25, D. C.  
A FOLDER DESCRIBING TOPOGRAPHIC MAPS AND SYMBOLS IS AVAILABLE ON REQUEST

1950

DEC 28 1963

2660