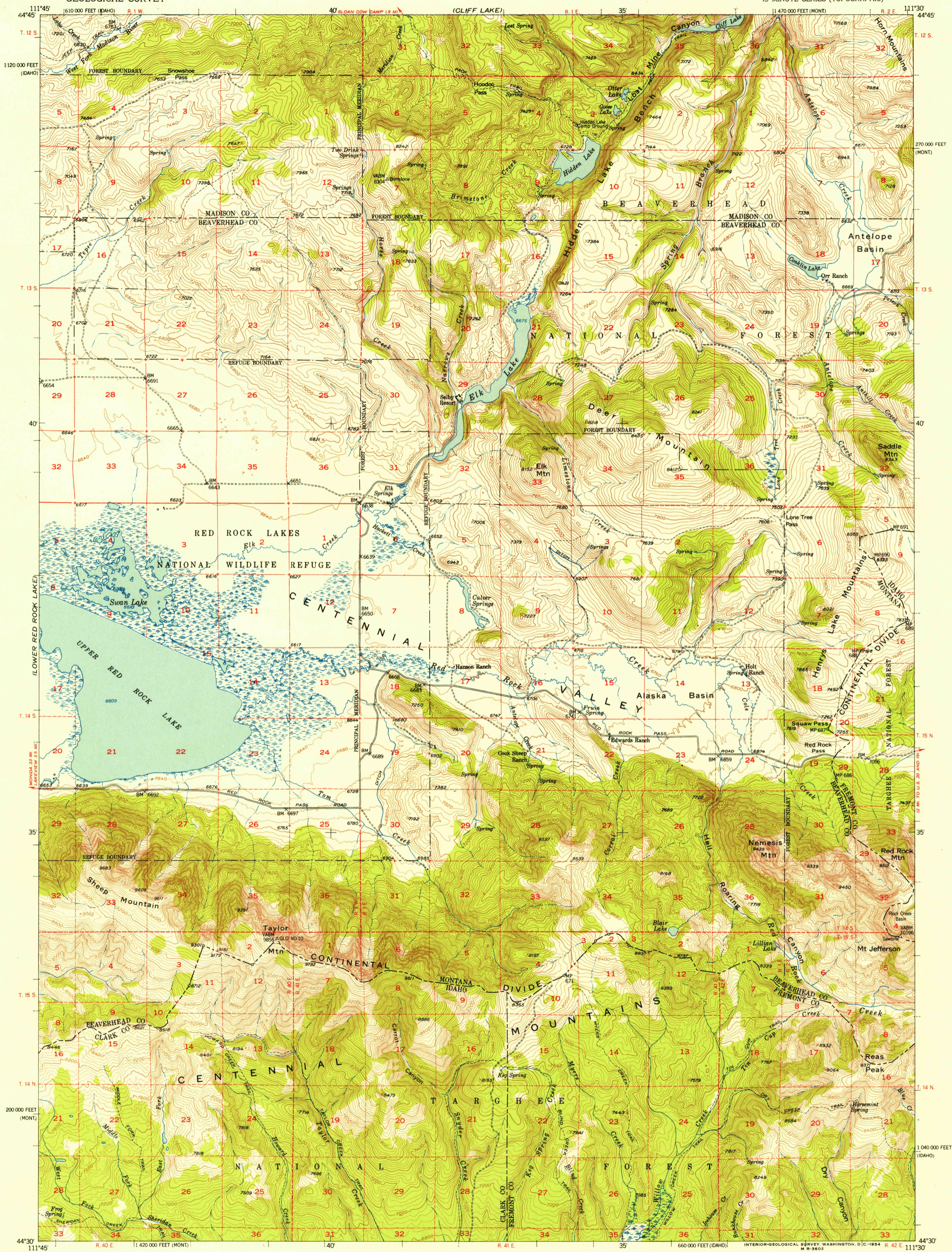


FILE COPY
Geological Survey

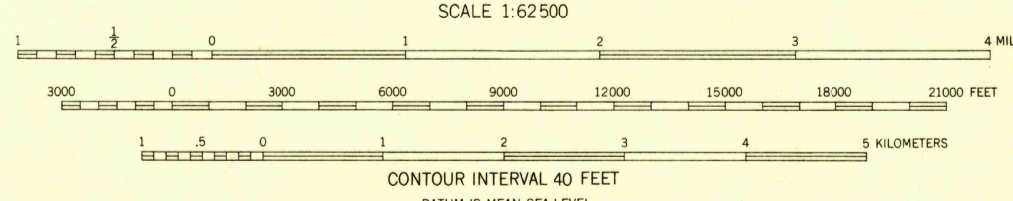
FILE COPY
Geological Survey

USGS
Historical File
Topographic Division

JUN 10 1954
2495



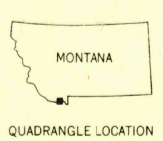
Mapped, edited, and published by the Geological Survey
Control by USGS and USC&GS
Topography from aerial photographs by photogrammetric methods. Aerial photographs taken 1947. Field check 1950
Polyconic projection, based on North American datum 10,000-foot grid, 1927 Montana coordinate system, south zone and Idaho coordinate system, east zone
Dashed land lines indicate approximate locations
Land lines unsurveyed in T. 12 S.-R. 1 W., T. 14 N.-R. 40 E., R. 41 E. and R. 42 E., and T. 15 N.-R. 42 E. are based on Boise Meridian
Unchecked elevations are shown in brown



ROAD CLASSIFICATION

Heavy-duty	4 LANE 6 LANE	Light-duty	2 LANE 4 LANE
Medium-duty	4 LANE 6 LANE	Unimproved dirt	---

U. S. Route State Route



UPPER RED ROCK LAKE, MONT-IDAHO
N4430-W1130/15
1950

THIS MAP COMPLIES WITH NATIONAL MAP ACCURACY STANDARDS
FOR SALE BY U. S. GEOLOGICAL SURVEY, FEDERAL CENTER, DENVER, COLORADO OR WASHINGTON 25, D. C.
A FOLDER DESCRIBING TOPOGRAPHIC MAPS AND SYMBOLS IS AVAILABLE ON REQUEST