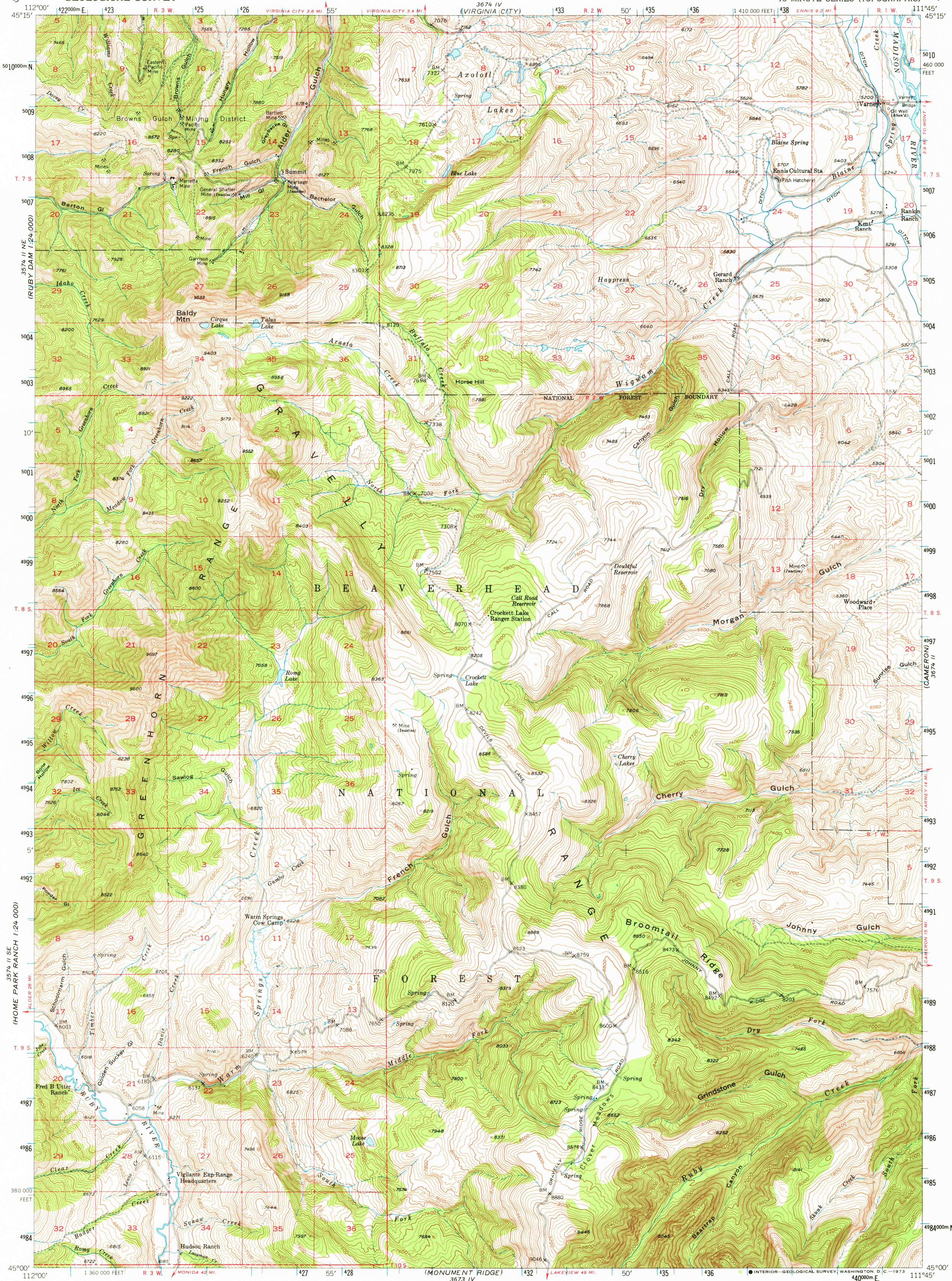
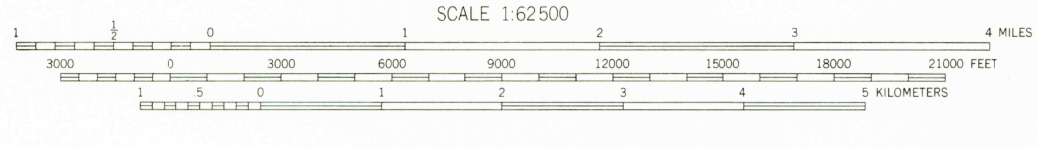


UNITED STATES  
DEPARTMENT OF THE INTERIOR  
GEOLOGICAL SURVEY

VARNEY QUADRANGLE  
MONTANA-MADISON CO.  
15 MINUTE SERIES (TOPOGRAPHIC)



Stereo compilation by Fairchild Aerial Surveys, Inc. for the Bureau of Reclamation. Field examination and publication by the Geological Survey as part of the Department of the Interior program for the development of the Missouri River Basin Control by USGS, USCA&S, and USFS. Topography from aerial photographs by stereoplanigraph methods. Aerial photographs taken 1947. Field check 1949. Polyconic projection 1927 North American datum 10,000-foot grid based on Montana coordinate system, south zone. UTM GRID AND 1949 MAGNETIC NORTH DECLINATION AT CENTER OF SHEET. Land lines unsurveyed in T.9 S.-R.2 W., T.10 S.-R.1 W., T.10 S.-R.2 W. and in part of T.8 S.-R.2 W. and T.9 S.-R.1 W. Dashed land lines indicate approximate location. Unchecked elevations are shown in brown. 1000-meter Universal Transverse Mercator grid ticks, zone 12, shown in blue.



ROAD CLASSIFICATION

Heavy-duty	4 LANE 16 LANE	Light-duty	2 LANE 16 LANE
Medium-duty	4 LANE 16 LANE	Unimproved dirt	-----
U.S. Route	⬢	State Route	○

THIS MAP COMPLIES WITH NATIONAL MAP ACCURACY STANDARDS  
FOR SALE BY U.S. GEOLOGICAL SURVEY, DENVER, COLORADO 80225 OR WASHINGTON, D. C. 20242  
A FOLDER DESCRIBING TOPOGRAPHIC MAPS AND SYMBOLS IS AVAILABLE ON REQUEST

VARNEY, MONT.  
N4500-W11145/15  
1949  
AMS 3674 III—SERIES V794