

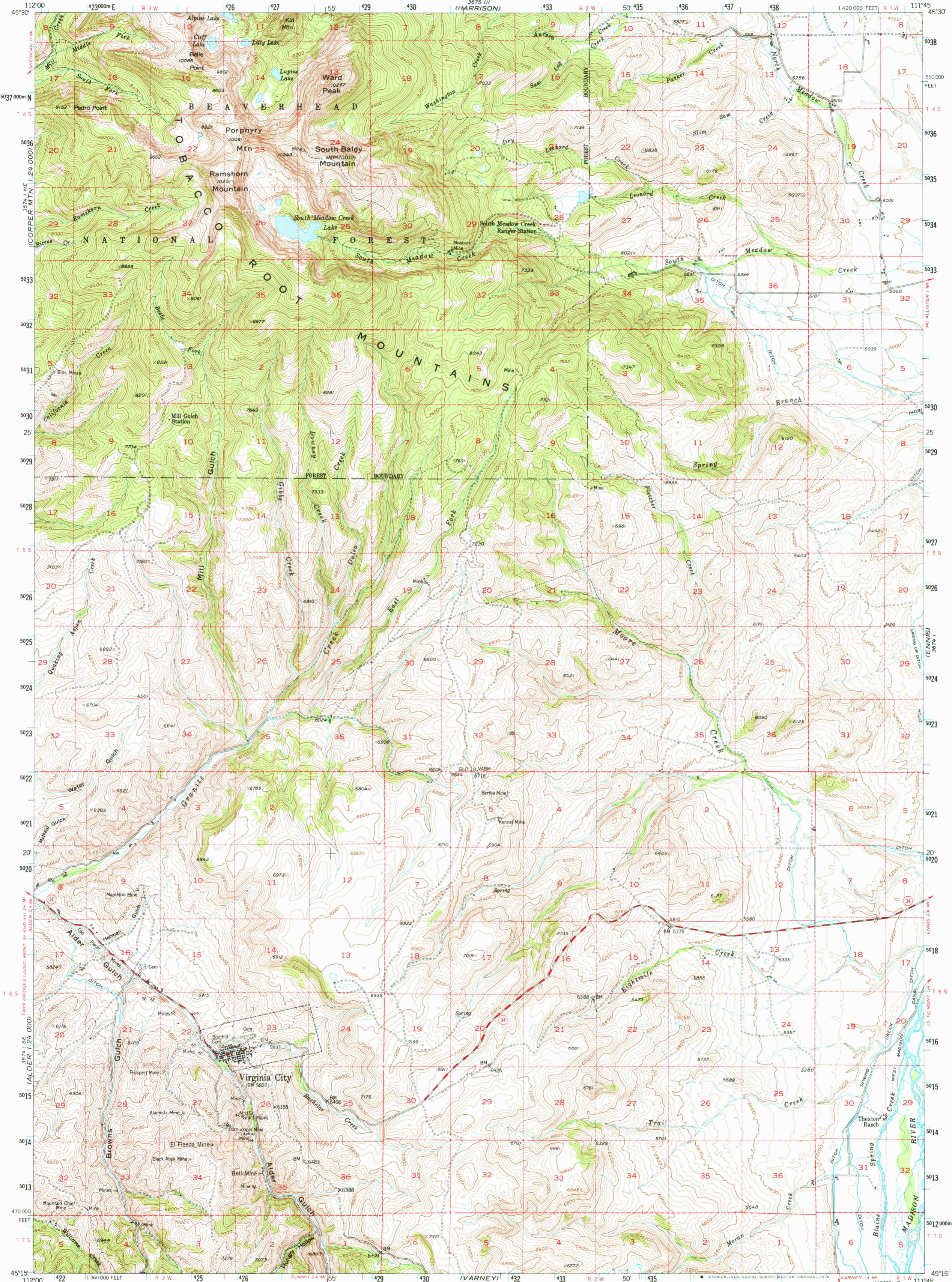
WATERLOO

UNITED STATES
DEPARTMENT OF THE INTERIOR
GEOLOGICAL SURVEY

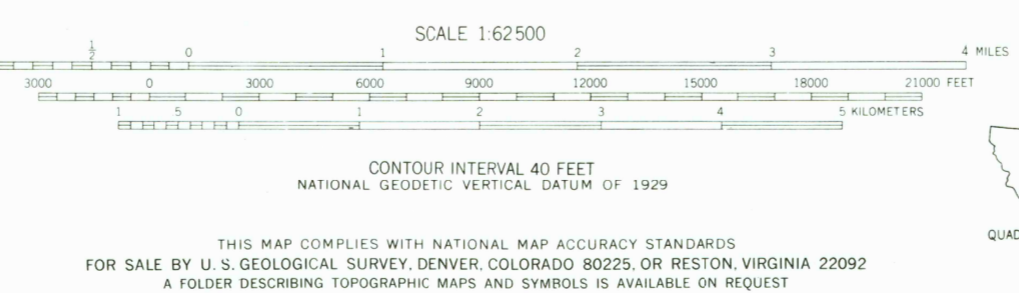
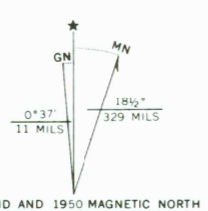


VIRGINIA CITY QUADRANGLE
MONTANA-MADISON CO.
15 MINUTE SERIES (TOPOGRAPHIC)

3675 II
(MORRIS)



Stereo compilation by Fairchild Aerial Surveys, Inc. for the Bureau of Reclamation. Field examination and publication by the Geological Survey as part of the Department of the Interior program for the development of the Missouri River Basin. Control by USGS, and USC&GS. Topography from aerial photographs by stereoplanigraph methods. Aerial photographs taken 1947. Field check 1950. Polyconic projection. 1927 North American datum. 10,000-foot grid based on Montana coordinate system, south zone. Dashed land lines indicate approximate locations. All mining features on this map are inactive unless otherwise indicated. Unchecked elevations are shown in brown. 1000-meter Universal Transverse Mercator grid ticks, zone 12, shown in blue.



ROAD CLASSIFICATION

Heavy-duty	4 LANE 16 LANE	Light-duty
Medium-duty	4 LANE 16 LANE	Unimproved dirt

U.S. Route State Route

USGS
Historical File
Topographic Division

VIRGINIA CITY, MONT.
N4515-W11145/15
1950
DMA 3674 IV-SERIES V794

To place on the predicted North American Datum 1983 move the projection lines 9 meters north and 63 meters east

There may be private inholdings within the boundaries of the National or State reservations shown on this map

2300
FEB - 8 1980