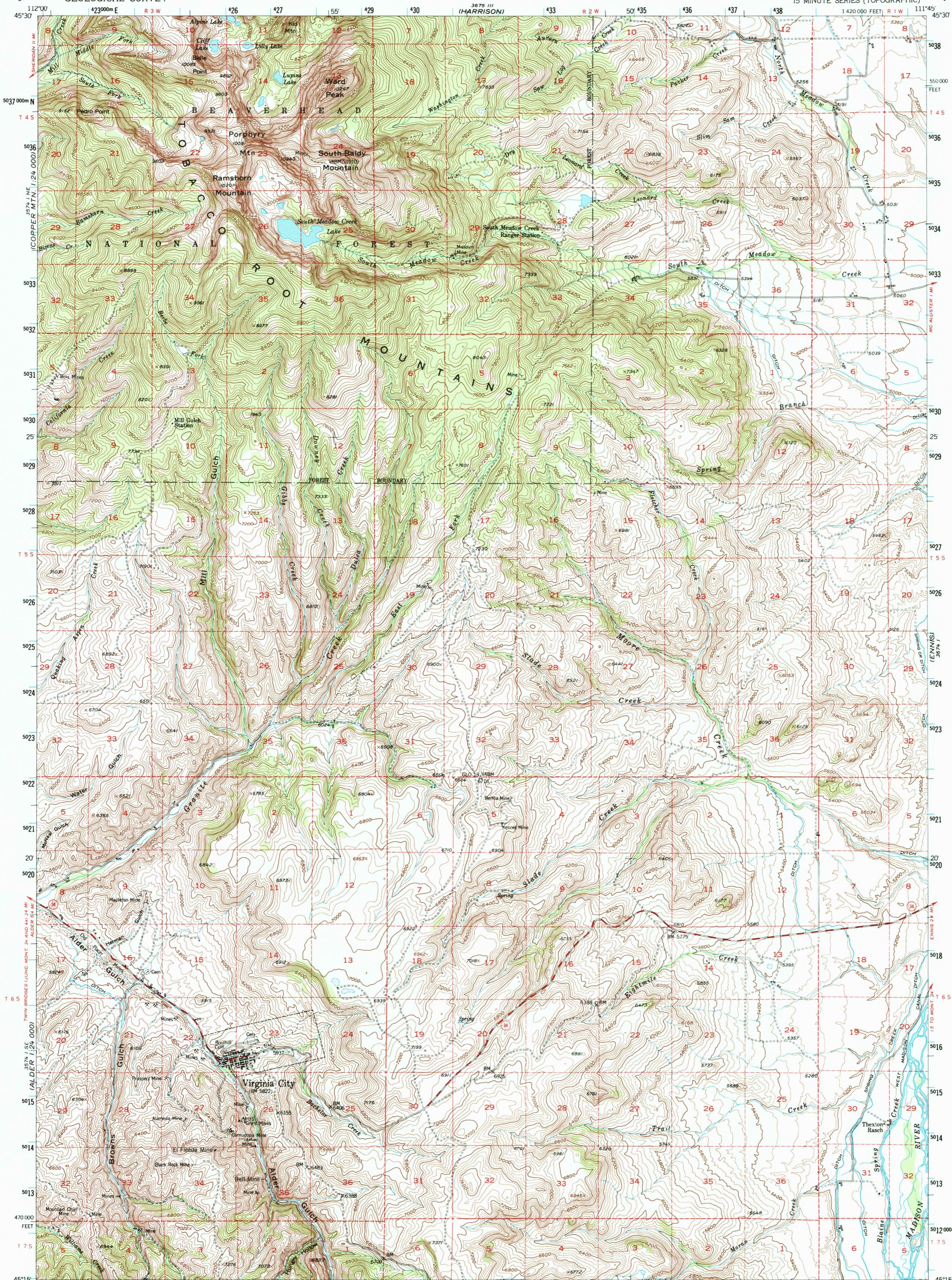


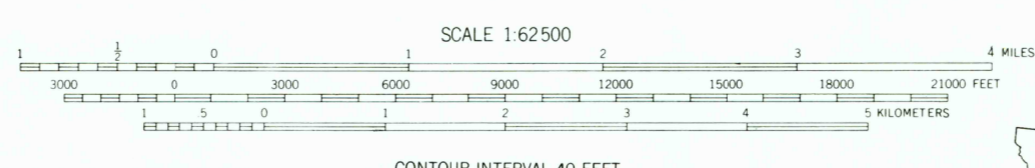
UNITED STATES
DEPARTMENT OF THE INTERIOR
GEOLOGICAL SURVEY

VIRGINIA CITY QUADRANGLE
MONTANA-MADISON CO.
15 MINUTE SERIES (TOPOGRAPHIC)



Stereo compilation by Fairchild Aerial Surveys, Inc. for the Bureau of Reclamation. Field examination and publication by the Geological Survey as part of the Department of the Interior program for the development of the Missouri River Basin. Control by USGS and USC&GS. Topography from aerial photographs by stereoplanning methods. Aerial photographs taken 1947. Field check 1950. Polyconic projection. 1927 North American Datum. 10,000-foot grid based on Montana coordinate system, south zone. Dashed land lines indicate approximate locations. All mining features on this map are inactive unless otherwise indicated. Unchecked elevations are shown in brown. 1000-meter Universal Transverse Mercator grid ticks, zone 12, shown in blue.

To place on the predicted North American Datum 1983 move the projection lines 11 meters north and 65 meters east



CONTOUR INTERVAL 40 FEET
NATIONAL GEODETIC VERTICAL DATUM OF 1929

THIS MAP COMPLIES WITH NATIONAL MAP ACCURACY STANDARDS FOR SALE BY U.S. GEOLOGICAL SURVEY, DENVER, COLORADO 80225, OR RESTON, VIRGINIA 22092. A FOLDER DESCRIBING TOPOGRAPHIC MAPS AND SYMBOLS IS AVAILABLE ON REQUEST.



QUADRANGLE LOCATION

ROAD CLASSIFICATION

Heavy duty	LANE 6 LANE	Light duty
Medium duty	LANE 6 LANE	Unimproved dirt
U.S. Route		State Route

VIRGINIA CITY, MONT.
45111-C7-TF-062
1950
DMA 3674 IV--SERIES V794

There may be private inholdings within the boundaries of the National or State reservations shown on this map