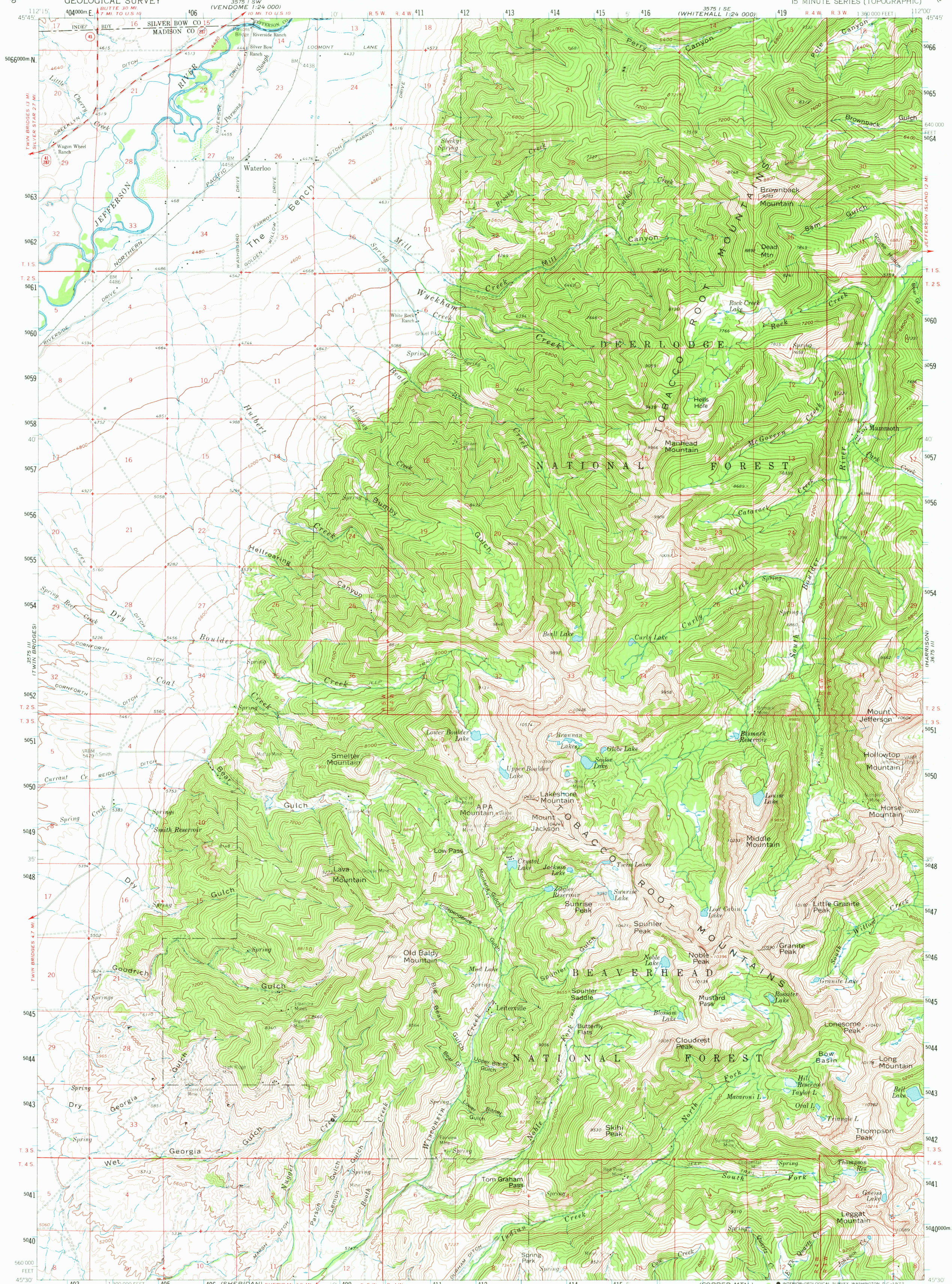
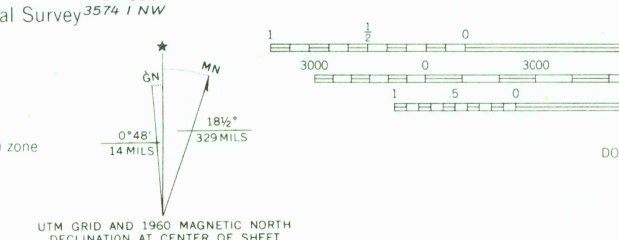


UNITED STATES
DEPARTMENT OF THE INTERIOR
GEOLOGICAL SURVEY

WATERLOO QUADRANGLE
MONTANA
15 MINUTE SERIES (TOPOGRAPHIC)



Mapped, edited, and published by the Geological Survey
Control by USGS and USC&GS
Topography by photogrammetric methods from aerial photographs taken 1956. Field checked 1960
Polyconic projection. 1927 North American datum. 10,000-foot grid based on Montana coordinate system, south zone. 1000-meter Universal Transverse Mercator grid ticks, zone 12, shown in blue.
Where omitted, land lines have not been established or are not shown because of insufficient data.



FOR SALE BY U. S. GEOLOGICAL SURVEY, DENVER, COLORADO 80225 OR WASHINGTON, D. C. 20242
A FOLDER DESCRIBING TOPOGRAPHIC MAPS AND SYMBOLS IS AVAILABLE ON REQUEST



USGS HISTORICAL FILE TOPOGRAPHIC DIVISION
WATERLOO, MONT.
N4530-W11200/15
1960
AMS 3575 II-SERIES V794

3405
JAN 26 1972