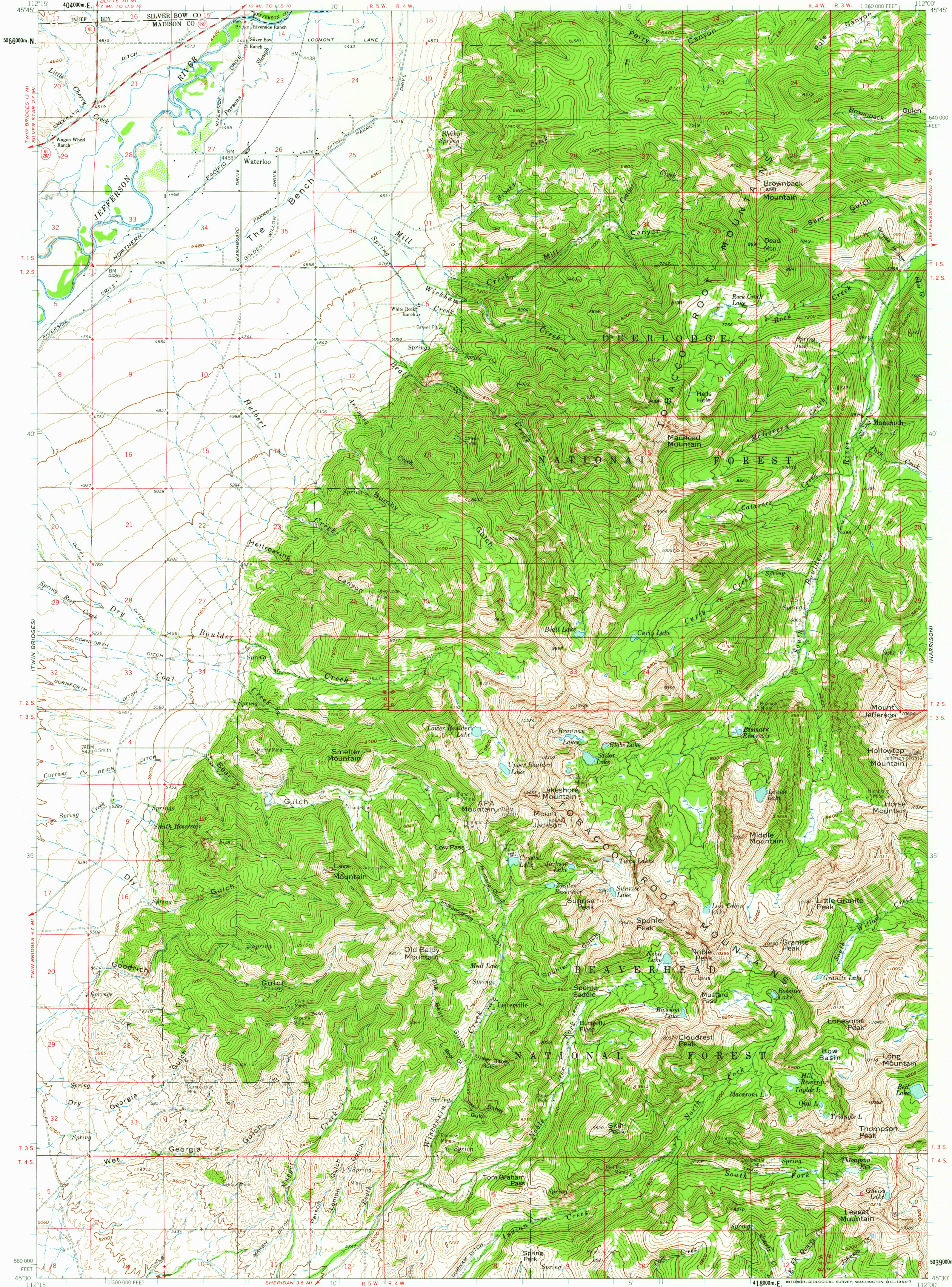
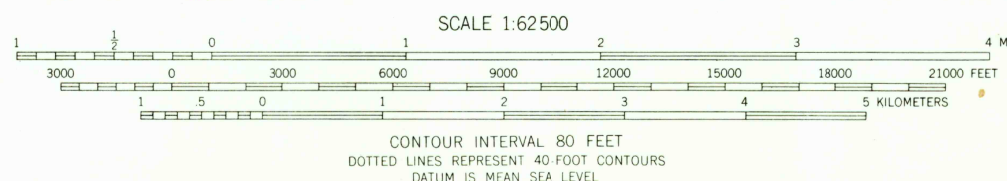
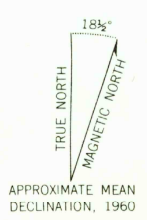


JEFFERSON ISLAND



Mapped, edited, and published by the Geological Survey
Control by USGS and USC&GS
Topography by photogrammetric methods from aerial photographs taken 1956. Field checked 1960
Polyconic projection. 1927 North American datum
10,000-foot grid based on Montana coordinate system, south zone
1000 meter Universal Transverse Mercator grid ticks, zone 12, shown in blue
Where omitted, land lines have not been established or are not shown because of insufficient data



WATERLOO, MONT.
N4530-W11200/15

THIS MAP COMPLIES WITH NATIONAL MAP ACCURACY STANDARDS
FOR SALE BY U.S. GEOLOGICAL SURVEY, DENVER OR WASHINGTON 25, D.C.
A FOLDER DESCRIBING TOPOGRAPHIC MAPS AND SYMBOLS IS AVAILABLE ON REQUEST

1960

2655

MAR 17 1964

USGS
Historical File
Topographic Division