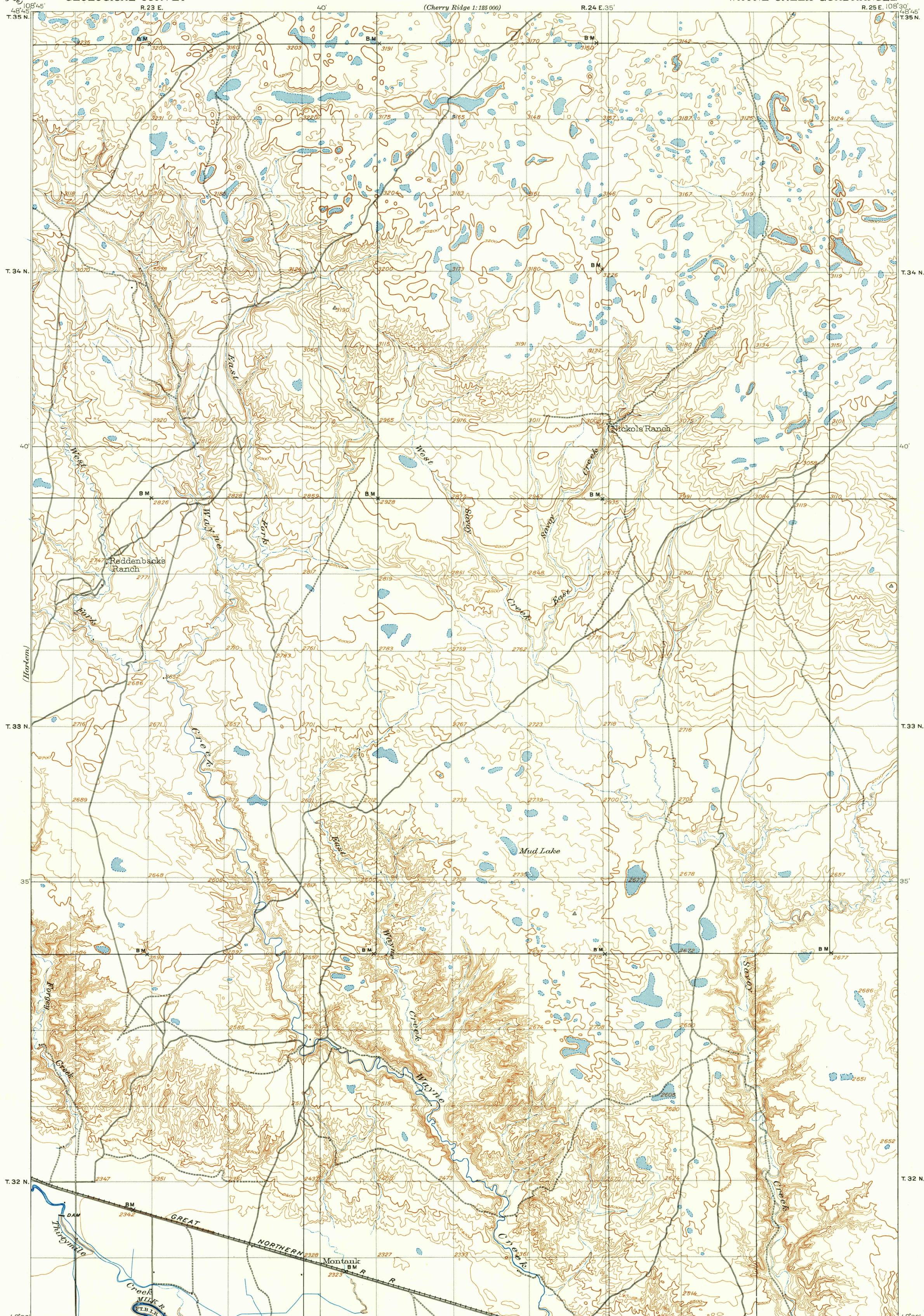


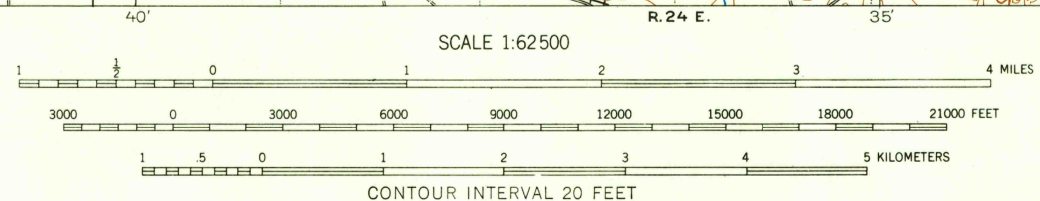
Cherry Ridge
1:125,000

UNITED STATES
DEPARTMENT OF THE INTERIOR
GEOLOGICAL SURVEY

MONTANA
(BLAINE COUNTY)
WAYNE CREEK QUADRANGLE



E. M. Douglas, Geographer
H. L. Baldwin, Jr., Topographer in charge
Topography by H. H. Hodgson, J. E. Blackburn,
Fred. McLaughlin, and E. R. Bartlett.
Triangulation by Pearson Chapman.
Surveyed in 1903.



Interior—Geological Survey, Washington, D. C., 1929. To place on 1927 North American datum move projection lines 50.5 feet north and 75 feet west.

DIAGRAM OF TOWNSHIP

6	5	4	3	2	1
7	8	9	10	11	12
13	14	15	16	17	18
19	20	21	22	23	24
25	26	27	28	29	30
31	32	33	34	35	36

WAYNE CREEK, MONT.
N 4830—W 10830/15

1903

FOR SALE BY U. S. GEOLOGICAL SURVEY, DENVER 2, COLORADO OR WASHINGTON 25, D. C.
A FOLDER DESCRIBING TOPOGRAPHIC MAPS AND SYMBOLS IS AVAILABLE ON REQUEST

USGS
Historical File
Topographic Division

USGS
Historical File
Topographic Division