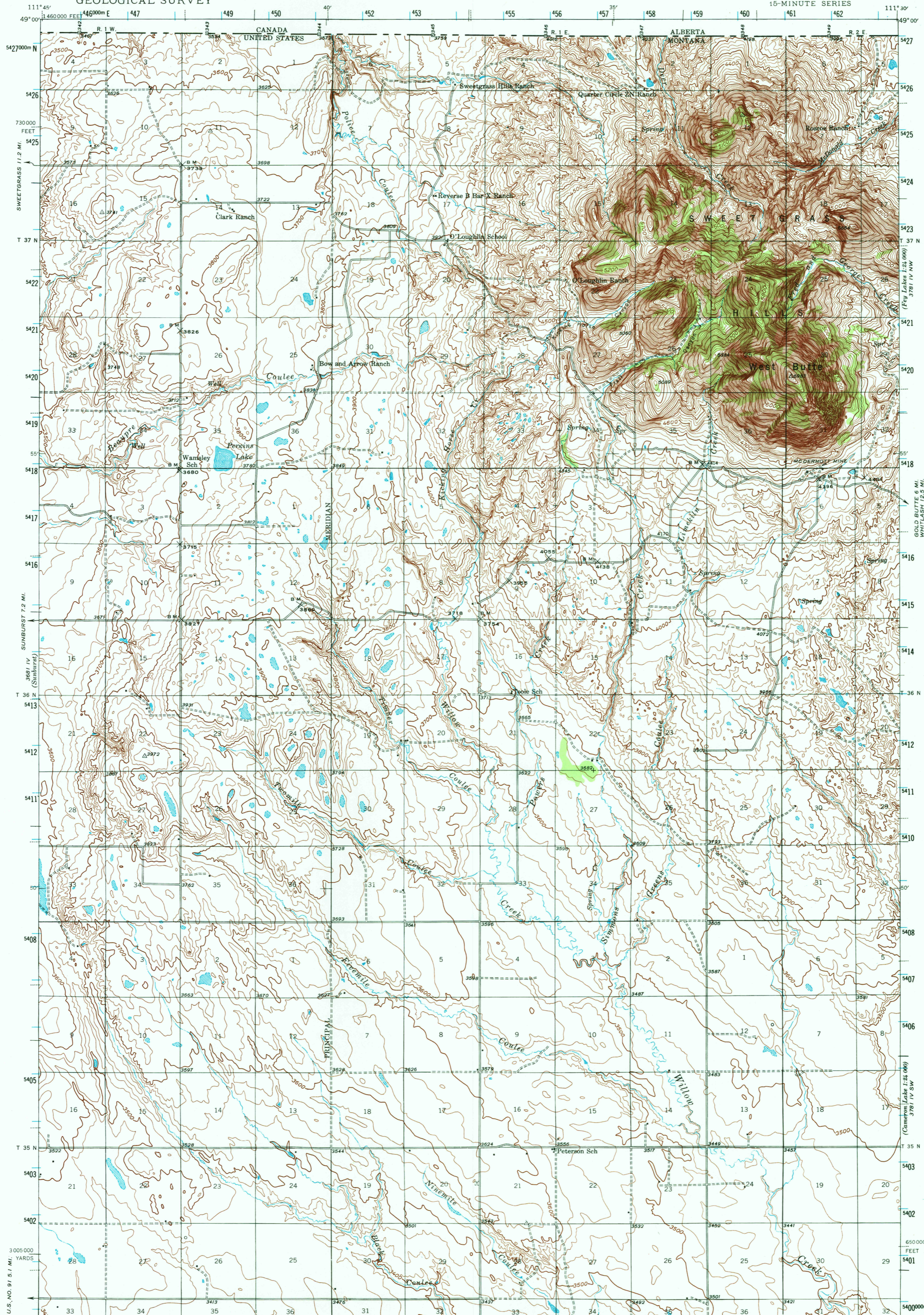
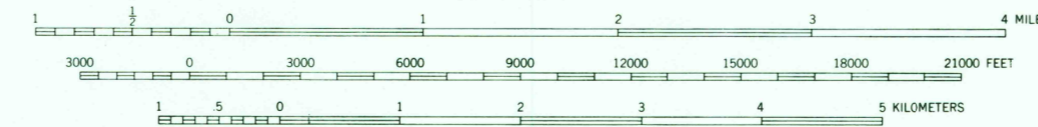
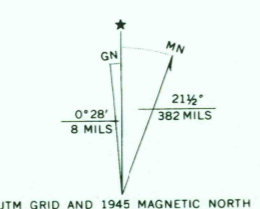


UNITED STATES
DEPARTMENT OF THE INTERIOR
GEOLOGICAL SURVEY

MONTANA
(TOOLE COUNTY)
WEST BUTTE QUADRANGLE
15-MINUTE SERIES



Map by the Geological Survey
1944-1945



Antelope Coulee
3681 II
SCALE 1:62500
POLYCONIC PROJECTION. 1927 NORTH AMERICAN DATUM
5000 YARD GRID BASED ON U. S. ZONE SYSTEM, F
10000 FOOT GRID BASED ON MONTANA (NORTH)
RECTANGULAR COORDINATE SYSTEM
1000-METER UNIVERSAL TRANSVERSE MERCATOR GRID TICKS,
ZONE 12, SHOWN IN BLUE

WEST BUTTE, MONT.
N4845-W11130/15
1945
DMA 3681 I-SERIES V794

To place on the predicted North American Datum 1983 move
the projection lines 7 meters north and 61 meters east

THIS MAP COMPLIES WITH NATIONAL MAP ACCURACY STANDARDS
FOR SALE BY U. S. GEOLOGICAL SURVEY, DENVER, COLORADO 80225, OR RESTON, VIRGINIA 22092
A FOLDER DESCRIBING TOPOGRAPHIC MAPS AND SYMBOLS IS AVAILABLE ON REQUEST

ROAD CLASSIFICATION
Light duty ————— Unimproved dirt - - - - -
1945

JUL 20 1982
RETURN TO:
USGS NMD HISTORICAL MAP ARCHIVES
1000