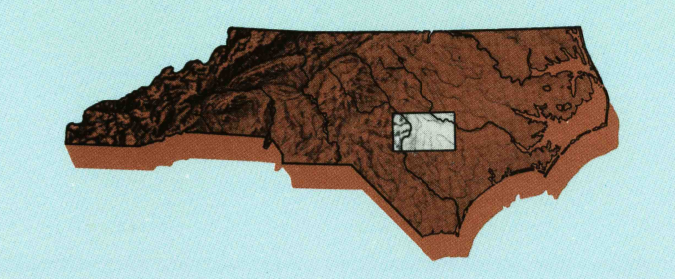


FAYETTEVILLE, NORTH CAROLINA

30 X 60 MINUTE SERIES (PLANIMETRIC)

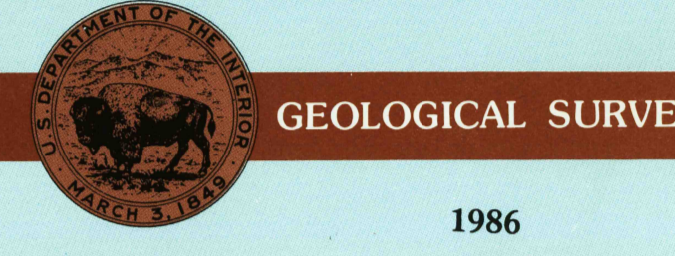
Fayetteville NORTH CAROLINA

1:100 000-scale planimetric map



30 X 60 MINUTE QUADRANGLE SHOWING

- Elevations in meters
- Highways, roads and other manmade structures
- Water features
- Woodland areas
- Geographic names



Produced by the United States Geological Survey  
 Compiled from USGS 1:24 000-scale topographic maps dated 1956-1986. Planimetry revised from aerial photographs taken 1983 and other source data. Revised information not field checked. Map edited 1986.  
 Projection and 10 000-meter grid, zone 17, Universal Transverse Mercator  
 25 000-foot grid ticks based on North Carolina coordinate system 1927 North American Datum  
 To place on the predicted North American Datum 1983, move the projection lines 12 meters south and 24 meters west.  
 There may be private inholdings within the boundaries of the National or State reservations shown on this map.

NATIONAL GEODETIC VERTICAL DATUM OF 1929 ELEVATIONS SHOWN TO THE NEAREST METER

THIS MAP COMPLIES WITH NATIONAL MAP ACCURACY STANDARDS

CONVERSION TABLE		DECLINATION DIAGRAM	ADJOINING MAPS
Meters	Feet		1 2 3
2	6.5617		4 5 6
4	13.1234		7 8
6	19.6851		10 11 12
8	26.2468		13 14 15
10	32.8085		16 17 18
12	39.3702		19 20 21
14	45.9319		22 23 24
16	52.4936		25 26 27
18	59.0553		28 29 30

To convert meters to feet multiply by 3.2808  
 To convert feet to meters multiply by 0.3048

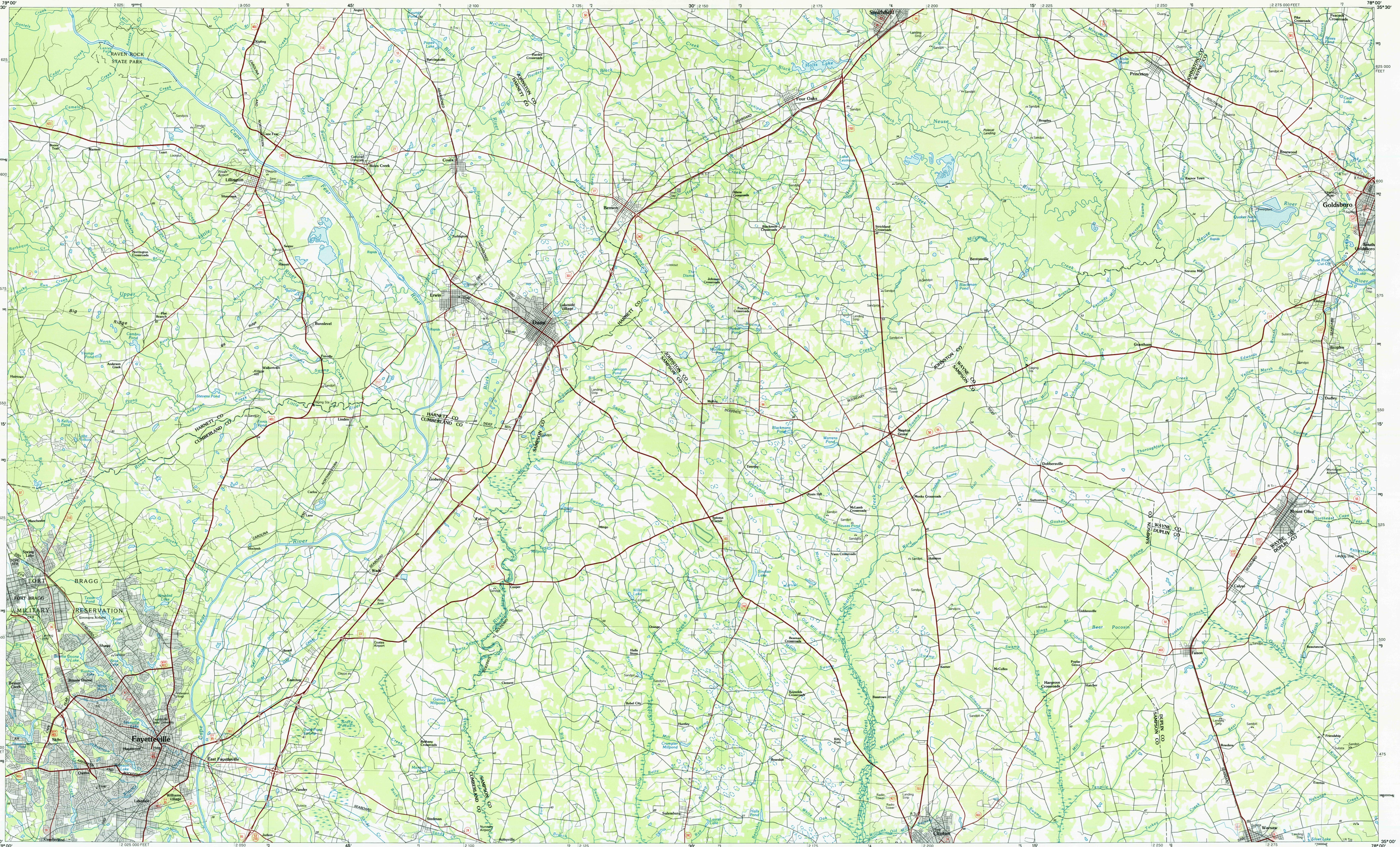
UTM grid convergence 60N and 10E magnetic declination (MN) at center of map  
 Diagram is approximate

FOR SALE BY U.S. GEOLOGICAL SURVEY RESTON, VIRGINIA 22092

Topographic Map Symbols

- Primary highway, hard surface
- Secondary highway, hard surface
- Light duty road, gravel street, hard or improved surface
- Other road or street; trail
- Route marker: Interstate, U.S., State
- Railroad: standard gage, narrow gage
- Bridge: overpass, underpass
- Tunnel: road, railroad
- Built up area, locality, elevation
- Airport: landing field, landing strip
- National boundary
- State boundary
- County boundary
- National or State reservation boundary
- Land grant boundary
- U.S. public lands survey: range, township, section
- Range, township; section line: protruded
- Power transmission line: pipeline
- Dam; dam with lock
- Cemetery: building
- Windmill; water well; spring
- Mine shaft; adit or cave; mine, quarry, gravel pit
- Campground; picnic area; U.S. location monument
- Ruin; old dwelling
- Distorted surface: strip mine, lava, sand
- Contours: index, intermediate, supplementary
- Barometric contour: index, intermediate
- Stream, lake: perennial, intermittent
- Rapids, large and small; falls, large and small
- Area to be submerged; marsh, swamp
- Land subject to controlled inundation; woodland
- Scrub; meadow
- Orchard; vineyard

A pamphlet describing topographic maps is available on request



USGS NMD HISTORICAL MAP SEP 12 1986 REC'D FILE COPY